

**COMPLETE WOOD COMPONENT & TRUSS MANUFACTURER INCLUDING  
MACHINERY, TRUCKS & SUPPORT EQUIPMENT**

# PUBLIC AUCTION



**NEW  
2006**

Overall View 16' X 120' Pacific Automation Model 16 RT Roof Gantry Press and Table System

**Featuring:** 16' X 120' Pacific Automation 16RT Roof Truss Line (2006), 16' X 110' Clark Ind. Tri-Axis Truss Press (1999), 8' X 40' Pacific Automation Auto 8 Truss Press (1998), Clark HVS-1V-16 Stacker (2007), Alpine 276N CNC Component Saw (2006), Koskovich Auto-Omni CNC Component Saw (1998), Various Delivery Conveyors, (5) Roll Off, Tilt & Stretch Trailers, (4) Semi Tractors By Mack & International (New As 2001), Pick-Up, Flat Bed & Box Trucks (New As 2001), (3) Rough Terrain Lift Trucks (New As 2005), Genie Boom Lift, Ford Backhoe, Ford Tractor, Air Compressors, Misc. Machinery, Large Quantity Late Model Shop, Support & Office Equipment

**Ordered Sold by Receiver, Leonard Z. Eppel, Financial Resource Associates, Inc., Common Pleas Court of Darke County, Ohio, Case No. 09CV00570 Premises Formerly of**

## TIMMERMAN TRUSS, INC.

5763 Jaysville – St. John Road  
Greenville, Ohio 45331  
40 Miles Northwest of Dayton, Ohio



**NEW  
2006**

Alpine Model 276N CNC Linear Component Saw

**SALE DATE:  
Tuesday,  
September 21st  
Starting at 10:00 AM**

**INSPECTION:  
Monday, Sept. 20th  
From 10:00 AM to 4:00 PM**

[www.cia-auction.com](http://www.cia-auction.com)

**Features:**

- Upcoming Sale Information
- Liquidation & Equipment Section
- Email Auction Notification
- Recent Auction Results
- Lot Catalog Listings
- Photo Galleries
- Downloadable Forms
- Complete Terms of Sale
- Staff Profiles
- Reference Information



Partial View (3 of 5) Mack and International Semi Tractors



**NEW AS  
2005**

Overall View (3) Case Rough Terrain Lift Trucks to 8,000 Lb.



**NEW  
2006**

Overall View 16' X 12' Roof Gantry System Including (2) Presses, Table and Finish Roller

SALE UNDER THE MANAGEMENT OF



**Cincinnati Industrial Auctioneers Inc.**

2020 DUNLAP ST., CINCINNATI, OHIO 45214 PHONE (513) 241-9701 / FAX (513) 241-6760  
INTERNET: [cia-auction.com](http://cia-auction.com) for printable brochures, catalog, terms and proxy-bidding





**NEW 2006**

Pacific Automation Model 16/Finish Roll Auto Roll Finish Roller



**NEW 2006**

(2) Pacific Automation Model 16 RT Roof Gantry Presses



**NEW 2006**

(2) Pacific Automation Model 16 RT Roof Gantry Presses



**NEW 1998**

50 Ton Pacific Automation Model Auto-8 Roof and Floor Truss Press



**NEW 1999**

58 Ton Clark Industries Model Tri-Axis-16 Hydraulic Truss Press



24' Diameter Expediter Motorized Supply Carousel

### ROOF GANTRY SYSTEM

(2) Pacific Automation Model 16 RT Roof Gantry Presses; S/N PA975E & PA976E, Pacific Controls, 24" Dia. Roller, 1-5/8" Fixed Pressing Height, 192" Pressing Width, 120 FPM Traveling Speed, 7-1/2 HP Drive Motor, (2) Dell Dimension 3100 PC Systems (New 2006) **SEE PHOTO**

> 16' X 120' Roof Gantry Press Table; (13) Wizard PDS Automated Perimeter Definition Systems, Built In Pneumatic Side Truss Ejector (New 2006)

Pacific Automation Model 16/Finish Roll Auto Roll Finish Roller; S/N RPA972, Pneumatic Truss Side Truss Ejectors, 24" Dia. Roller, (13) 1/3 HP Roller Conveyors, 3-1/2" Max Pressing Height, 192" Pressing Width, 120 FPM Speed (New 2006) **SEE PHOTO**

### CNC COMPONENT SAWS

Alpine Model 276N CNC Linear Component Saw; S/N 276N06057-000, Aaeon CNC Control, Integrated Computer Control, 20" Saw Blades, 18" X-Axis, 7.5 HP Motor, 18" X 20" In-Feed Conveyor, 18" X 15" Out-Feed Conveyor, Zebra 105 SL Label Printer (New 2006) **SEE PHOTO**

Koskovich Model Auto-Omni CNC Component Saw; S/N A098126, Engineering Services Control, Integrated Computer Control, (3) 20" & (1) 12" Saw Blade, 10' Clamping Conveyor, 20' Long X 16' Wide Motorized Chain Feed Conveyor, Waste Conveyor, Jet Mask Model 1104 Ink Jet Printer (New 1998) **SEE PHOTO**

### TRUSS PRESSES

58 Ton Clark Industries Model Tri-Axis-16 Hydraulic Truss Press; S/N T99401612111H, Clark Control, 18" X 16" Table, 16" X 16" Steel Platen, Ram Moveable Between Housings, 16" X 110" Drilled & Tapped Steel Layout Table (New 1999) **SEE PHOTO**

50 Ton Pacific Automation Model Auto-8 Roof and Floor Truss Press; S/N PA357, Pacific Control, 8' X 45' Drilled & Tapped Steel Table, 2' X 8' Platen, 5-3/4" Max Pressing Height, 5' Per Second Travel Speed (New 1998) **SEE PHOTO**

### TRUSS STACKERS

(4) Clark Industries Model HVS-IV-16 Truss Stackers; S/N 30686-1, 2, 3 & 4, Autec Type R202 Model 15LD Radio Remote Control, 16' Long (14) Motorized Rollers, (12) No Motorized Rollers (New 2007) **SEE PHOTO**

### MATERIAL CONVEYOR

24' Diameter Expediter Motorized Supply Carousel **SEE PHOTO**

### ROUGH TERRAIN LIFT TRUCKS

2005 - 8,000 Lb Case Model 588G Pneumatic Tire Rough Terrain Lift Truck; S/N JYG0293282, 1,616 Hours, 2-Stage Mast, 22' Lift Height, 48" Forks Side Shift

1996 - 6,000 Lb Case Model 586E Construction King Pneumatic Tire Rough Terrain Lift Truck; S/N JYG0250800, 8,880 Hours, 2-Stage Mast, 21-1/2' Lift Height, 48" Forks, Side Shift

1993 - 6,000 Lb Case Model 586E Construction King Pneumatic Tire Rough Terrain Lift Truck; S/N JYG0129704, 8,486 Hours, 2-Stage Mast, 21-1/2' Lift Height, 48" Forks, Side Shift

### BACKHOE / TRACTOR / MANLIFT

1980 Ford Model 555 Rubber Tire Diesel Loader Backhoe; S/N C591849, 4,168 Hours, Two-Wheel Drive, Out Riggers, Pneumatic Tires, 7' Front Bucket, 17" Backhoe Bucket, Open Cab **SEE PHOTO**

Ford Model 5000 Diesel Farm Tractor; S/N 51014C1699897C28, 6,453 Hours, Two-Wheel Drive, Attachments Maybe Sold Separate Including: 7' PTO Drive Rear Mount Mower, 8' Rear Mount Box Scrape

1998 Genie Model Z-60/34 Rough Terrain Dual Fuel Boom Type Manlift; S/N 1107, Dual Fuel, LP & Gasoline Engine, Pneumatic Tires, Four-Wheel Drive, 60' Max Platform Height, 500 Lb Max Load **SEE PHOTO**

### AIR COMPRESSOR / DRYER SYSTEM

25 HP Kaeser Model AS25T Combination Air Compressor, Dryer & Holding Tank; S/N 1215, 75 Gallon Horizontal Tank, 2,494 Hours, Late Model **SEE PHOTO**

### MISC. MACHINERY

Thermal Arc Power CV TA 10/270H AC/DC CC/CV Welder Generator System; S/N Y9013SA191707C, Three Phase

250 Amp Miller Millermatic 250 Built In Wire Feed Welder; S/N KK175892

10" X 12" Jet Model HVBS-7M Horizontal Band Saw; S/N 212061  
8 HP Emglo Model MGU Portable Gas Power Air Compressor; S/N 3092200158

Other Late Model Misc. Machinery Consisting of; 4,000 Lb National Tool Model H-4000 Engine Hoist, Rigid Model 300-T2 Pipe Threader; S/N ED920160105, 16" Dewalt Industrial / Construction Table Saw, Jet Model JDP-20MF Drill Press; S/N 4030449, 30 Ton National Tool Model P-30 H-Frame Press; S/N N/A, 10" Jet Double End Bench Grinder; S/N 0100173, 6" Craftsman Double End Bench Grinder; S/N 70580032

### SEMI TRACTORS

2001 Mack Model CH613 Max Cruise Semi Tractor; Vin No. 1M1AA13Y51W136308, 346,359 Miles, Eaton Fuller 10-Speed Manual Transmission, Diesel Engine **SEE PHOTO**

1999 International Model 8100-6X4 Semi Tractor; Vin No. 1HSHCHR6XH652448, 255,883 Miles, Eaton Fuller 10-Speed Manual Transmission, Diesel Engine

## IMPORTANT AUCTION NOTICE

THIS AUCTION WILL BE CONDUCTED LIVE ONSITE ONLY  
Proxy Bids Will Be Accepted with Proper Deposit  
MORE PICTURES AVAILABLE ON WEBSITE



**NEW 2007**

(4) Clark Industries Model HVS-IV-16 Truss Stackers



25 HP Kaeser Model AS25T Combination Air Compressor, Dryer & Holding Tank



Partial View Large Quantity Late Model Hand and Power Tools





**NEW  
2006**

Alpine Model 276N CNC Linear Component Saw



**NEW  
1998**

Koskovich Model Auto-Omni CNC Component Saw



2001 Mack Model CH613 Max Cruise Semi Tractor

**1994 Mack Model CH613 Semi Tractor;** Vin No. 1M2AA13YORW030775, Missing Fifth Wheel, 608,254 Miles, Eaton Fuller 10-Speed Manual Transmission, 13' Diamond Van Body Box w/ Pull Out Ramp, 150 Gallon Fuel Tank w/ Tuthill Fillrite Electric Pump

**1994 International Model 5 Series 8300-6X4 Semi Tractor;** Vin No. 1HSHKHAR8RH547631, 512,468 Miles, Eaton Fuller 10-Speed Manual Transmission, Diesel Engine

**1988 International S2200 Semi Tractor;** Vin No. 1HSZBGUR5JH535158, 429,769 Miles, Manual Transmission, Diesel Engine

**TRAILERS - ALL TYPES**

**1996 - 48' Trail-Eze Model DLX-30-TC-48 Hydraulic Tilt Deck Trailer;** Vin No. 1DA72C79TP012128, 74,220 GVWR, 36' Rear Deck, 10' Upper Deck w/ Winch **SEE PHOTO**

**1996 - 48' Transcraft Model TL-2000 Super Beam Flat Bed Trailer;** Vin ITT-F4820-2-T1051397, 80,000 GVWR

**2000 - 48' Alloy Custom Products Model AE-70 Extending Bed Tilting Truss Trailer;** S/N 1A9RG4927YD503077, 68,000 GVWR, Max Extension 70' **SEE PHOTO**

**1997 - 48' Wabash ASI Extending Bed Tilting Truss Trailer;** Vin No. 5AAMF87023V1101406, Max Extension to 70'

**1973 Russ Model Dump-O-Matic Tandem Axle Side Dump Trailer;** S/N 83RTY1564

**OTHER TRUCKS**

**1990 International 8100-6X4 Tilting Flat Bed Truck;** Vin No. 1HTHCGER7LH247549, 205,634 Miles, 32' Roller Bed, Manual Transmission, Diesel Engine

**1985 GMC Vandura 3500 14' Van Body Truck;** Vin No. 2GDHG31J2F4507321, 12,773 Miles Over, 14' Cargo Master Box, Automatic Transmission

**1983 International Model 1954 Dump Truck;** Vin No. 1HTAA1955DHA31859, 452,870 Miles, Manual Transmission, 10' Dump Bed, Diesel Engine

**SUV'S**

**2005 GMC Envoy SLT SUV;** Vin 1GKDT13S552317462, 102,087 Miles, 4.2 L Vortec 4200 V-6 Gasoline Engine, Automatic Transmission, Leather Interior, Tow Package

**1999 Chevrolet Tahoe LT SUV;** Vin No. 3GNEK18R8XG144594, Vortec V-6 Gasoline Engine, Automatic Transmission, Leather Interior, 131,056 Miles, Tow Package, Running Boards

**PICK-UP TRUCKS**

**2004 GMC Sierra Two Door Pick-Up Truck;** Vin No. 1GTCE14X84Z295540, 111,709 Miles, Auto 4.3 L V-6

**2001 GMC Sierra 1500 Pick-Up Truck;** Vin No. 1GTCE14W21Z194559 w/ 233,473 Miles, 4.3L Vortec V-6 Gasoline Engine, Automatic Transmission, Delta Champion Bed Box, Running Boards, Tow Package

**1999 GMC Sierra 1500 Pick-Up Truck;** Vin No. 1GTCE14W3XE520191 w/ 313,899 Miles, 4.3L Vortec V-6 Gasoline Engine, Automatic Transmission, Delta Champion Bed Box, Running Boards, Tow Package

**1997 GMC Sierra 1500 SL Pick-Up Truck;** Vin No. 1GTCE14W5VZ522983, 341,718 Miles, 4.3 L Vortec V-6 Gasoline Engine, Automatic Transmission, Delta Champion Bed Box, Running Boards, Tow Package

**ROLL OFF CONTAINERS**

**(5) 40 Yard Galfab Steel Roll-Off Containers;** S/N 5632, 5635, 5634, 6483, 6485 **SEE PHOTO**

**SHOP & SUPPORT EQUIPMENT**

**Large Quantity Late Model Shop & Support Equipment Consisting of;** (5) 113"W X 48"D X 190"H Cantilever Racks, (1) 101"W X 48"D X 190"H Cantilever Rack, (21) 52"W X 60"L Steel Material Carts, (7) 8"W X Up To 40' Long Truss Carts, (4) Self Dumping Dump Hoppers, (2) 2,500 Lb Pallet Jacks, (6) Banding Carts, (5) Hose Reels, Levels, (9) Ladders to 24', (6) Oversize Load Signs, Saw Horses, Excess Material Including Wood & Steel, Large Quantity of Truss Staples, Connections & Hangers, (5) 40 Yard Dumpsters, Stihl Model MS440 Chain Saw, (5) Circular Saws, 12" Dewalt DW718 Compound Mitre Saw, (7) Bostich Pneumatic Staple Guns, 7,500 Lb Hydraulic Jack, (2) Pneumatic Impact Wrenches, Makita Model 2414 Portable Cut-Off Saw, Vises, Tool Boxes, Hand Tools, Clamps, Dewalt Model DW845 Heavy Duty Polisher, Dewalt D25650 Rotary Hammer and Many Other Related Items

**OFFICE EQUIPMENT**

**Late Model Office Furniture Consisting of;** Reception Desk, Credenzas, Desks, Chairs, Recliner Chair, Computer Desks, Metal Shelving Units, Folding Tables & Chairs, 2, 4 & 5 Drawer Filing Cabinets, Fire King Fireproof 2-Drawer Filing Cabinets And Many Other Related Items

**Late Model Office Equipment Consisting of;** HP Laser Jet Printers, Sharp ARC-260M Color Copier, HP Designjet 450c Wide Format Printer, Ricoh FW760 Large Size Copier, Sharp FO-4700 Fax Machine, (4) Dell Dimension XP587231 PCs, (2) Dell Dimension 8300 PCs w/ Flat Screen Monitors, Dell Dimension 9150 PC, Dell Dimension 8400 PC w/ Flatscreen Monitor, Dell Poweredge 600 SC Server, Cisco PIX501 Fire-Wall, Cisco SR224 24-Port Switch, (2) Vacuum Cleaners, (5) Microwave Ovens, (2) Refrigerators, (2) Televisions And Many Other Related Items



2000 - 48' Alloy Custom Products Model AE-70 Extending Bed Tilting Truss Trailer



1996 - 48' Trail-Eze Model DLX-30-TC-48 Roll Back Trailer



Partial View Late Model Passenger Vehicles Including Pick-Ups and SUVs

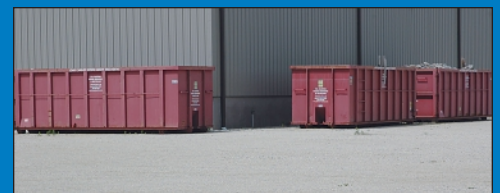
**IMPORTANT AUCTION NOTICE**  
**THIS AUCTION WILL BE CONDUCTED LIVE ONSITE ONLY**  
 Proxy Bids Will Be Accepted with Proper Deposit  
**MORE PICTURES AVAILABLE ON WEBSITE**



1980 Ford Model 555 Rubber Tire Diesel Loader Backhoe



1998 Genie Model Z-60/34 Rough Terrain Dual Fuel Boom Type Manlift



(5) 40 Yard Galfab Steel Roll-Off Containers



# PUBLIC AUCTION

Ordered Sold by Receiver, Leonard Z. Eppel, Financial Resource Associates, Inc., Common Pleas Court of Darke County, Ohio, Case No. 09CV00570 Premises Formerly of

## TIMMERMAN TRUSS, INC.

5763 Jaysville – St. John Road  
Greenville, Ohio 45331  
40 Miles Northwest of Dayton, Ohio

**SALE DATE:**  
**Tuesday, Sept. 21st**  
**STARTING: 10:00 AM**

**INSPECTION:**  
Monday, September 20th  
10:00 AM to 4:00 PM



### Cincinnati Industrial Auctioneers Inc.

2020 DUNLAP ST., CINCINNATI, OHIO 45214  
PHONE (513) 241-9701 / FAX (513) 241-6760  
INTERNET: [cia-auction.com](http://cia-auction.com)



Roof Gantry System (2006)



Alpine CNC Linear Saw (2006)



Large Vehicle Fleet



(3) Case Lift Trucks (To 2005)

FIRST CLASS MAIL!

PRE-SORT  
FIRST CLASS  
U.S. POSTAGE  
**PAID**  
CINCINNATI, OHIO  
PERMIT NO. 3593

### Important Mail

TO BE DIRECTED TO THE ATTENTION  
OF EXECUTIVE PERSONNEL



**TUESDAY, SEPTEMBER 21ST**

# PUBLIC AUCTION

Ordered Sold by Receiver, Leonard Z. Eppel, Financial Resource Associates, Inc., Common Pleas Court of Darke County, Ohio, Case No. 09CV00570 Premises Formerly of

## TIMMERMAN TRUSS, INC.

5763 Jaysville – St. John Road  
Greenville, Ohio 45331  
40 Miles Northwest of Dayton, Ohio

### IMPORTANT NOTICE:

Although information has been obtained from sources deemed reliable, the auctioneer makes no warranty or guarantee, expressed or implied, as to the accuracy of the information herein contained. It is for this reason that buyers should avail themselves of the opportunity to make inspection prior to the sale. This brochure is intended to provide general information of the equipment being offered and is subject to errors, omissions, additions or deletions. Please check with the Auctioneer's Office for a final listing. Items offered may or may not necessarily be sold as described and/or photographed in this brochure.

MAIL BIDS ACCEPTED WITH A 25% DEPOSIT

### DIRECTIONS

From I-75 Approx. 25 Miles North of Dayton Exit at No. 82 US-36 Towards Urbana / Piqua. Proceed West on US-36 (Follow Closely as it Weaves Through Piqua) For Approx. 20 Miles until you are just East of the Greenville Town Center to Jaysville St. Johns Rd. Turn South & Proceed Approx. 1 Mile to Sale Site on Left. Watch for Auction Parking Signs & Arrows.

### AUCTIONEERS

Cincinnati Industrial Auctioneers, Inc.  
License No. 63-1983-10439

Jeffrey L. Luggen – License No. 57-1983-33789

Jerome A. Luggen – License No. 52-1983-33799

Jeffrey M. Luggen – License No. 2010-0000-26

Joseph M. Luggen – License No. 2010-0000-19

John F. Rome – License No. 57-2000-84249



### TERMS OF SALE

All equipment described herein will be sold "as is", "where is" to the highest bidder or bidders for cash in accordance with our regular terms and conditions of sale. Unless other satisfactory arrangements are made, a **25% deposit** in cash, certified or cashier's check payable to Cincinnati Industrial Auctioneers, Inc., is required on all purchases. Firm and personal checks accepted only if accompanied by a letter from your bank guaranteeing your funds. All sales are subject to state and/or local taxes unless a signed exemption form is presented at the time of purchase. **All balances are due at the conclusion of the sale.** No merchandise may be removed while the sale is in progress. **All bidders must comply with our Standard Terms of Sale**, copies of which will be available at the sale site or can be obtained from our website.

SALE UNDER THE MANAGEMENT OF

## Cincinnati Industrial Auctioneers Inc.

2020 DUNLAP ST., CINCINNATI, OHIO 45214 PHONE (513) 241-9701 / FAX (513) 241-6760  
INTERNET: [cia-auction.com](http://cia-auction.com) for printable brochures, catalog, terms and proxy-bidding

**SALE DATE**  
**Tuesday,**  
**Sept. 21st**  
**10:00 AM**

