

PUBLIC

AUCTION

Bidspotter.com
Bid In-Person or Online with Bidspotter.com

HUGE 2-DAY AUCTION

TAESL-TEXAS AERO ENGINE SERVICES LLC

2100 Eagle Parkway in Ft. Worth, Texas 76177

WEDNESDAY, AUGUST 31st
THURSDAY, SEPTEMBER 1st
STARTING AT 10AM EACH DAY

Inspection: Tues., August 29th & Wed., August 30th from 9AM-4PM

NEW AS 2006

1 OF 5



(5) SULZER METCO & HOBART TAFA Thermal Spray Metallizing Systems

1 OF 12



(12) STANLEY VIDMAR Modular Tooling Storage Systems

2014



ONLY 150 HOURS

2014 PROGRESSIVE SURFACE CNC Waterjet Stripping System

1 OF 2



(2) GIDDINGS & LEWIS 48VTC 3-Axis CNC Vertical Turning Centers

1 OF 10



(10) SCHENCK Balancers



(2,000+) Pieces Precision Inspection Tools

400+



(400+) VIDMAR Cabinets w/Large Inventory of Tooling & Parts



BUTLER NEWALL 8-Axis CNC Precision Blade Tip Grinder

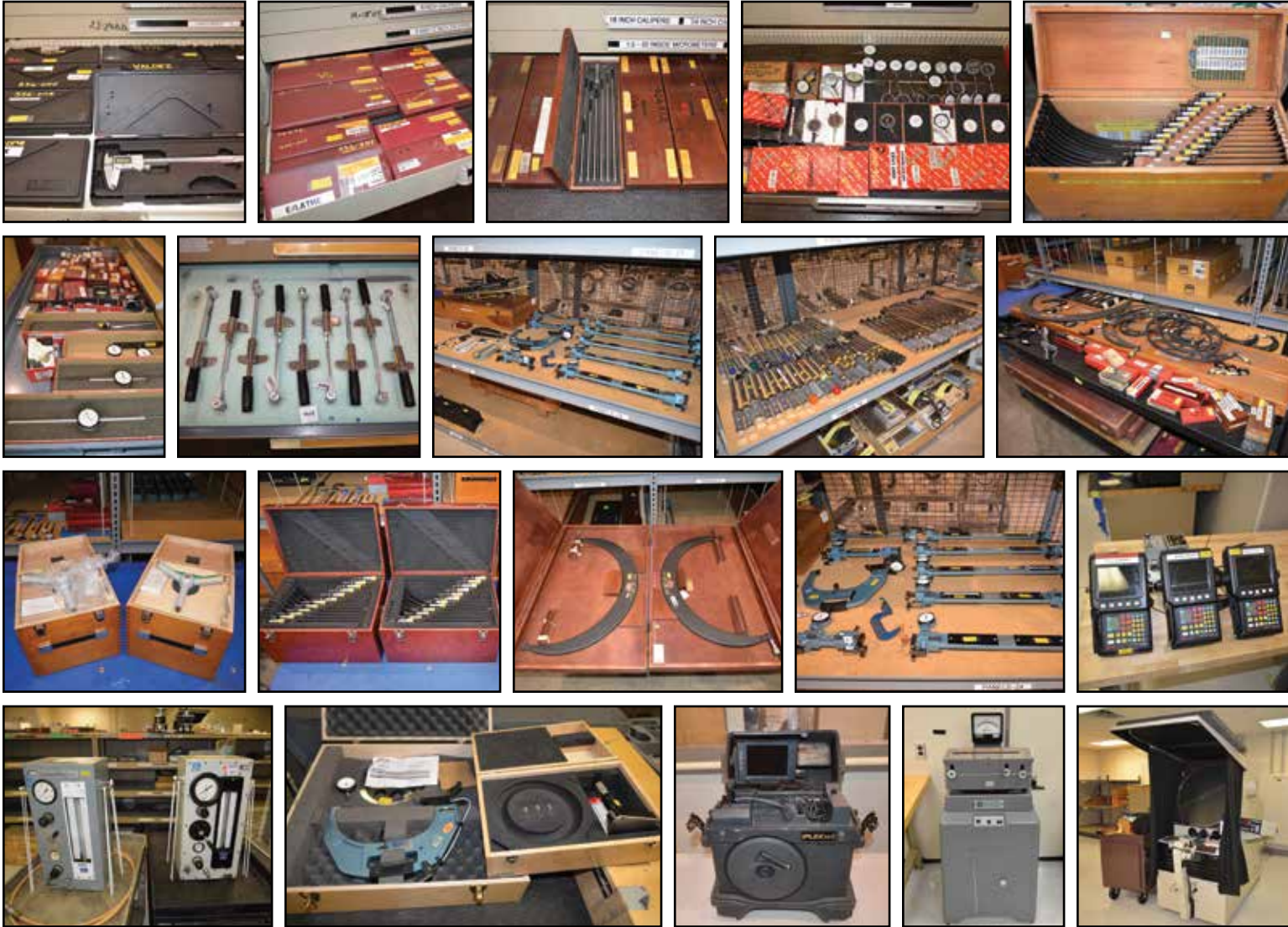
sale
conducted
by

 **MYRON BOWLING**
AUCTIONEERS, INC.
www.myronbowling.com

in
conjunction
with

 **CINCINNATI**
INDUSTRIAL
AUCTIONEERS
cia-auction.com

(2,000+) PIECES PRECISION INSPECTION TOOLS



ENGINE TOOLING & FIXTURES

(1,000+) Pcs. Tooling, Jigs & Fixtures for the Repair, Rebuild, Test, and Handling of ROLLS-ROYCE RB-211-515 & TRENT 800 Aircraft Engines: Machine Workholding Fixtures, Transport Carts, Spreader Bars, Lifting Fixtures, Test Gauges & Many Other Related Items

NON-DESTRUCTIVE TEST EQUIPMENT

2014 TIEVAL MIDAS-NDT M403T Fan Blade Scanner, S/N M0364, 40" x 72" x 24" Tank Area, Clamping Fixture
 2004 MIDAS-NDT M104 Fan Blade Scanner, S/N 060704, 48" x 24" x 24" Tank Area, Control
 Digital NDT Test Equipment: PANAMETRICS Epoch 4 Plus Units • OLYMPUS Nortec 500S Units • MAGNAFLUX Guns • KRAUTKRAMER USN S2 Units • NOVA 950 Thickness Gage • ROHMAN Ecotest B1 Eddy Current • IBRANCE Block Light & Other Related Items

INSPECTION & TEST EQUIPMENT

(2,000+) Pcs. Precision Inspection Tools: OD Mics to 60" • Calipers to 60" • Torque Wrenches • DORSEY Snap Gauges • Microscopes • Dial Bore Gauges • Height Gauges • Granite Plates to 5' x 10' x 24" • Pin Gauge Sets • Gauge Blocks • Oscilloscopes • Pressure Testers • SWEENEY Torque Heads • Much More!!

SCHERR TUMICO 30" Optical Comparator, Model 22-2600, S/N T921601, Quadra Check 2000 Control, (3) Lenses, Pendant
 SCHERR TUMICO 30" Optical Comparator, Model P2500, S/N 323, (3) Lenses
 BROWN & SHARPE 24" Micro-Hite Digital Height Gage
 DIT-MCO Portable Test Station, Model 2505.S17
 FEDERAL Electronic Gauge Setting Fixture, Model 136-3

FORKLIFTS

2003 CATERPILLAR 10,000-lb. Forklift, Model GC45K, LPG, Solid Tires, 86/181" 3-Stage Mast, Side Shift
 2011 HYSTER 10,000-lb. Forklift, Model S100FT, LPG, Solid Tires, 3-Stage Mast, Side Shift
 2010 YALE 9,000-lb. Forklift, Model GP090VX, LPG, Pneumatic Tires, 96/143" 2-Stage Mast, Side Shift, Fork Positioner
 2011 HYSTER 8,000-lb. Forklift, Model S80FT, LPG, Solid Tires, 3-Stage Mast, Side Shift
 2011 LINDE 8,000-lb. Forklift, Model H40T, LPG, Pneumatic Tires, 95/127" 2-Stage Mast, Side Shift
 TOYOTA 5,000-lb. Electric Forklift, Model 5FBCU25, S/N 65220, 3-Stage Mast, 8,200 Hours, Side Shift
 HYSTER 4,350-lb. Electric Forklift, Model E4013, S/N 6924A, 2-Stage Mast, Side Shift
 (2) CAT 4,000-lb. Electric Forklifts, Model M40D, S/N's 4WC01356 & 4WC01341, 3-Stage Mast
 (2) LINDE 3,150-lb. 3-Wheel Electric Forklifts, Model E20-AC, S/N A1X346W00072, 2-Stage Mast
 (2) KOMATSU 3-Wheel Electric Forklifts, Model FB18M-3, S/N's 24957A & 24956A, 3-Stage Mast, Side Shift, 7,700 Hours

CLARK 2,500-lb. 3-Wheel Electric Forklift, Model TM15, 3-Stage Mast, Side Shift
 CROWN 3,000-lb. Stand-Up Rider, Model 30RCTT-5, S/N 1A112440, 190" Lift Height
 (2) YALE 3,000-lb. Electric Stand-Up Lifts, 126" Lift Height
 (7) CROWN, PRESTO, BIG JOE, ROL-LIFT Electric Walk-Behind Stackers
 (5) Electric & LP Forklifts (For Parts)
 (20) Electric Battery Chargers

BOOM LIFT, SCISSOR LIFTS, CARTS & TUGS

1999 JLG 45' Articulating Boom Lift, Model 450AJ, LPG/Gas, 4-Wheel Drive, 24' Horizontal Reach, 32" x 72" Work Basket, 500-lb. Capacity
 (2) 2003 SKYJACK Scissor Lifts, Model SJIII 4832, Electric, Built-In Charger
 (5) Electric Scissor Lifts: SKYJACK 3220 • (2) SNORKEL 20-32 & 20-40 • (2) MX15 Upright Electric Scissor Lifts
 LIFT-A-LOFT Electric Manlift
 (15) EZ-GO, CUSHMAN, TAYLOR DUNN Electric Flatbed Carts
 2014 TAYLOR DUNN B0-210-36 Electric Cart, S/N 196723, 23 Hours
 (3) TAYLOR DUNN 3-Wheel Electric Carts
 (2) CAT CADDY 5W Electric Tuggers
 (3) CROWN Electric Tugs, Model TWR3540-200
 HASLAN 3,000-lb Electric Tug, Model ME-30, S/N 544, (6) Drawbar Capacity
 CLARK 3,000-lb. LP Gas Tug, Model CT-30, Drawbar
 2008 KUBOTA RTV 1100 Utility Vehicle, Cab Heat, AC, 4WD, Diesel, Bed Dump
 (5) CLUB CAR Electric Golf Carts

(10) TAYLOR DUNN & CUSHMAN Carts (For Parts)
 (12) WORKMAN / SCHWINN 3-Wheel Bicycles

FLOOR SCRUBBERS

(7) TENNANT Electric Floor Scrubbers: Model 7300, S/N 7300-2467 • Model 1480 • (2) Model 528 • Model 480EE, 1770 Hours • (2) Model 285

VIDMAR MODULAR RACK SYSTEMS

(2) STANLEY VIDMAR Stak System 28-Section Modular Tooling Storage Systems, Each Section 5'W x 4'D x 16" High, 52" Wide Shelves, 2,000-lb. Rotating Lift
 (9) STANLEY VIDMAR Stak System 14-Section Modular Tooling Storage Systems, Each Section 5'W x 4'D x 16" High Approx., 52" Wide Shelves, 2,000-lb. Rotating Lift, 8' Aisle, (7) Sections per Side
 STANLEY VIDMAR Stak System 14-Section Modular Storage System, Each Section 5'W x 4'D x 8' High, 52" Wide Shelves, Pallet Lift, 8' Aisle Way, 8' Aisle, (7) Sections per Side

AUTOMATED VERTICAL STORAGE SYSTEMS

6-Tower VLM Automated Storage & Retrieval System, 26" x 55" Trays, Controls for Each Tower, Approx. 30' x 8' x 26' High Footprint
 (2) LAUYANS VSR11 VLM Automated Storage & Retrieval Systems, S/N 94044, 102" Wide Shelves, Approx. 11' x 8' x 25' High

(1,000+) PIECES TOOLING, JIGS & FIXTURES FOR REPAIR, REBUILDING & TESTING



2014

2014 TIEVAL MIDAS-NDT M403T Fan Blade Scanner



2004

2004 MIDAS-NDT M104 Fan Blade Scanner



6-Tower VLM Automated Storage & Retrieval System



(2) STANLEY VIDMAR Stak System 28-Section Modular Tooling Storage Systems



(9) STANLEY VIDMAR Stak System 14-Section Modular Tooling Storage Systems



STANLEY VIDMAR Stak System 14-Section Modular Tooling Storage System



2014





2006



2006 SULZER METCO Thermal Spray Metallizing System



1 OF 2



(2) SULZER METCO Thermal Spray Metallizing Systems



SULZER METCO Thermal Spray Metallizing System



ONLY 150 HOURS

2014



2014 PROGRESSIVE SURFACE CNC Waterjet Stripping System

THERMAL SPRAY METALLIZING SYSTEMS W/ROBOTS

2006 SULZER METCO Thermal Spray Metallizing System - ABB IRB2400 Robot w/IRC5-M2004 Control & Pendant • SULZER 60" Dia. T&R Positioner • SULZER METCO 9MP Powder Feed, S/N 120607 • SULZER METCO 6C Control Unit, S/N E60-70612 • SULZER METCO 9MCD Distribution Unit • SULZER METCO 9MC Plasma Control Unit, S/N 110628 • SULZER METCO Climet HE Heat Exchanger, 8' x 15' x 10.5'H Sound Enclosure
(2) SULZER METCO Thermal Spray Metallizing

Systems - 2000 ABB Type IRB2400 Robot w/ Control & Pendant • SULZER METCO 60" T&R Positioner • 2006 SULZER METCO 9MP Powder Feed, S/N LM941090211-1 & 120607-2 • SULZER METCO 9MC Plasma Control, S/N 100223-2 & KM9253002-3 • SULZER METCO 6C Control Unit, S/N B6C9026-2 & BM986J0016-1 • METCO 6PII Guns • 8' x 15' x 10' (Est.) Soundproof Enclosure
(1) w/2002 SULZER METCO 130-AMP 1DMR-06 Power Supply Unit, S/N SMO22795 • (1) w/SULZER METCO 1,100-AMP 9MRB Power Supply, S/N 310781/3/378410-3YC
SULZER METCO Thermal Spray Metallizing System - MOTOMAN SK16 Robot w/Control & Pendant • Inverted GANTRY System, Motorized Rotary Table • SULZER METCO 9MC Plasma Control Unit, S/N



Large Quantity Thermal Spray Metallizing Supplies

P9MC10612 • 2005 SULZER METCO 9MP Powder Feed, S/N 110502-1 • SULZER METCO 6C Control Unit, S/N N/A • TAFE 9000 Arc Spray Unit, 12' x 12' x 12' Enclosure • ELECTRO PLASMA 1,500-AMP DC Power Supply, Model EPI-486, S/N KC214367
HOBART TAFE Thermal Spray Metallizing System w/Robot, Inverted YASNAC Robot, 4' Motorized Rotary Table • HOBART TAFE Power Supply • ELECTRO PLASMA 1,500-AMP DC Power Supply, Model EPI-486, S/N KC214371
Large Quantity Thermal Spray Metallizing Supplies: VIDMAR & Storage Cabinets Loaded w/Gun Parts, Spare Guns, Metallizing Powder & Material

DUST COLLECTORS-CARTRIDGE TYPE

SULZER METCO SMEOVAL-36, S/N 2259156-1, 30-HP
TORIT DFT4-64, (2) 20-HP Blowers
TORIT DFT4-64, S/N IGO53294, (2) 25-HP Blowers
CHICAGO Blower Size 15 9-Cartridge, 20-HP
(2) TORIT ZDF-12, S/N IGO60753, 20-HP

CNC WATER JET STRIPPING SYSTEM

2014 PROGRESSIVE SURFACE CNC Waterjet Stripping System, S/N 1936/9668, PROGRESSIVE PRIMS Pro CNC Control, 126" Dia. x 42"H x 1,100-lbs. Nominal Part Size, 144" Programmable Table Fixture w/64" x 64" Plate • FANUC M710iC-50 Gantry Robot w/Waterjet Head • FANUC RJ30iB Robot Control w/Pendant • 150-HP JET EDGE 60-150 Waterjet Intensifier Pump, S/N 25660, 155 Hours on Analog Meter • JET EDGE De-Ionization Filter System • KOOLANT KOOLERS WVI-15000 Chiller,

14' x 14' x 14' Stainless Enclosure w/3' Tank Area & Conveyor Reclaim • TORIT Mist Collector (Only 150 Hours)

BOLE 120° Celsius Max. Temp. Electric Oven, Model OV-35.22.35-120-48, S/N BF0300, Digital Control, 12' x 12' x 7' Approx. Chamber Dimensions (For Drying Parts Off Waterjet)

BALANCERS

1999 SCHENCK HL6U Horizontal Balancer, S/N AH18513, CAB690H Control, 22,000-lb. Cap., 133" Max. Dia., 157" Max. Length, 20' Track, 200-HP Drive Motor
1992 SCHENCK 120" Fan Shroud, S/N AHH0303, 52" Deep x 120" Dia., Power Travel
1992 SCHENCK HL50U Horizontal Balancer, S/N AHH0303, CAB690 Control, 125-HP Drive, 10' Base
2007 SCHENCK HMLSU Horizontal Balancer, S/N AHG8545M, CAB690H Control, 3,000-lb. Cap., 62" Max. Dia., 96" Max. Length, 30-HP Drive, 9' Base
2002 SCHENCK HM5U Horizontal Balancer, S/N AHG8528M, CAB690H Control, 3,000-lb. Cap., 62" Max. Dia., 96" Max. Length, 30-HP Drive, 650/1260 RPM, 10' Base
(2) SCHENCK HL5U Horizontal Balancers, S/N's AHG0730 (1992) & AHB8503 (1996), CAB690H Control, 3,000-lb. Cap., 62" Max. Dia., 96" Max. Length, 30-HP Drive, 9' Base
1996 SCHENCK HL2B Horizontal Balancer, S/N AHD8583, 220-lb. Capacity, CAB690H Control
(2) SCHENCK Vertical Balancers, Model VE40L, S/N AVF8512 (1999) • Model VE4L, S/N AVF0159 (1992), CAB-690V Control, 660-lb. Capacity, 70" Max. Dia., 20" Max. Height, PB Control
1992 SCHENCK WM1BA Moment Weighing Scale, S/N AWC0138, Messprozessor MVD2C30A Control, Granite Plate
HOFFMAN HWS-12.1 Scanner, S/N 034133
SCHENCK CAB690 LCD Monitor Kit

CNC BLADE TIP GRINDER

1992 BUTLER NEWALL 8-Axis CNC Precision Blade Tip Grinder, S/N 95BTG4162, Fanuc 15MA Control (5 CNC & 2 PMC), Laser Mic 81 Control • Work Fixture Unit • AAF Stainless Dust Collector, 28.9" Height of Centers • 60" Max. Grinding Length (Depending on fixture) • Travels: 60" Table X-Axis, 22.4" Feed Z-Axis, 15.75" Angle Axis, 12.2" Compensation (PMC) W-Axis, 19.9" Gauge U-Axis (Control thru Lasermike), 24.7" LVDT Probe Axis, 6.4" Dresser Stroke Axis, Programmable Wheel Speed Axis, Workspeed Axis • Diamond Roller • De-burr Brush, 29.9" Max. 22.04" Min. Wheel Dia., 3" Wheel Width, 12,000 FPM Programmable Surface Wheel Speed, Coolant System

DAY 2 - THURSDAY, SEPTEMBER 1ST



BUTLER NEWALL 8-Axis CNC Precision Blade Tip Grinder



SCHENCK HL50U Horizontal Balancer



2007 SCHENCK HML5U Horizontal Balancer



2002 SCHENCK HM5U Horizontal Balancer



SCHENCK HL6U Horizontal Balancer



(2) SCHENCK HL5U Horizontal Balancers



(2) SCHENCK VE40L Vertical Balancers



SULZER METCO SMEOVAL-36 Dust Collector



TORIT DFT4-64 Dust Collector



TORIT DFT4-64 Dust Collector

DAY 2 - THURSDAY, SEPTEMBER 1ST



CAMPBELL 72" CNC Twin-Spindle Vertical Grinder



OVERBECK 5-Axis CNC ID Internal Grinder



OVERBECK Multi-Axis High Precision CNC Cylindrical Grinder



GIDDINGS & LEWIS VTMC-72 3-Axis CNC Vertical Turning Center



GIDDINGS & LEWIS 48VTC 3-Axis CNC Vertical Turning Center



BULLARD Dynatrol 56" Vertical Turret Lathe



2000 HARRISON Alpha 550S 20"/30" x 120" 2-Axis CNC Lathe

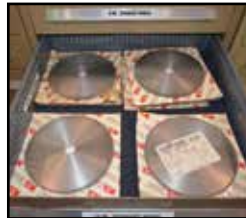


2000 ANAYAK HVM-3300 6-Axis Precision Bed Type CNC UMC



2000 ANAYAK VH-1800V 3-Axis CNC VMC

HUGE QUANTITY OF TOOLING & MACHINE ACCESSORIES





(2) BRIDGEPORT 4-HP Series II Vertical Mills



2009 LAGUN REPUBLIC 9' x 21" Radial Arm Drill



OKUMA 8' x 19" Radial Arm Drill



2015 PARLEC Parsetter TMM Tool Pre-Setter



GALLMEYER & LIVINGSTON 16" x 36" Surface Grinder



GIDDINGS & LEWIS FR-200 Tool Grinder



CINCINNATI MILACRON 2MT Tool Grinder



CINCINNATI MILACRON Monoset Tool Grinder



(2) LODGE & SHIPLEY 20" x 80" Engine Lathes



LODGE & SHIPLEY 20" x 60" Engine Lathe

- (100) Vises by KURT & Others to 8" • (15) Super Spacers • (100) Angle Plates • HAAS 10" 4th Axis Rotary Table w/Servo Control • Hold Down Equipment • Set-Up Equipment • Drill Box Tables • Toolholder Carts • SUNNEN Tooling • Many Other Related Items

ENGINE LATHES

- (2) 1992 LODGE & SHIPLEY 20" x 80" Engine Lathes, Model AVS-2013, S/Ns 51394 & 513939, 24" Actual Swing, 2,000 RPM, Taper, Inch & Metric Threading
- 1992 LODGE & SHIPLEY 20" x 60" Engine Lathe, Model AVS-1709, S/N 51392, 2,000 RPM, Taper, Inch / Metric Threading, DRO
- OKUMA 16" x 48" Engine Lathe, Model LS, S/N 5536, Taper, 1,800 RPM, Accessories
- HARRISON 14" x 40" Engine Lathe, Model M350, S/N 351329, DRO, Taper, Accessories

MILLING MACHINES

- (2) BRIDGEPORT 4-HP Series II Heavy Duty Vertical Mills, S/Ns 7632 & 7485, 11" x 60" Table, DRO, PB Control
- BRIDGEPORT 2-HP Series I Vertical Mill, S/N 259582, 9" x 48" Table, DRO

RADIAL ARM DRILLS

- 2009 LAGUN REPUBLIC 9' Arm x 21" Column, Model RL-2775, S/N 18785, Power Elevation, Power Clamping, 78" Base to Spindle End
- OKUMA 8' Arm x 19" Column, S/N 2050, Power Elevation & Clamping, Approx. 6' Spindle to Base
- CARLTON 4' & 3' Arm x 11" Column, S/Ns 1A4021 & 1A3615

GRINDERS

- GIDDINGS & LEWIS Winslomatic FR-200 Tool Grinder, S/N 946-0079-91, Pope Dual Wheel Spindle, Precise PVSF Control, w/LS11 Fixture, DRO, Optical
- CINCINNATI MILACRON 2MT Tool Grinder, S/N 7703-A01-91-0017, Fixtures & Accessories
- CINCINNATI MILACRON Monoset Tool Grinder, S/N 3152A0177-0095, Attachments
- GALLMEYER & LIVINGSTON 16" x 36" Hydraulic Surface Grinder, Model 570, S/N 226, Incremental Feed, Electric Chuck, Coolant
- B&S Micromaster 12" x 36" Hydraulic Surface Grinder, Model 1236, S/N 523-1236-309, DRO
- ADRIAN OLIVER Model 600 Drill Grinder, S/N G-7555
- (10) Various Tool DE Grinders (HAMMOND, BALDOR & OTHERS)
- (5) TORIT Dust Collectors to 3-HP

CNC VERTICAL GRINDER

CAMPBELL 72" CNC Twin-Spindle Vertical Grinder, Model ER-7280-48D-MOD-B, S/N 763-91, Fanuc 150M CNC Control, 80" Actual Swing, Approx. 48" Vertical Rail Travel, Approx. 36" L-to-R Spindle Travel, RH Swivel ID Head w/Turning Fixture, LH Pope A1441G Servo OD Head w/16" x 2" Wheel, 36" Dia. x 20"H Table Riser, Encyclon Coolant System

CNC ID GRINDER

OVERBECK 5-Axis CNC ID Internal Grinder, Model 610-I-CNC, S/N 66.277 (Updated by CNC Engineering w/Fanuc Oi-TD CNC Controls & Fanuc Servos in 2011), Approx. 24" Swing, Headstock w/12" Chuck, 3-Position Rear Grinding Spindle Turret, GMN TSSV-170 9,000 RPM Head, GMN TSSV-150 20,000 RPM Head, GMN TSSV-150 18,000 RPM Head, Volkman V/S Drive Control, Coolant System w/Filtration & Chillers

CNC OD GRINDER

OVERBECK Multi-Axis High Precision CNC Cylindrical Grinder, Model 2010-R-CNC, S/N 63.104, Marposh E9034 Control, GT VM7 Balancer, 18" Swing, 72" Centers, 30" Dia. x 1" Wheel, Motorized Headstock, 18.5 KW Spindle Motor, In-Process Gauging, Coolant w/Filtration & Chiller

CNC VERTICAL TURNING CENTERS

1992 GIDDINGS & LEWIS 72" VTMC-72 Heavy Duty 3-Axis CNC Vertical Turning Center, S/N 514-36-92, Giddings & Lewis Numeripath 8000 Control; S/N 514-0036, 82" Approx. Swing, 70" Approx. Under

Rail, 75-HP Table Drive, 45-Position ATC, ANSI 60 Taper Spindle, Heavy Duty 10.5" Ram, 2,640 RPM Spindle, 40-HP Spindle Drive, Coolant, Chip Conveyor

1992 GIDDINGS & LEWIS 48" Heavy Duty 3-Axis CNC Vertical Turning Center, Model 48VTC, S/N 512-325-92, GIDDINGS & LEWIS Numeripath 8000 Control, 62" Approx. Swing, 60" Approx. Under Rail, 75-HP Table Drive, Heavy Duty 10.5" Ram, ANSI 60 Spindle, 45-Position ATC, 2,200 RPM Spindle, 40-HP Spindle Drive, Chip Conveyor, Coolant w/Chiller

VERTICAL TURRET LATHE

BULLARD Dynatrol 56" Vertical Turret Lathe w/ Grinding Spindle, S/N 31171, 66" Actual Swing, Approx. 66" Under Rail, 5-HP Grinding Spindle, Turret Head, 50-HP Table Drive, Inch & Metric Threading, Cutting & Drum Scoring, Dual Pendant, Table Speeds to 250 RPM

CNC FLAT BED LATHE

2000 HARRISON Alpha 550S 20"/30" x 120" 2-Axis Flat Bed CNC Lathe, S/N S500/26, Harrison Fanuc Control, 20" Over Bed, 30" in Gap, 15" Over Toolpost, 12" Chuck, Accessories

CNC HORIZONTAL BED MILL

2000 ANAYAK HVM-3300 6-Axis Precision Bed Type CNC Universal Machining Center, S/N M-20000208, Fanuc 16i-M Control, 36" x 92" Main Table, TROYKE 42" Dia. NC-42A CNC Rotary Table, S/N 5263-9, Travels: 106" X-Axis, 47" Y-

Axis, 57" Z-Axis, Universal Milling Head, 50 Taper, 30-Position ATC, 50 KW Spindle, M&T Type 33 Laser Probe, Chip Conveyor

CNC VMC'S

2000 ANAYAK VH-1800V 3-Axis CNC Vertical Machining Center, S/N M20000209, Fanuc 16i-M Control, 27" x 71" Table, 32" Throat, Travels: 63" X-Axis, 31.5" Y-Axis, 31.5" Z-Axis, M&H Laser Probe, 50 Taper, 24-Position ATC, 36 KW Spindle Motor, Coolant

1992 GIDDINGS & LEWIS 10VFS CNC Vertical Machining Center, S/N 912-42-92, Giddings & Lewis Numeripath 8000 Control, S/N 912-0042, 24" x 84" Table, No. 50 Taper, 40-Position ATC, Coolant, Chip Conveyor

MACHINE ACCESSORIES & TOOLING

- 2015 PARLEC Parsetter TMM Tool Pre-Setter, Model 1550-320-400, S/N P1325158-0315
- (200) CAT 60 Toolholders: Renishaw Probe Heads, Boring, Turning & Collet Heads
- (300) CAT 50 Toolholders: Right-Angle Milling Heads, KAESER Boring Bar Set, RENISHAW Probes, End Mills, Collet, Boring Bars
- (100) VIDMARS Loaded w/Perishable & Indexable Tooling
- Lathe Tooling: Chucks, Stead Rests, Aloris Toolpost Holders, Centers, Indexable Boring & Turning Tools
- 100's of Lots of Machine Accessories & Tooling:
- (30) Standard & Tilting Rotary Tables to 36" Dia.

DAY 2 - THURSDAY, SEPTEMBER 1ST

2010



2010 JENFAB Lean Clean S.S. Aqueous Basket Type Parts Washer



PROCECO Rotary Parts Washer



JENFAB Basket Type Parts Washer



DOALL 36" Vertical Band Saw



DOALL 20" Vertical Band Saw



DAKE MEP 12" Cold Saw



SUNNEN MBB-1660 Precision Hone



SUNNEN MBC-1805 Hone



2007 DAKE 40-Ton H-Frame Press

2007



DOALL 16" x 16" Horizontal Band Saw



DRIES & KRUMP 4' x 12-Ga. Finger Brake



(10) 8' Double Sided Cantilever Racks



MAGNAFLUX 7' x 10' x 40'L Pass-Thru Large Part Inspection System



Approx. 40' x 60' Overhead Monorail System



MAGNAFLUX SB1619 Demag Unit



MAGNAFLUX SPECD990XLR 13'L Particle Inspection Bench



MAGNAFLUX AD-945 Particle Inspection Bench



(3) MAGNAFLUX ZY-5472 Dry-Off Stations



(3) PRESTON EASTIN PA-15HD4 1,500-lb. Weld Positioners



COOPERHEAT 6-Way Power Source Control Console



H&H 50 KVA Spot Welder



(5) MILLER Synchronwave TIG Welders



MILLER Dynasty DX TIG Welder



INSERT SYSTEMS Welding Chamber

Drills, Grinders, Sanders, Pedestal Vises, Chop Saws
(10) 8' Double Sided Cantilever Racks w/Bar Stock to 24'L

WELDING EQUIPMENT

(3) PRESTON EASTIN 1,500-lb. Tiling & Rotating Weld Positioners, Model PA-15HD4
COOPERHEAT 6-Way Power Source Control Console, Unit No. PMD-95-01-003, Digital Control System
H&H 150 KVA PRESS Type Spot Welder, S/N H4995
(5) MILLER Synchronwave 351, 350, 251 & 250 TIG Welders
(2) MILLER Millermatic 250 & CP-302 MIG Welders
MILLER Dynasty DX TIG Welder
INSERT SYSTEMS Welding Chamber
MILLER Spectrum 2050 Plasma Power Supply
NELSON NCD100SA Stud Welder
(15) PLYMOUTH Flexible Fume Collector Arms
Welding Accessories: Leads, Tables, Curtains, Safety Equipment & Supplies

MAGNAFLUX SYSTEMS - STANDARD & LARGE PART

MAGNAFLUX 7' x 10' x 40'L Zyglo Type ZA-6471 4-Station Pass-Thru Large Part Inspection System, S/N 92496, Galvanized Modular Panel Booth w/(3) 12'W x 9' Sections, End 8' x 12' Booth, Sliding Doors Between Each Chamber • TORIT MC4000 & MC6000 Mist Collectors • TORIT DFT4-16 Dust Collector, PB Control, Exhaust Fans & Duct Work

Approx. 40' x 60' Dual Loop Overhead Monorail System w/(6) 1/2-Ton RM Electric Cable Hoists
MAGNAFLUX SPECD990XLR 13'L Particle Inspection Bench, S/N 92122, Headstock, (2) GD-144 Lights
MAGNAFLUX AD-945 Particle Inspection Bench, S/N 201232, 60" Bench Width, Coil, Tailstock, Control
MAGNAFLUX X2152M Particle Inspection Bench, S/N 96162
MAGNAFLUX SB1619 Demag Unit, S/N 96161
(8) MAGNAFLUX 66" x 52" x 30" Deep Stainless Steel Dip Tanks
(3) MAGNAFLUX Model ZY-5472 Dry-Off Stations, (1) w/Torit Vibra Shake 1200 Dust Collector

PARTS WASHERS

JENFAB Lean Clean 360 S.S. Aqueous Basket Type Parts Washer, S/N 12031, 48" x 24" Chamber, Stainless Tank, (2) 10-HP Pumps, Chicago Hot Air Blow-Off (2010's)
JENFAB Basket Type Aqueous Parts Washer, S/N 11991, 12" x 20" x 6.5"H Basket Size, Allen Bradley PLC (2010's)
1996 PROECO Rotary Parts Washer, Model HD-62-60-S-2000, S/N 96-224, Full Model HD-62-60-S-2000-CO-2-R-BO-SS, 2,000-lb. Load Capacity, 60" Max. Dia., 60" Max Height, Wash, Rinse, Fresh Water Rinse, Blow-Off, Programmable Control
(100) Stainless Washer Baskets to 3' x 4'

(500+) Equipment Photos.
See Website for Details.

SAWS

DOALL 16" x 16" Automatic Horizontal Band Saw, Model C410A, S/N 485-92115, 24" Bar Feed, Hydraulic Vise, PB Control, Coolant
DOALL 36" Vertical Band Saw, Model 3613-1, S/N 440-92495, Welder
DOALL 20" Vertical Band Saw, Model 2013-V, SM 457-912141, Welder
DAKE MEP 12" Cold Saw, Model 350, S/N 50055, PB Control
GRIZZLY 8" x 10" Mitre Head Horizontal Band Saw

MISC. TOOLROOM MACHINERY

SUNNEN MBB-1660 Precision Hone, S/N 4W1-

94645, Tooling
SUNNEN MBC-1805 Hone, S/N 91867, Tooling
2007 DAKE 40-Ton Electric Hydraulic H-Frame Press, Model PSS-40, S/N 5581
(2) DAKE Electric Hydraulic H-Frame Presses, Model 6-275 & 5-059
PRATT & WHITNEY 3B Precision Jig Bore, S/N M1695-547, (Rebuilt by Ceda Co. 1992), 24" x 55" Table, DRO, J&P Roto-King Control
DRIES & KRUMP 4' x 12-Ga. Finger Brake, S/N 326821T, Model BPU412-6
D&K 6" x 12-Ga. Hand Brake
ROTEX 18A2 Hand Turret Punch
(5) WOLVERINE 3' x 5' Grinding Benches, Model 1-15B
(5) ARBORGA Geared Head Floor Drills
(6) HAMMOND D.E. Pedestal Carbide Grinders
Large Quantity Late Model Arbor Presses, Floor



ABRASIVE BLAST SYSTEMS 10' x 10' x 18' Drive-In Blast Room



(3) ABRASIVE BLAST SYSTEMS 6' x 6' x 6' Blast Cabinets



ABRASIVE BLAST SYSTEMS 8' x 8' x 6'H Blast Booth



(2) DESPATCH 850° Electric Fired Ovens



(2) DESPATCH 650° Electric Batch Ovens



GRIEVE 1,050° Walk-In Electric Furnace



GRIEVE 1,050° Single Door Batch Oven



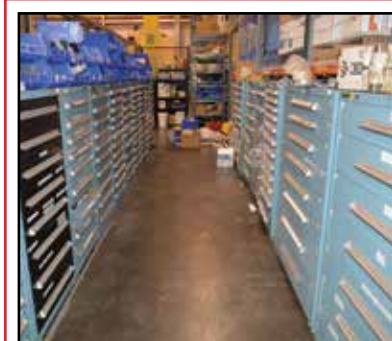
(2) 2014 GE NC Reverse Osmosis Systems



(2) ATLAS COPCO 75-HP Air Compressors



MASTER CHEMICAL Coolant Filtration System



(100+) STANLEY VIDMAR Cabinets & BOWMAN Hardware Bins w/Large Inventory of Electrical, Plumbing & Maintenance Parts

BLAST EQUIPMENT

ABRASIVE BLAST SYSTEMS 10' x 10' x 18' Modular Drive-In Blast Room, (5) Auger Reclaim Systems, Cyclone, Sand Pot & Hopper, Hand Spray Station
 (3) ABRASIVE BLAST SYSTEMS 6' x 6' x 6' Hand Blast Cabinets, 5' x 5' Front Door, (3) Auger Reclaim, Cyclone & Pressure Pot, 5' Rotary Tables
 ABRASIVE BLAST SYSTEMS 8' x 8' x 6'H Hand Blast Booth, (4) Auger Reclaim, 3' x 3' Front Door, 5' x 8' Side Door, Cyclone w/Pressure Pot
 BINKS 15'W x 9'D x 10'H Modular Panel Spray Booth, Rear Draft

Ovens & Furnaces

LUCIFER 2,450° Natural Gas Furnace, Model LIGT-3029E, S/N 5719, Digital Control

LUCIFER 1,250° Electric Furnace, Model 42-024, S/N 5720, Digital Control
 GRIEVE 1,050° Walk-In Electric Furnace, Model High Temp, S/N 660526, Future Design Digital Control, 7' x 7' x 9' High Inside Chamber Dimensions w/Cart
 GRIEVE 1,050° Single Door Batch Oven, Model AG1000, S/N 87123A04, 4' x 3' x 3' Chamber
 (2) DESPATCH 850° Electric Fired Ovens, Model PWE3-21-1E, S/N 157474-M & Model PWD3-21-1E, S/N 153852L, 6' x 6' x 6' Inner Dimensions w/Cart
 (2) DESPATCH 650° Electric Batch Ovens, Model TFD2-52-1E & PWD2-52-2E, S/Ns 183838 & 148758, 48 KW, 3' x 3' x 5' Chamber w/Cart
 E.J. CALLAHAN & ASSOC. 650° Electric Batch Oven, Model 444, S/N 62691, 30 KW
 (5) DESPATCH Bench Top Electric Ovens

REVERSE OSMOSIS SYSTEMS

(2) 2014 GE NC Reverse Osmosis Systems, Model Model RO, E8-57K-DLX, 460, 6, S/N 14-2380000BN, Permeate Rate 77° 40GPM, 13GPM Concentrate Rate, 30/60 PSIG Min/Max Inlet, 15-HP Pumps

MAINTENANCE PARTS

Huge Facilities & Maintenance Cribs: (100+) STANLEY VIDMAR Cabinets w/Contents of Electrical, Plumbing, Equipment, Maintenance, Bearings
 • Pneumatic Tool Rebuild Kits • Repair Parts
 • Pumps • Motors • Machine Tooling • Spools of Wire • Electronics • Filters • Lifts • Gauges
 • (30) Sections BOWMAN Nut / Bolt / Hardware

Bins • All Thread • Abrasives • Brushes • Paint Supplies • Bathroom Supplies • First Aid Supplies • Rain Suits • Zip Ties • Gloves • Batteries • Wire Brushes

UNABLE TO ATTEND?

Bid Online in Real Time at

BidSpotter.com

DAY 1 & 2 - WEDNESDAY, AUGUST 31ST & THURSDAY, SEPTEMBER 1ST



400+

(400+) VIDMAR Tooling Cabinets



200+

(200+) VIDMAR Bench Height Cabinets



20'W x 36'L x 12'H Modular Mezzanine

450,000 SQ. FT. LATE MODEL, VERY CLEAN SHOP EQUIPMENT



100+



500+



100+



VIDMAR CABINETS

(400+) VIDMAR Tooling Cabinets, Most Standard 30"W x 60"H, Some Double Wide, Some Single Swing Door Type
(200+) VIDMAR Bench Height Cabinets, 30" x 30", 75% Have Maple Workbench Tops

SHOP & SUPPORT EQUIPMENT

20'W x 36'L x 12'H Modular Bolt-Together Mezzanine, Stairs, Shop Office
(10) Free-Standing Jib Cranes from 1/2-Ton to 3-Ton Capacity
GAFFEY 16-Ton x 20' (Est.) Span Free-Standing A-Frame Crane, Approx. 30' Under Hook
(10) Various Electric Hoists to 3-Ton Capacity

T/A Steam Clean Power Wash Trailer, 31-HP Gas Engine, 525-Gallon Water Tank
(3) SIOUX E-180-H4 Electric Power Washers
Yellow Bellied Sump Sucker w/LP Gas Kohler Engine
BLUTT MFG. 16,000-lb. Portable Yard Ramp, Model 15Y58436L, S/N 160629
MASTER CHEMICAL XY Box Central Coolant Filtration System, Skid Mounted, (2) Clean Components, (2) Dirty Components, Oil Skimmer
(2) ATLAS COPCO 75-HP Air Compressors, Model GA55
RIDGID 1822 Electric Pipe Threader
(20+) Enerpac Hydraulic Power Units
Large Quantity Tools for Machine & Building Maintenance: Hand & Power Tools • GREENLEE Tools • Mechanic's Tool Chests • Plumbing Video Scopes & 100's of Other Items

Huge Quantity of Late Model, Very Clean Shop Equipment to Support a 450,000 Sq. Ft. Facility: (100) Various Sections Pallet Rack • (100) Fireproof Cabinets of All Sizes • (1,000+) Various Style Steel Carts • (500) Rubbermaid Carts • (1,000) Maple & Press Board Top Work Benches • Bin Type Storage Cabinets • (50+) Hydraulic Pallet Jacks • (20+) 2-Wheel Dollies • (50+) Strong Hold Storage Cabinets • (100+) Step & Extension Ladders • Rolling Shop Ladders • Die Carts • Lifting Fixtures • Chains • Slings • Pedestal Fans • Air Hose Reels • Tool Boxes • Job Boxes • Storage Cabinets • Shop Vacs • Spill Skids • Huge Quantities of Shop Supplies • New Safety Equipment & Many Other Related Items



Large Quantity of Tool Boxes, Job Boxes & Storage Cabinets

PUBLIC PUBLIC

AUCTION

HUGE 2-DAY AUCTION

TAESL-TEXAS AERO ENGINE SERVICES LLC

2100 Eagle Parkway in Ft. Worth, Texas

WEDNESDAY, AUGUST 31st
THURSDAY, SEPTEMBER 1st
STARTING AT 10AM EACH DAY

Inspection: Tues., August 29th & Wed., August 30th from 9AM-4PM



1 OF 5

NEW AS 2006

(5) SULZER METCO & HOBART TAFA Thermal Spray Metalizing Systems

Myron Bowling Auctioneers Inc.
 P.O. Box 389
 ROSS, OHIO 45061

PRE-SORT
 FIRST CLASS
 U.S. POSTAGE
PAID
 CINCINNATI,
 OHIO
 PERMIT NO. 5714

FIRST CLASS MAIL!



SCHENCK HL6U Horizontal Balancer



2014 PROGRESSIVE SURFACE CNC Waterjet Stripping System

Important Mail

TO BE DIRECTED TO THE ATTENTION OF EXECUTIVE PERSONNEL

HUGE 2-DAY AUCTION OF COMPLETE LIQUIDATION OF 450,000 SQUARE FOOT STATE-OF-THE-ART JET ENGINE OVERHAUL FACILITY, MAINTENANCE AND REPAIR FACILITY

PUBLIC PUBLIC

AUCTION

HUGE 2-DAY AUCTION

TAESL-TEXAS AERO ENGINE SERVICES LLC

2100 Eagle Parkway in Ft. Worth, Texas

WEDNESDAY, AUGUST 31st
THURSDAY, SEPTEMBER 1st
STARTING AT 10AM EACH DAY

Inspection: Tues., August 29th & Wed., August 30th from 9AM-4PM

REMOVAL & PAYMENT

Machinery removal is the responsibility of the buyer. All equipment must be removed in accordance with the specific auction timeline and terms of sale. See the specific auction web page for details. Anyone (rigger or buyer), using a powered vehicle to remove items must have a certificate of insurance on file with Myron Bowling Auctioneers in the amount of \$1,000,000.00. Item removal generally begins at the conclusion of the auction and after payment in full is received by cash, wire transfer, or company check (if approved by the auction company or bank letter of guarantee). All checks should be made payable to Myron Bowling Auctioneers. Taxes will be charged unless you have provided a proper written exemption from your state.

TERMS OF SALE

Copies of Terms of Sale will be posted at the auction. Additional terms may be announced during the auction. We make every effort to accurately describe each item in the auction; however, a mistake may occur. Buyers must take responsibility to thoroughly inspect the items on which they intend to bid. Each item will be sold "As is, where is." There is absolutely no warranty or guarantee of any kind either written or implied. Occasionally, additional information may come to light regarding any and all items being sold during the auction. When this occurs the new information takes precedence. COMPLETE TERMS & CONDITIONS can be found at myronbowling.com, or call 513/738-3311 if you have questions.

BUYER'S PREMIUM: 15% ONSITE • 18% ONLINE
 INSPECTION: TUES., AUGUST 29TH & WED., AUGUST 30TH FROM 9AM-4PM

DIRECTIONS

From I-35W, 25 miles north of DFW exit at No. 68 Eagle Parkway. Turn West onto Eagle Pkwy. and proceed 1-1/2 miles to the Auction site on left. Facility is located on the north side of Fort Worth Alliance Airport.

LODGING

Comfort Suites (817) 490-1455
 801 Byron Nelson Blvd. 76262

Hampton Inn (817) 439-0400
 13600 N Fwy Service Rd E. 76177

Holiday Inn Express (817) 490-9400
 13501 Raceway Dr. 76262

AUCTIONEERS

Myron C. Bowling - 12989
 Jeffrey Luggen 11379, CIA 11380



sale
 conducted
 by

MYRON BOWLING
 AUCTIONEERS, INC.
 www.myronbowling.com

in
 conjunction
 with

CIA CINCINNATI
 INDUSTRIAL
 AUCTIONEERS
 cia-auction.com