

COMPLETE PRECISION SHEET METAL FABRICATING AND PLASTIC INJECTION MOLDING FACILITY
INCLUDING LVD/STRIPPIT CNC TURRET PUNCHES, CINCINNATI & DI-AGRO PRESS BRAKES, (5) NORLOCK
CLINCHING MACHINES, SHEET METAL FABRICATING & WELDING EQUIPMENT, (4) ROUSSELLE SSDC PRESSES,
INJECTION MOLDERS, PACKAGING MACHINES, FORKLIFTS, AIR COMPRESSORS, SHOP AND SUPPORT EQUIPMENT

BidSpotter.com
See Instructions on Page 5
To Become a Qualified Bidder on the Internet

PUBLIC AUCTION

Plant Closed / Former Property of

RESTLESS NOGGINS MFG., LLC

332 Orchard Ave. NE – North Canton, Ohio 44720

SALE DATE: WEDNESDAY, APRIL 29TH, STARTING AT 9:00 AM

INSPECTION: TUESDAY, APRIL 28TH FROM 10:00 AM TO 4:00 PM



(3) 30-20 Ton LVD/Stripit CNC Turret Punch Press (New as 2011)



(4) 40 Ton Rousselle Model 4S572 Straight Side Double Crank Presses



(2) 90 Ton Cincinnati Press Brakes (New as 2011)



(2) 230 Ton X 10.9 Oz. Van Dorn Demag Model 230HT500 Hydraulic Toggle Clamp Plastic Injection Molding Machines



Large Quantity of Sheet Steel/Raw Inventory; Copper Coils, Stainless Steel Stock, Galvanized Sheet Stock



Sale Under The Management Of

CINCINNATI INDUSTRIAL AUCTIONEERS

auctioneers | appraisers | since 1961 | cia-auction.com | info@cia-auction.com
2020 Dunlap St., Cincinnati, Ohio 45214 Phone 513-241-9701 Fax 513-241-6760



**NEW
2011**

22 Ton LVD/Strippit Model M1212 Thick Turret CNC Punch Press



Stippit Model "Wet Grinder" Punch Grinder

CNC TURRET PUNCH PRESSES & TOOLING

22 Ton LVD/Strippit Model M1212 Thick Turret CNC Punch Press; S/N 010101711, Fanuc Series 18i-PB CNC Controls, 47-Station Thick Turret, (3) Auto Index Stations at Positions: 1-18-3 **(New 2011)**

SEE PHOTO

22 Ton LVD/Strippit Model S1212 Thick Turret CNC Punch Press; S/N 038072709, Fanuc Series 180i-P CNC Controls, 31-Station Thick Turret, (3) Auto Index Stations at Positions: 1-13-20 **(New 2009)**

SEE PHOTO

Stippit Model "Wet Grinder" Punch Grinder; S/N 0202700-000, 5" 3-jaw Chuck

SEE PHOTO

Large Quantity of Primarily Wilson Thick Turret Style Punch Tooling in (4) Vidmar Type Tooling Cabinets

SEE PHOTO

CNC TURRET / LASER PUNCH

33 Ton LVD/Strippit Model FC1250-H/30C Thick Turret CNC Laser Punch Press; S/N 034021497, Faunc Series OP CNC Controls, 42-Station Turret, (2) Auto Index Stations at Positions 13 and 34, (1) 4-1/2" Punch Station at Position No. 28, 1,350 Watt Rofin Sinan Laser Model 1350SM; S/N 283-283 **(New 1997)**

SEE PHOTO

CINCINNATI PRESS BRAKES

90 Ton x 12' Cincinnati Model 90PFX10F Proform CNC Hydraulic Press Brake; S/N 54705, 8" Max Stroke, CNC Back Gage, 144" Bed and Ram, 126" Between Side Frames, Floor Pedestal & Foot Pedal Control, Floor Standing Machine **(New 2011)**

SEE PHOTO

90 Ton x 10' Cincinnati Model 90CBX 8' Press Brake; S/N 42388, 8" Max Stroke, 120" Bed and Ram, 102" Between Side Frames, Bottom and Top Stop Control Panel, Cincinnati Waveguard Control Panel, Palm Buttons and Foot Pedal

SEE PHOTO

Large Quantity Press Brake Tooling SEE PHOTO

(12) DI-ARCO PRESS BRAKES

35 Ton x 8' Di-Arco No. 16-96 Hydra Power CNC Press Brake; S/N JH-1119, Automec CNC 90 Autogauge Back Gage System, 96" Bed and Ram, 61" Between Side Frames, Foot Pedal

(5) 35 Ton x 8' Di-Arco Model No.16-96 Hydra Power Press Brakes; S/N 6601276285, 6600776253, JH-1050, 6600376232, and N/A, 96" Bed and Rams, 62" Between Side Frames, Foot Pedals; S/N 6601276285 Equipped with Light Guards

(2) 35 Ton x 6' Di-Arco Model N. 14-72 Hydra Power Press Brakes; S/N JG-1094 and N/A, 96" Bed

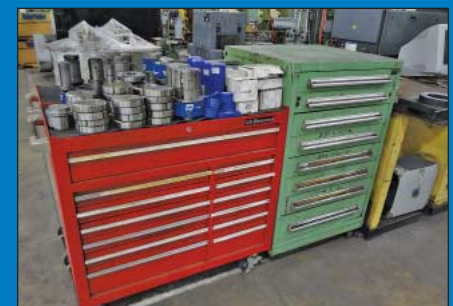


**NEW
2009**

22 Ton LVD/Strippit Model S1212 Thick Turret CNC Punch Press



33 Ton LVD/Strippit Model FC1250-H/30C Thick Turret CNC Laser Punch Press



Large Quantity of Primarily Wilson Thick Turret Style Punch Tooling in (4) Vidmar Type Tooling Cabinets



RESTLESS NOGGINS MFG., LLC



NEW 2011

90 Ton x 12' Cincinnati Model 90PFX10F Proform CNC Hydraulic Press Brake



90 Ton x 10' Cincinnati Model 90CBX 8' Press Brake



(4) 40 Ton Rousselle Model 4SS72 Straight Side Double Crank Presses

and Rams, 62" Between Side Frames; S/N 1094, Has Manual Back Gage

(3) 17 Ton x 4' Di-Arco Model No. 14-48 Hydra Power Press Brakes; S/N's JD-1155, JD-1419 & 6820282846, 48" Bed and Rams, 36" Between Side Frames, Foot Pedals

17 Ton x 4' Di-Arco Model No. 17T-1448-1 Hydra Power Press Brake; S/N 6801185999, 48" Bed and Ram, 62" Between Side Frames, Foot Pedals

12 Ton x 3' Di-Arco Model No. 16-36 Hydra Power Press Brake; S/N 1-1119, 36" Bed and Rams

Large Quantity Press Brake Tooling

ROUSSELLE SSDC PRESSES & FEED EQUIPMENT

(4) 40 Ton Rousselle Model 4SS72 Straight Side Double Crank Presses; S/N P-32851, P-32904, P-

32902, 105 SPM, 5" Stroke Length, 13-1/2" Shut Height, 3" Slide Adjustment, 22" x 72" Bed, American Aerostar Quick Change Die Controllers, Fingertip Controls **SEE PHOTO**

PA Industries Model CTL6 Stock Straightener; S/N 201103-06036, with PA Model "Mini" Pendant Controls
3,500 Lb. Capacity Norwalk Press Room Equipment Model RR3542-100 Horizontal Uncoiler; S/N 426139, 42" Diameter, Motorized Table, Forward / Reverse Controls

SHEET STEEL / RAW MATERIAL INVENTORY

(15) Coils of .0188 X 4" X C. Copper Stock Net Weights of Coils Rang From 1,000 to 1,456 Lb. with a Total of Approx. 18,700 Lb. Based Upon Mfg. Tags

(60) Coils of Copper Clad Stock Material with Copper Coating,

Estimated at 25 to 30,000 Lb.

(250) Sheets of T304 Polished Stainless Steel, 20 Ga. X 48" X 36", Approx. 5,000 Lb. Based on Supplier Tags

(15,900) Sheets of .0282 X 48" X 26" Galvanized Flat Stock, Approx. 164,000 Lb. Based on Supplier Tags

(15) Sheets of 14 Gage X 48" X 120" T304 Stainless Flat Stock, Approx. 19,000 Lb. Based on Suppliers Tags

**(500) Sheets of .0466 X 24" X 48" Aluminized Flat Stock
Other Steel and Stainless Flat Stock in Sheets Up To 48" X 120" Several Thousand Pounds of Light Gauge Steel and Stainless Fabricated In-Process Parts on Skids and In Gaylords**



Large Quantity of Sheet Steel/Raw Inventory; Copper Coils, Stainless Steel Sheet Stock, Galvanized Sheet Stock



(12) Di-Acro Press Brakes from 35 Ton to 12 Ton



Large Quantity Press Brake Tooling



(2) 230 Ton X 10.9 Oz. Van Dorn Demag Model 230HT500 Hydraulic Toggle Clamp Plastic Injection Molding Machines



440 Ton X 29 Oz. Cincinnati Model VT440-29 Injection Molding Machine



Penn Engineering / Pemseter 2000 Model 2019A-1444 Insertion Machine

PLASTIC INJECTION MOLDING MACHINES

(2) 230 Ton X 10.9 Oz. Van Dorn Demag Model 230HT500 Hydraulic Toggle Clamp Plastic Injection Molding Machines; S/N 1351 and 1352, Pathfinder 3000 Controls, 22" X 22" Distance Between Tie Bars, 32" X 32" Platen Size, 42" Max. Daylight, 40 HP SEE PHOTO

440 Ton X 29 Oz. Cincinnati Model VT440-29 Injection Molding Machine; S/N 4039A61/91-10, 29" X 29" Distance Between Tie Bars, 40" x 40" Platen Size, 40" Daylight, 5" Diameter Tie Bars, Cincinnati CAMAC VEL Controls SEE PHOTO

PEMSETER INSERTION MACHINE

Penn Engineering / Pemseter 2000 Model 2019A-1444 Insertion Machine; S/N 1444, 24" Throat, Hitech Monitor, Light Steam Infrared Safety Technology, JB Model JB-24-L Vibratory Bowl Feeder, Foot Pedal (New 2011) SEE PHOTO

NORLOCK CLINCHING MACHINES

(4) Norlok Model Surelok SLII-P-18 Pneumatic Toggle Lock

Clinching Machines; S/N 11036, 11035, 08020, 97054, 18" Throats, Foot Pedals

Norlok Model Surelok SLII-P-25 Pneumatic Toggle Lock Clinching Machine; S/N 090253, 25" Throat, Foot Pedal

Norlok Model Surelok FTSL-12 Pneumatic Toggle Lock Clinching Machine; S/N 11005, 12" Throat, Foot Pedal

HYDRAULIC PRESSES

12 Ton Denison Model TL120C20 Hydraulic C-Frame Press; S/N 21288-MDS210 SEE PHOTO

4 Ton Denison Multipress Hydraulic C-Frame Press; S/N 24278, 12" Stroke, 9" Throat SEE PHOTO

3 Ton Denison Model W2A-3P Hydraulic Press; S/N 3214

FABRICATION EQUIPMENT

10 Ga. X 72" Wysong Model 1072 Mechanical Shear; S/N P-4-106, 96" Squaring Arm, Foot Bar SEE PHOTO

36" Di-Arco Model 465 Powered Slip Rolls; S/N 465128439

No. 18 Di-Arco Hand Turret Punch; S/N BE-112Z

16 Ga. X 36" Di-Arco No. 36 Kick Shear; S/N EP-1209

No. 1 Di-Arco Hand Notcher; S/N A-4006, 16 Ga. Capacity

Milford Model 56 Roll Set Riveter; S/N 3179

BELT SANDER

36" Timesaver Model 137-1HDM Single Top Belt Sander; S/N 11422, 20 HP with Bag Type Dust Collector SEE PHOTO

AIR COMPRESSORS AND DRYERS

25 HP Sullair Model 10B-25 Rotary Screw Horizontal Tank Air Compressor; S/N 003-56403, 115/125 PSIG

(2) 10 HP Champion Model VR10-12 2-Stage Vertical Tank Air Compressors; S/N D099949 and D091249 SEE PHOTO

10 HP Champion Model CCSRVA 2-Stage Vertical Tank Air Compressor; S/N D023946

Diversified Model JC-15A Air Dryer; S/N U8074

Parker Model ZDHH Air Dyer; S/N 3960658740004



(6) Norlock Pneumatic Toggle Lock Clinching Machines



36" Timesaver Model 137-1HDM Single Top Belt Sander



12 Ton Denison Model TL120C20 Hydraulic C-Frame Press



4 Ton Denison Multipress Hydraulic C-Frame Press



10 Ga. X 72" Wysong Model 1072 Mechanical Shear



(3) Lift Trucks by Toyota, Clark and Mitsubishi Up to 3,000 Lb.



2005 Freightliner Tandem Axle Conventional Cab Road Tractor



2008 Isuzu Model NPR-HD Single Axle Cab Over Box Van Truck

MIG / TIG WELDERS

200 AMP Miller Millermatic 251 Mig Welder; S/N LG080018B, Digital Displays, Integrated Wire Feeder, Single Phase

180 AMP Miller Diversion 180 AC/DC Tig Welder; S/N MC380050J, DC For Stainless Steel Chromoly and AC for Aluminum

Assorted Welding Accessories Including 48" X 48" Steel Welding Tables, Vice Grip Welding Clamps, Pneumatic and Electric Grinders and Other Related Items

SPOT WELDERS

39 KVA Lors Model TE90 Mark II Rocker Arm Type Spot Welder; S/N 4647, 24" Throat, Foot Pedal, PLC Controller **SEE PHOTO**

40 KVA Lors Model 140AP-DV Ram Type Spot Welder; S/N 700-6930, 24" Throat, Foot Pedal, EM000 Controller

20 KVA Lors Model 4204A Rocker Arm Spot Welder; S/N 11-360

PACKAGING AND SHIPPING EQUIPMENT

Orion Model LPD / Flex Series Rotary Pallet Stretch Wrap Machine; S/N 2009-06-V00889, 63" Diameter Platform, Drive on Ramp, 48" Vertical Travel, Magelis Monitor (New 2009) **SEE PHOTO**

Phoenix Model PLP2150 Rotary Pallet Stretch Wrap Machine; S/N 12102651, 57" Diameter Platform, Drive on Ramp, 48" Travel **SEE PHOTO**

(2) 3M Model 700/A3 Automatic Top & Bottom Case Sealers; S/N

50162 and 50164 (New 2011)

SEE PHOTO

3M Model 800 Automatic Case Sealer; S/N 3092

Heat Set Model 12615-8-LDR Heat Tunnel; S/N EKA-4938

VERTICAL BALER

Cram-A-Lot Model 60 CONT-BO-RB Vertical Hydraulic Cardboard Baler; S/N 3597, 30" x 60" x Variable Bale Size **SEE PHOTO**

LIFT TRUCKS

5,000 Lb. Toyota Model 8FGCU25 LP Gas Cushion Tire Lift Truck; S/N 30239, 2-Stage See-Thru Mast, 131" Lift Height, 82" Mast, 2,484 Hours

5,000 Lb. Clark Model GCX25E LP Gas Cushion Lift Truck; S/N 9372FB, 2-Stage Mast, 123" Lift Height, 87" Mast

2,700 Lb. Mitsubishi Model FGC18N-LP Cushion Tire LP Gas Lift Truck; S/N AF81F10363, 3-Stage Mast, 187" Lift Height, 82" Mast

TRUCKS / VAN

2005 Freightliner Tandem Axle Conventional Cab Road Tractor; VIN # 1FUJJC5CY46HY90738, 52,000 GVWR, Eaton Fuller Transmission with 2-Speed Axle, 450 HP Mercedes-Benz Model OM460-LA-CID Diesel Engine, 401,820 Miles **SEE PHOTO**

2008 Isuzu Model NPR-HD Single Axle Cab Over Box Van Truck; VIN # JALC4W16097002325, Automatic Transmission, 4-Cylinder Isuzu Model 4HR11C Diesel Engine Rated at 200 HP, 16' Box With Roll Up Door, 84,235 Miles **SEE PHOTO**

2013 Ford E250 Super Duty

Advance Trac RSC Cargo Van; VIN # 1FTNE2EW1DDB25362, A/C, AM/FM/CD System, Power Locks and Windows, Cruise Control, Gas Engine, Automatic, 10,300 Miles **SEE PHOTO**

SHOP EQUIPMENT

Large Quantity of Shop Equipment to Support a 200,000 Square Foot Facility Including: 48" Arm Double Side Cantilever Rack, (10) 5,500 Lb. Capacity Hydraulic Pallet Trucks, 2-Door Steel Cabinets, Approx. (100) Dewalt Cordless Saws, Cherry Pneumatic Rivet Guns, Self-Dumping Hoppers, Steel Tables, Other Electric and Pneumatic Hand Tools, Ladders, (15) Sections 42" X 72" X 12' Pallet Rack, Pedestal Fans, Roller Conveyor, Banding Sets, Hand Tools, (2) 36 Volt Lift Truck Battery Chargers, 4" X 6" Central Machining Horizontal Band Saw; S/N 93762, (3) Single Spindle Drill Presses, 12" Powermatic Disc Sander, (3) Dyson Model AB02 Airblade Hand Dryers, (7) Fingertec TA200 Plus Color Fingerprint RFID Time Clocks, Maintenance Supplies, and Many Other Related Items

OFFICE FURNITURE

Late Model Office Furniture: (2) 4-Person Haworth Fabric Panel Cubicle Sets with Overhead Laterals, Letter Files, 44" Side Walls, (1) Haworth Reception Area Set, (7) 43" x 94" Maple Colored Conference Tables with (6) Grey Fabric Side Chairs by Loft, (3) Executive Office Sets with Desks, Credenza, Bookcases, Assorted Letter Files, Oxford Files, Office Chairs, (8) 96" Long Plastic Breakroom Tables with Folding Chairs and Other Related Items



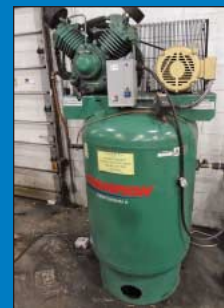
2013 Ford E250 Super Duty Advance Trac RSC Cargo Van



Orion Model LPD / Flex Series Rotary Pallet Stretch Wrap Machine



Phoenix Model PLP2150 Rotary Pallet Stretch Wrap Machine



(2) 10 HP Champion Model VR10-12 2-Stage Vertical Tank Air Compressors



Cram-A-Lot Model 60 CONT-BO-RB Vertical Hydraulic Cardboard Baler

WEBCAST BIDDER INSTRUCTIONS

- All Internet bidders must register for this auction at www.bidspotter.com at least 48-Hours Prior to the Sale Date, **if you do not you will not be approved.**
- All Internet bidders must Post a Deposit of Approx. 25% of Your Planned Spending Budget or \$5,000.00 Minimum with Cincinnati Industrial Auctioneers in Order to be approved to Bid. Those who do Not Post the Deposit Will Not be Approved. **Period.**



Large Quantity of Late Model Office Furniture



(2) 3M Model 700/A3 Automatic Top & Bottom Case Sealers



39 KVA Lors Model TE90 Mark II Rocker Arm Type Spot Welder



(2) Miller Mig & Tig Welders

PUBLIC AUCTION

COMPLETE PRECISION SHEET METAL FABRICATING AND PLASTIC INJECTION MOLDING FACILITY INCLUDING LVD/STRIPIIT CNC TURRET PUNCHES, CINCINNATI & DI-ACRO PRESS BRAKES, (5) NORLOCK CLINCHING MACHINES, SHEET METAL FABRICATING & WELDING EQUIPMENT, (4) ROUSSELLE SSSC PRESSES, INJECTION MOLDERS, PACKAGING MACHINES, FORKLIFTS, AIR COMPRESSORS, SHOP AND SUPPORT EQUIPMENT

Plant Closed / Former Property of

RESTLESS NOGGINS MFG., LLC

332 Orchard Ave. NE • North Canton, Ohio 44720

SALE DATE:
Wednesday, April 29th
STARTING AT 9:00 AM

INSPECTION:
Tuesday, April 28th
10:00 AM to 4:00 PM



CINCINNATI
INDUSTRIAL AUCTIONEERS

Contact Information
2020 Dunlap St.
Cincinnati, Ohio 45214
Phone 513-241-9701
Fax 513-241-6760
www.cia-auction.com



(3) LVD/Strippit CNC Punches



(2) 90 Ton Cincinnati Press Brakes



(4) 40 Ton Rouselle SSSC's



Large Quantity of Steel Inventory

FIRST CLASS MAIL!

PRE-SORT
FIRST CLASS
U.S. POSTAGE
PAID
CINCINNATI, OHIO
PERMIT NO. 3593



Important Mail

TO BE DIRECTED TO THE ATTENTION
OF EXECUTIVE PERSONNEL

WEDNESDAY, APRIL 29TH

PUBLIC AUCTION

Plant Closed / Former Property of

RESTLESS NOGGINS MFG., LLC

332 Orchard Ave. NE
North Canton, Ohio 44720

IMPORTANT NOTICE:

Although information has been obtained from sources deemed reliable, the auctioneer makes no warranty or guarantee, expressed or implied, as to the accuracy of the information herein contained. It is for this reason that buyers should avail themselves of the opportunity to make inspection prior to the sale. This brochure is intended to provide general information of the equipment being offered and is subject to errors, omissions, additions or deletions. Please check with the Auctioneer's Office for a final listing. Items offered may or may not necessarily be sold as described and/or photographed in this brochure.

MAIL BIDS ACCEPTED WITH A 25% DEPOSIT

DIRECTIONS

From I-77 Approx. 40 Miles South of Cleveland Exit at Portage Street (No. 111). Go East on Portage 1-1/4 Mile at Which Portage Bears Right and Charollete Bears Left. Go onto Charollete and Proceed 1/2 Mile to Sale Site, Straight After Crossing Main Street. Watch For Auction Signs

AUCTIONEERS

Cincinnati Industrial Auctioneers, Inc. – License No. 63-1983-10439

Jeffrey L. Luggen – License No. 57-1983-33789

Jerome A. Luggen – 62-1983-33799

Joseph M. Luggen – License No. 2010-0000-19

John F. Rome – License No. 57-2000-84249

Ryan L. Luggen – Apprentice Auctioneer



TERMS OF SALE

All equipment described herein will be sold "as is", "where is" to the highest bidder or bidders for cash in accordance with our regular terms and conditions of sale. Unless other satisfactory arrangements are made, a **25% deposit** in cash, certified or cashier's check payable to Cincinnati Industrial Auctioneers, Inc., is required on all purchases. Firm and personal checks accepted only if accompanied by a letter from your bank guaranteeing your funds. **All balances are due at the conclusion of the sale.** No merchandise may be removed while the sale is in progress. **All bidders must comply with our Standard Terms of Sale**, copies of which will be available at the sale site or can be obtained from our website.

15% ONSITE BUYER'S PREMIUM
18% ONLINE BUYER'S PREMIUM

Sale Under The Management Of



CINCINNATI INDUSTRIAL AUCTIONEERS

auctioneers | appraisers | since 1961 | cia-auction.com | info@cia-auction.com
2020 Dunlap St., Cincinnati, Ohio 45214 Phone 513-241-9701 Fax 513-241-6760