

Bidspotter.com
 Select Major Items to be Offered Via
 "Live Internet Bidding" at Bidspotter.com

**LARGE MECHANICAL CONTRACTOR 100'S OF LOTS INCLUDING
 EQUIPMENT, TRUCKS, TOOLS, WELDERS, SUPPLIES & RELATED**

PUBLIC AUCTION

**NEW
 1997**



13" X 18" Hyd-Mech S-20
 Series II Mitre Head
 Horizontal Band Saw

**NEW
 2007**



50 Ton Piranha Model P-50
 Hydraulic Power Iron
 Worker

Large Auction Featuring: Huge Quantity Contractors Tools & Equipment, Welders, Welding Positioners, Pipe Threaders, Pipe Groovers, Pipe Fabrication Equipment, Piranha Ironworker, HEM Band Saw, Ladders, Scaffolding, Lift Trucks, Manlifts, Material Lifts, Vans, Trucks, Trailers, Containers, Lift Trucks, Panasonic Telephone System, Computers, Servers, Late Model Office Furniture & Support Equipment

**Ordered Sold by the Assignee
 Leonard Z. Eppel**

**RPC
 HOLDINGS INC.**

5301 Lester Road – Cincinnati, Ohio 45213
10 Miles North of Downtown Cincinnati off I-71

**SALE DATE:
 Tuesday,
 September 28th**
Starting at 9:00 AM

**INSPECTION:
 Monday, September 27th**
10:00 AM to 4:00 PM

www.cia-auction.com

Features:

- Upcoming Sale Information
- Liquidation & Equipment Section
- Email Auction Notification
- Recent Auction Results
- Lot Catalog Listings
- Photo Galleries
- Downloadable Forms
- Complete Terms of Sale
- Staff Profiles
- Reference Information



Partial View Huge Quantity Welding Equipment
 Including Welders, Positioners, Tools and Supplies



2004 Ford F-350 XL Super Duty Service Truck



Huge Quantity Power and Hand Tools



(70) Job Boxes Of All Types



Partial View Huge Quantity Ridgid Pipe Threading and
 Fabricating Equipment



(11) Genie Cable Type Material Lifts



Huge Quantity Parts Inventory

SALE UNDER THE MANAGEMENT OF



Cincinnati Industrial Auctioneers Inc.

2020 DUNLAP ST., CINCINNATI, OHIO 45214 PHONE (513) 241-9701 / FAX (513) 241-6760
 INTERNET: cia-auction.com for printable brochures, catalog, terms and proxy-bidding



TUESDAY, SEPTEMBER 28TH - 9:00 AM



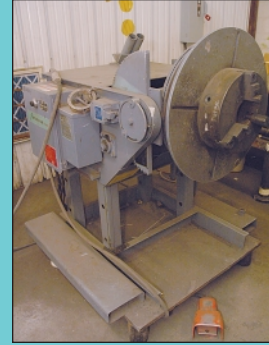
Partial View (2 of 23) Miller Electric Welders



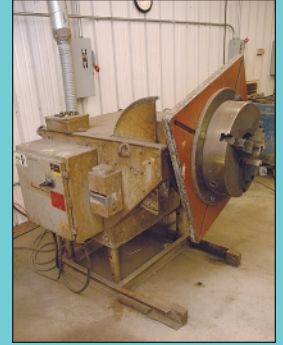
Aercoly WA-1000C Portable Fume Collector



18' Long Mfg. Unk. Motorized Pipe Rotating Welding Positioner



2,000 Lb Aronson Model HD20A-PTVR2 Motorized Tilting & Rotating Welding Positioner



2,500 Lb Aronson Model HD25A Motorized Tilting & Rotating Welding Positioner



Bank View 8,000 Lb Hyster LP & 2,500 Lb Clark Electric Lift Trucks



Partial View (100+) Sections Scaffolding



(2) Workforce Model XLT CAT 23 Electric Manlifts



1998 Ford F-650 22' Stake Bed Truck



Partial View 2004 & 2005 Ford Cargo Vans & Pick-Up Truck

STAKE BED & SERVICE TRUCKS

2004 Ford F-350 XL Super Duty Service Truck; Vin No. 1FTWF32L64ED03648, 32,443 Miles, 5.4 Liter Triton V-8 Gasoline Engine, Automatic Transmission, Ladder Rack, Service Bed, Tool Boxes, RPC No. 2404 **SEE PHOTO**

2002 Ford F-550XL Super Duty 16' Stake Bed Truck; Vin No. 1FDNF56FX2EC71774, 155,322 Miles, Power Stroke Diesel V-8 Engine, Automatic Transmission, 16' Bed, Lift Gate, RPC No. 2200

1998 Ford F-650 22' Stake Bed Truck; Vin No. 1FDND80C7WVA12098, 136,720 Miles, Cummins V-8 Diesel Engine, 5-Speed Manual Transmission, 22' Bed, Lift Gate, RPC No. 981 **SEE PHOTO**

CARGO & HI-CUBE VANS

(2) 2005 Ford E-250 Cargo Vans; RPC No. 2504, Vin No. 1FTNE24LX5HB15527 w/ 121,085 Miles, RPC No. 2506, Vin No. FTNE24LX5HB15530 w/ 88,456 Miles, 5.4 Liter V-8 Gasoline Engine, Automatic Transmission, Ladder Rack, Security Gate

(2) 2004 Ford E-250 Cargo Vans; RPC No. 2401, Vin No. 1FTNE24L64HA37228 w/ 135,141 Miles, RPC No. 2405, Vin No. 1FTNE24LX4HB14148 w/ 122,146 Miles, 5.4 Liter V-8 Gasoline Engine, Automatic Transmission Security Gate, Ladder Rack

1997 Ford E-350 10' Hi Cube Box Van; Vin No. 1FDJE37L6VHA68718, 163,529 Miles, 5.4 Liter Triton V-8 Gasoline Engine, Automatic Transmission, 10' Box, RPC No. 9705

PICK UP TRUCKS

2003 Ford F-150 Pick-Up Truck; Vin No. 1FTRF12W95NA55747, 123,334 Miles, V-8 Gasoline Engine, Automatic Transmission, Ladder Rack, (3) Weather Guard Tool Boxes, RPC No. 2500

1999 Ford F-250 XL Super Duty Pick-Up Truck; Vin No. 1FTNF20L4XEC29553, 122,696 Miles, 5.4L Triton V-8 Gasoline Engine, 5 Speed Manual Transmission, 8' Bed, Ladder Rack, Lift Gate, RPC No. 996

1998 Ford Ranger Pick-Up Truck; Vin No. 1FTYR10U9WUB95003, 174,244 Miles, 6 Cylinder Gasoline Engine, Automatic Transmission, Ladder Rack, 6' Duraline Bed, RPC No. 9812

CONTAINERS, VAN BODY & OFFICE TRAILERS

(4) 8' X 48' Steel Shipping Containers w/ Built In Offices; Each Equipped w/ Storage Area & 8' X 10' Finished Office Area w/ Air Conditioning, Shelving, Electrical & Lights, (2) Located At Auction Site, (2) Located At Location No. 2 And will Be Sold Via Photo **SEE PHOTO**

(3) 8' X 28' Mfg. Unk. Office Trailers; ID No. BKO20220, BKO3355 & BKO3353 - Only 26', All Equipped With Single Axle, Window A/C, Desks, Located at Location 3 & Will Be Sold Via Photo **SEE PHOTO**

32' Mfg. Unk. Fiberglass Panel Single Axle Trailer; ID No. PLG1014, Location 3

(3) 40' Van Body Trailers Consisting of; Fruehauf Model FG6-F2-40; S/N HPS508023, 68,000 GVWR, Location 1, Ohio Body; S/N AXFV 4098, RPC No. 20-627, Location 1, Mfg. Unk.; ID No. 148, Location 3

LOCATION TWO - E&J Trailer 610 Wayne Park Drive, Lockland, Ohio 45215

LOCATION THREE - E&J Trailer 3238 Hill Drive, Sharonville, Ohio 45241

BAND SAW

13" X 18" Hyd-Mech S-20 Series II Mitre Head Horizontal Band Saw; S/N 60297729, 13" X 18" Rectangle, 13" Dia. Round, 12" Dia. 45 Degree Round, 12" X 12" 45 Degree Square, Material Vise, 1" Wide Blade, 20" X 66" Overall Table Area, Coolant, Entry & Exit Roller Conveyor (New 1997) **SEE PHOTO**

IRON WORKER

50 Ton Piranha Model P-50 Hydraulic Power Iron Worker; S/N P5010798, 1-1/2" Round, 1" Square Bar, 50 Ton Bending & Punch End, 5" X 5" X 3/8" Angle, 2-3/4" X 4" X 1/4" Coper Notcher, 13/16" Thru 3/4" Thick Material Punch, 5/8" X 15" Plate Shear, Foot Pedal (New 2007) **SEE PHOTO**

WELDING POSITIONERS

2,500 Lb Aronson Model HD25A Motorized Tilting & Rotating Welding Positioner; S/N 721115, 24" X 24" Approx. Slotted Table, 19" 3-Jaw Chuck **SEE PHOTO**

2,000 Lb Aronson Model HD20A-PTVR2 Motorized Tilting & Rotating Welding Positioner; S/N 831164, 18" Dia. Approx. Slotted Table, 12" 3-Jaw Chuck **SEE PHOTO**

18' Long Mfg. Unk. Motorized Pipe Rotating Welding Positioner; S/N N/A, 18" LX 2" W Roller Table, w/ Miller Millermatic 30-A Spoolmate Gun **SEE PHOTO**

GASOLINE POWER WELDERS

(4) 225 Amp Miller Bobcat 225G CC/CV-SC/DC Welding Power Source / 8,000 Watt Gasoline Power Generators; S/N KG166284 w/ 1,907 Hours, KG099226 w/ 2,192 Hours, KG115713 w/ 1,802 Hours & KG140967 w/ 2,226 Hours

(2) 225 Amp Miller Legend CC AC/DC Welding Power Source / Gasoline Power Generator; S/N KG053853 w/ 3,010 Hours

200 Amp Miller AEAD-200LE CC AC/DC Welding Power Source / Generator Set; S/N N/A w/ 1,877 Hours

TIG, MIG & ARC WELDERS & PLASMA CUTTERS

(3) 450 Amp Miller Deltaweld 451 CV DC Arc Welding Power Sources; S/N KE660074, KE656879, KE661829, Miller S-60 & 70 Series 24V Wire Feeds

350 Amp Miller Syncrowave 350 CC AC/DC Arc Welding Power Source; S/N JK567694, Miller Coolmate 3, Tig Leads

(4) 300 Amp Miller SRH-333 CC DC Arc Welding Power Sources

(4) 300 Amp Miller Model SRH-303 DC Arc Welding Power Sources

(7) 250 Amp Miller Dialarc 250 AC/DC CC AC/DC Arc Welding Power Sources

250 Amp Miller Dialarc HF CC AC/DC Arc Welding Power Source

200 Amp Miller Maxstar 200 Tig / Stick Welder

200 Amp Sure Weld Model DRH 222A DC Arc Welder

150 Amp Miller Maxstar 150S Tig / Stick Welder; S/N LE030276M

60 Amp Hypertherm Powermax 1000 Plasma Cutting System; S/N 1000-003825

WELDING ACCESSORIES

Large Quantity Welding Accessories Consisting of; Aercoly Model WA-1000C Weld Air Portable Fume Collector; S/N 31132, (5) Phoenix Dryrod Model 160 Electrode Stabilizing Ovens w/ 100- 500 Degree Temp Range, Heavy Duty Steel Welding Tables to 4' X 16', Welding Curtains, Welding Leads of All Types, Welding Supplies, Torch Tips, Guns, Nozzles & Related, (15) Cutting / Brazing Torch Sets w/ Tanks & Carriers, Aircro Radiograph Cutting Machine Head, Acetylene Cutting Sets, Acetylene Cutting Attachments Including Hoses, Gages, Torches, (25) Cutting Outfit Tank Carts, Huge Quantity Related Welding Equipment Including Abrasives, Gloves, Helmets, Goggles, Curtains & Large Quantity of Other Related Items

LIFT TRUCKS & RELATED

8,000 Lb Hyster Model H80E Solid Pneumatic Tire LP Gas Lift Truck; S/N D005D01952E, 3-Stage Mast, 167" Lift Height, Side Shift

2,500 Lb Clark Model TM25 Three-Wheel Electric Lift Truck; S/N TM247-0580-8990FB, 3-Stage Mast, 186" Lift Height, Side Shift, 36-Volt Hobart Charger

8,000 Lb Caldwell Model FB80 Lift Truck Boom; S/N 02095

10' & 6' Fork Extension Sets

MANLIFTS

(2) Workforce Model XLT CAT 23 Electric Manlifts; S/N CAT 23-0833, 15364-12RGAU, 23' Max Lift Height, 300 Lb Max Weight, 26" X 26" Platform **SEE PHOTO**

GENIE & SUMNER MATERIAL LIFTS

(11) Genie Superlift Aluminum Frame Cable Type Material Lifts; (6) Model SL-18 w/ 18' Platform Height & 650 Lb Max Load, (2) Model SL-20 w/ 20' Platform Height & 800 Lb Max Load, (1) Model SL-24 w/ 24' Platform Height & 650 Lb Load, (1) Model SL-25 w/ 25' Lift Height & 800 Lb Max Load, (1) Model N/A w/ 12' Lift Height & 350 Lb Max Load

ONLY SELECT MAJOR ITEMS WILL BE OFFERED ONLINE



(4) 8' X 48' Steel Shipping Containers w/ Built In Offices

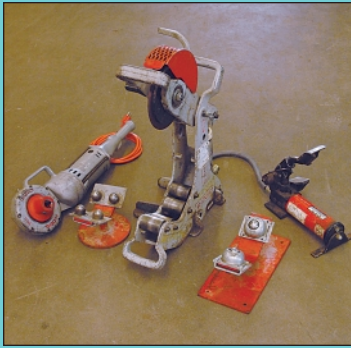


(3) 8' X 28' Mfg. Unk. Office Trailers



Panasonic TVA200 Hybrid 1P-PBX Phone System

NEW 2009



(5) Ridgid Portable Power Pipe Threading & Cutting Sets



(3) Victaulic Model VE272FS Hydraulic Pipe Roll Grooving Machines



Partial View Core Drilling Machines and Diamond Bits



Large Quantity of Pipe Wrenches from 8" - 60"



(3) Wacker Gasoline Powered Tampers

Sumner Model 2210 Aluminum Frame Cable Type Material Lift; S/N N/A, 10' Lift Height, 300 Lb Max Load

(3) **Sumner Model Z150 Roust-A-Bout Material Lifts;** S/N CS2000-389, CS2000-3090, CS2000-2102, 15' Lift Height, 2,000 Lb Max Load

(2) **Sumner Model Z100 Roust-A-Bout Material Lifts;** S/N CS20000917, CS20000805, 15' Lift Height, 2,000 Lb Max Load

SCAFFOLDING

(100+) Sections of Safety Type Scaffolding Consisting of; (34) 61" X 61" Uprights, (15) 37" X 62" Uprights, (4) 50" X 62" Uprights, (16) 79" X 38" Uprights, (90) Cross Bars, (30) 19" X 84" Aluminum Walk Boards, Scaffolding Casters & Related

STEP & EXTENSION LADDERS

Step & Extension Ladders Consisting of; (13) 12' Fiberglass Step Ladders, (40) 10' Fiberglass Step Ladders, (47) 8' Fiberglass Step Ladders, (18) 6' Fiberglass Step Ladders, 14' Fiberglass Step Ladder, (3) 24' Extension Ladders, 21' Extension Ladder, 32' Extension Ladder

JOB SITE TOOLBOXES

(70) **Knack, Greenlee, Dayton Portable Job Site Toolboxes;** Styles Include Chest Type, Swing Open and Door Type Cabinets, Piano Boxes, Rolling Work Benches & Others, Some Late Model

(7) Various Weather Guard Truck Boxes

PIPE EQUIPMENT

(3) **Victaulic Model VE272FS Hydraulic Pipe Roll Grooving Machines** SEE PHOTO

(2) **Ridgid Model 918 Hydraulic Pipe Roll Grooving Machines**

(5) **Ridgid Portable Power Pipe Threading & Cutting Sets Each Including;** Ridgid Model 258 Power Pipe Cutter, Ridgid Model 700 Hand Held Power Drive Heads, Ridgid Model F32 Hydraulic Foot Pump, (2) V-Block Stands, Portable Case, Dies SEE PHOTO

(7) **Ridgid Model 300 Power Pipe Threading Machines**

(3) **Ridgid Model 535 Power Pipe Threading Machines**

(2) **Ridgid Model 122 Copper Pipe Cutting & Prep Machines**

Large Quantity of Ridgid Die Heads From 1/3" to 2-1/2"

(100) Ridgid Pipe Tri-Stands w/ Chain Vises

(100) Various Roller Type Pipe Stands

Other Related Pipe Threading Equipment

Consisting of; (4) Ridgid Model HC450 Hole Cutting Tools, T-Drill Model T-60 Hole Cutting Tool, Ridgid Model 320-E Cordless Pressing Tool, (20) Ridgid Ratchet Type Pipe Threaders w/ Dies, Large Quantity of Ridgid C-Frame Manual Pipe Cutters, Large Quantity of Ridgid Adjustable Die Heads, (12) Ridgid Model 318 Oilers, (7) Pipe Carts, (25) Pipe Clamps, Threading Dies & Many Other Related Items

CORE DRILLS

Milwaukee Model #120 Dymo-Rig Free Standing Core Drill

Hilti Model DD200 Free Standing DD100 Core Drill

(4) **Hand Held Dry Type Core Drills Including;** (1) Hilti Model DD100, (2) Diamond Products Core Bore Units & Cardi Talpa IMU Core Drill

Large Quantity of Wet & Dry Diamond Core Drill Bits

POWER TOOLS

(70) Portable Band Saws By Milwaukee & Porter Cable

(20) 14" Abrasive Cut-Off Saws By Milwaukee, Dewalt, Porter Cable & Others

(35) 4 1/2" & 7" Angle Grinders By B&D, Dewalt, Makita, Milwaukee & Others

(50) 3/8" - 1/2" Electric Drills By Porter Cable, Milwaukee, Dewalt & Others

(66) Various Size Hammer Drills By Milwaukee, Bosch, Hilti & Dewalt

(50) Cordless Hand Drills By Bosch, Milwaukee, Ridgid & Dewalt

(50) Sawzall Type Reciprocating Saws By Milwaukee, Porter Cable, Dewalt & B&D; Including (10) Cordless Units

(5) Magnetic Base Drills, By Milwaukee, Hougén & Champion

Huge Quantity Other Power Tools Consisting of; (3) 7" & 8" Circular Saws By Milwaukee & Skilsaw, (3) 12" Gas Powered Abrasive Saws By Bosch & Stihl, (3) Bosch Electric Jack Hammers, (15) 1/2" Milwaukee Right Angle Drills, (6) Dewalt Impact Wrenches, (3) Master Hot Air Guns, (4) Husky Pneumatic Nailers, (3) Hilti Model DX351 & DX451 Fastening Systems, Ridgid Cordless Impact Driver, Porter Cable Plunge Router, Black & Decker Mitre Saw & Many Other Related Items

MISC. CONTRACTORS TOOLS
GME 8'H X 8'W X 26" - 40" Expandable Aluminum Trench Box

Large Quantity of Combination Wrenches from 1/4" - 2-3/4"

Large Quantity of Pipe Wrenches from 8" - 60" SEE PHOTO

(27) 1 Ton Harrington Manual Chain Hoists

(40) Ratchet Type Come-A-Longs

(4) **Pipe Fusion Machines Including;** (2) McElroy No. 14 Pitbull, (1) Ensure & (1) Enfield

Yamaha YG4000D Portable Gasoline Generator

10 HP Coleman Powermatic 6250 Portable Gasoline Generator

(3) **Wacker Gasoline Powered Tampers** SEE PHOTO

(10) **Portable Air Compressors to 5 HP**

Survey Equipment Consisting of; Spectra Precision Model 1280 Dialgrade Underground Laser System, Topcon Model AF-67 Auto Level, (3) Topcon Model AT-22 Auto Levels, (5) Pacific Laser Systems Model PLS5 Plumb-Level-Square Units, (2) Dewalt Model DW082 Laser Plumb Bob, (4) Pole Measuring Tools & Other Related Items

Huge Quantity Other Contractors Tools & Job Site Equipment Including; (5) Gas Power Water Pumps to 5-1/2 HP (5) Kerosene Torpedo Forced Air Heaters to 155,000 BTU, (10) Manual Tube Benders From 1/2" OD - 7/8" OD, (30) Steel Freon Tanks, Hydrotest Hydraulic Testers, 10 HP Promax Amprone Model RG54 Freon Recovery System, (4) Temperature /

Humidity Meters, (3) Voltage & Current Detectors, (10) Portable Lights, (8) Sump Pumps, (15) Portable Heaters, (5) Bottle Jacks, (20) Insulated Water Coolers, (30) Pair Slush Boots Size 11-14, (2) Thermo Flo Oz Saver Lights, Large Quantity of Chains & Pad Locks, (100) Cable & Nylon Choker Slings, Ropes, Extension Cords, Cables Slings, Rain Gear, Shackles to 2", Rags, Weed Eater, Blower, C-Clamps, Vises, Ratchet Sets, Driver Sets, Tarps, Safety Harnesses, Dollies, Flashlights Taps, Nails, Screws, Bolts, Nuts, Grinding Wheels, Cut-Off Wheels, Air Hoses, Carts, Safety Boot Covers, Pry Bars, Levels, Tape Measures, Hammers, Brushes, Wheel Brushes, T-Square, Files, Orange Safety Vests, First Aid Kits, Caulk Guns, Saws, Screw Drivers, Drill Bits, Hard Hats, Tin Snips, Solder Equipment, Caulk, Pipe Brushes, Hole Saw Kits, Hole Saws, Large Quantity of Long Handle Tools Including; Shovels, Rakes, Brooms, Post Hole Diggers, Sledge Hammers, Spades, Pikes & Hoes, Layout Tables, Foreman Desks, HD Steel Work Tables, Pressure Gauges & Huge Quantities of Other Related Items

SHOP EQUIPMENT

Large Quantity Shop Equipment Consisting of; (30) Sections Various Size Pallet Rack In Sizes to 42" D X 108" W X 144" H, 18" Wide X 40' Long Free Standing Bolt Together Open End Tubular Frame Shed, 216" X 32" X 120" Fabricated Steel Cantilever Rack, 17" Delta Model 17-959L Floor Drill, 3/4 HP Milwaukee Double End Bench Grinder, 4.5 HP Bolens 21" Rear Bag Mulching Lawn Mower, (6) Wheel Barrows, (2) Pneumatic Tire Wagon Carts, (6) Drum Spill Pallets, (2) Summer Grasshopper Carts, (6) Pallet Trucks, 7" Portable Steps, (2) 4' Portable Steps, 3' Portable Steps, (4) 60 Gal Cap. Flammable Liquid Cabinets, (20) 5 Gal Oily Rag Cans, (60) Fire Extinguishers, (10) Pedestal Fans, (10) Box Fans, (2) 42" Dia. Floor Fans, (8) Shop Vacs, (10) Gin Poles, Material Carts, 2-Door Cabinets, Pigeon Hole Shelves, Pipe Test Pressure Plates, Furniture Dolly, Test Bladders,

INVENTORY

Large Quantity Mechanical Contractors Inventory & Material Consisting of; Large Quantity of Duct Work Including Pipe, Vents, Louvers & Related, Small Quantity of Mild Steel, Stainless & Aluminum Pipe & Structural Inventory, Pipe Fittings, Hardware, Refrigerant Lines, Condensers & Related

OFFICE EQUIPMENT

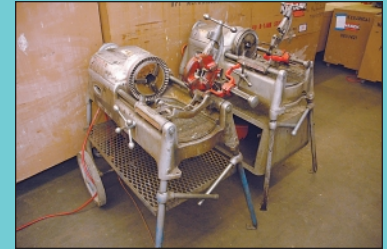
Late Model Office Equipment & Furniture Consisting of; HP & Dell PCs, Open ID Card Printer, Brother Fax Machine, Type Writer, Various Modular Cubicles, Desks, Tables, Chairs, File Cabinets of All Types, Book Shelves, Blueprint Files, Cabinets, Folding Chairs, Tables & Related Items

PHONE SYSTEM

Panasonic TVA200 Hybrid 1P-PBX Phone System; Voice Processing System, Bogen Pro Hold Stereo, (10) Panasonic XDP Office Phones (New 2009) SEE PHOTO



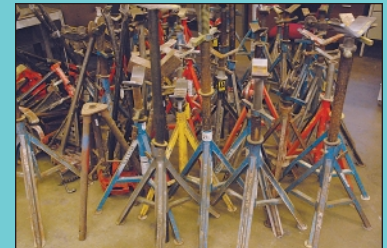
Partial View Ridgid and Victaulic Pipe Groovers



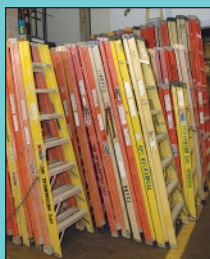
Partial View Ridgid 300 and 535 Model Pipe Threaders



Partial View (27) Chain Hoists and (40) Ratchet Type Come-A-Longs



Partial View (100+) Pipe Stands and (100+) Tri-Stands



Partial View (120+) Fiberglass Step and Extension Ladders



(3) Bosch Electric Jack Hammers



Partial View Huge Quantity Power and Hand Tools



Partial View Huge Quantity Small Contractors Tools and Supplies



Partial View Refrigeration Equipment

PUBLIC AUCTION

LARGE MECHANICAL CONTRACTOR 100'S OF LOTS INCLUDING EQUIPMENT, TRUCKS, TOOLS, WELDERS, SUPPLIES & RELATED
 Ordered Sold by the Assignee Leonard Z. Eppel



5310 Lester Road – Cincinnati, Ohio 45213
 10 Miles North of Downtown Cincinnati off I-71

SALE DATE:
Tuesday, Sept. 28th
STARTING: 9:00 AM

INSPECTION:
 Monday, September 27th
 10:00 AM to 4:00 PM



Cincinnati Industrial Auctioneers Inc.

2020 DUNLAP ST., CINCINNATI, OHIO 45214
 PHONE (513) 241-9701 / FAX (513) 241-6760
 INTERNET: cia-auction.com



Late Model Fabricating Machinery



Huge Quantity Welding Equipment



Large Vehicle Fleet



Huge Quantity Power and Hand Tools

FIRST CLASS MAIL!

PRE-SORT
 FIRST CLASS
 U.S. POSTAGE
PAID
 CINCINNATI, OHIO
 PERMIT NO. 3593

Important Mail

TO BE DIRECTED TO THE ATTENTION
 OF EXECUTIVE PERSONNEL



TUESDAY, SEPTEMBER 28TH

PUBLIC AUCTION

Ordered Sold by the Assignee Leonard Z. Eppel



5310 Lester Road
 Cincinnati, Ohio 45213

10 Miles North of Downtown Cincinnati off I-71

IMPORTANT NOTICE:

Although information has been obtained from sources deemed reliable, the auctioneer makes no warranty or guarantee, expressed or implied, as to the accuracy of the information herein contained. It is for this reason that buyers should avail themselves of the opportunity to make inspection prior to the sale. This brochure is intended to provide general information of the equipment being offered and is subject to errors, omissions, additions or deletions. Please check with the Auctioneer's Office for a final listing. Items offered may or may not necessarily be sold as described and/or photographed in this brochure.

MAIL BIDS ACCEPTED WITH A 25% DEPOSIT

DIRECTIONS

Directions From Southbound I-71: Exit Ridge / Kennedy Ave. No. 8 Follow to light at end of exit ramp and Turn Left on Highland Ave.. Proceed 3/4 Mile on Highland to Lester Rd. Turn Right on Lester Rd. and Proceed 1/4 Mile to Auction Site on Left. Watch for Auction Signs and Parking.

Directions From Northbound I-71: Exit Ridge Ave. North No. 8C and Proceed 1/2 Mile North on Ridge Ave. to Light at Highland Ave. Turn Left on Highland Ave. and Proceed 1/2 Mile to Lester Rd. Turn Right on Lester Rd. and Proceed 1/4 Mile to Auction Site on Left. Watch for Auction Signs and Parking.

AUCTIONEERS

Cincinnati Industrial Auctioneers, Inc. - License No. 63-1983-10439
 Jeffrey L. Luggen - License No. 57-1983-33789
 Jerome A. Luggen - License No. 52-1983-33799
 Jeffrey M. Luggen - License No. 2010-0000-26
 Joseph M. Luggen - License No. 2010-0000-19
 John F. Rome - License No. 57-2000-84249



TERMS OF SALE

All equipment described herein will be sold "as is", "where is" to the highest bidder or bidders for cash in accordance with our regular terms and conditions of sale. Unless other satisfactory arrangements are made, a **25% deposit** in cash, certified or cashier's check payable to Cincinnati Industrial Auctioneers, Inc., **is required on all purchases.** Firm and personal checks accepted only if accompanied by a letter from your bank guaranteeing your funds. All sales are subject to state and/or local taxes unless a signed exemption form is presented at the time of purchase. **All balances are due at the conclusion of the sale.** No merchandise may be removed while the sale is in progress. **All bidders must comply with our Standard Terms of Sale,** copies of which will be available at the sale site or can be obtained from our website.

12% ONSITE BUYER'S PREMIUM
15% ONLINE BUYER'S PREMIUM

SALE UNDER THE MANAGEMENT OF

Cincinnati Industrial Auctioneers Inc.

2020 DUNLAP ST., CINCINNATI, OHIO 45214 PHONE (513) 241-9701 / FAX (513) 241-6760
 INTERNET: cia-auction.com for printable brochures, catalog, terms and proxy-bidding

SALE DATE
Tuesday,
Sept. 28th
9:00 AM

