

**MULTI-MILLION DOLLAR VALUATION ASSETS FROM
OIL AND GAS EXPLORATION COMPANY INCLUDING
DRILLING AND SWAB RIGS, EXCAVATION EQUIPMENT**

PUBLIC AUCTION

Live Online Bidding
To Become a Qualified Bidder on the Internet
See Instructions on Page 4
Powered by: **proxibid**

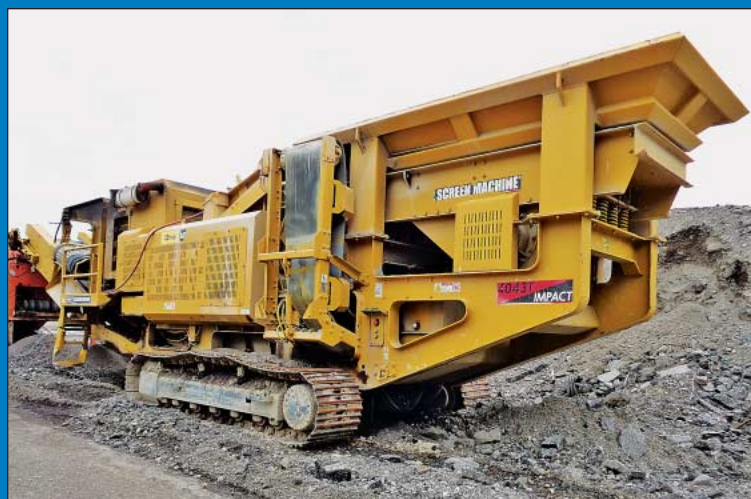
**By Order of United States Bankruptcy Court For Western District of
Pennsylvania Case NO.'s 12-10057-TPA and 12-10058-TPA, Guy C. Fustine, Chapter 11 Trustee
Surplus Assets to The Continuing Operations Of**

OZ GAS, LTD / GREAT PLAINS EXPLORATION, LLC
225 Swede Road – Tidioute, Pennsylvania 16531

Additional Equipment Located in Painesville, Ohio and Winifred, Montana

SALE DATE: THURSDAY, AUGUST 13, STARTING AT 10:00 AM (EST)

**INSPECTION ALL LOCATIONS: WEDNESDAY, AUGUST 12TH, FROM 8:00 AM TO 4:00 PM
or by Appointment – Contact John Rome 513-477-6407**



Sale Under The Management Of

CINCINNATI INDUSTRIAL AUCTIONEERS

auctioneers | appraisers | since 1961 | cia-auction.com | info@cia-auction.com
2020 Dunlap St., Cincinnati, Ohio 45214 Phone 513-241-9701 Fax 513-241-6760



TIDIOUTE, PENNSYLVANIA EQUIPMENT



768 HOURS

2006 Atlas Copco Model T2H-750-HR2 Air / Fluid Drilling Rig on 2006 International Tandem Axle Model 7600 Drill Rig Truck



Alternate View of 2006 Atlas Copco Drill Rig

Pennsylvania Location:
225 Swede Road, Tidioute, PA 16531



6,931 HOURS

2010 Dickerson Truck Mounted Hydraulic Service Rig on 2008 Chevy Model C5500 4-Wheel Drive Truck



329 HOURS

540 HP Ingersoll Rand Model XHP1170 Skid Type Air Compressor

DRILLING AND SERVICE RIGS

2006 Atlas Copco Model T2H-750-HR2 Air / Fluid Drilling Rig on 2006 International Tandem Axle Model 7600 Drill Rig Truck; S/N 21055, 1,000' Drill Depth, Fluid Pump, Compressor, Powered by Truck PTO, 768 Hours on Drill Rig, 315 Hours on Compressor **SEE PHOTO**

> 2006 International Tandem Axle Model 7600 Drill Rig Truck; VIN# 1HTWYSB177J415698, 10-Speed Eaton Transmission, Cat C-11 Engine, 400 HP, 28,529 Hours **SEE PHOTO**

2010 Dickerson Truck Mounted Hydraulic Service Rig on 2008 Chevy Model C5500 4-Wheel Drive Truck; Hook Load 10,000 Lb. Bare Drum Single Line Pull, 8-5/8" Drum Cove Diameter, Mast Rating 6 Square Foot X 5 Square Foot, 35,000 Lb. 46' Pole **SEE PHOTO**

> 2008 Chevy Model C5500 4-Wheel Drive Truck; VIN# 1GBE5C3909F400318, Duramax Diesel, Automatic Transmission, 6,931 Miles **SEE PHOTO**

AIR COMPRESSOR SYSTEM

540 HP Ingersoll Rand Model XHP1170 Skid Type Air Compressor; Powered by

Caterpillar Model C-15 Engine, 329 Hours **SEE PHOTO**

> 36' Stanton Dynamics Model DMF36 Step Deck Trailer; VIN# 1S9SD37238S834112, with 1,000 Gallon Fuel Tank

WINCH TRUCK

2006 Mack Winch / Vacuum Tandem Axle Oilfield Road Tractor; VIN# 1M2AG10C57M060418, with Dickerson Model HP70/HXL400 Winch-Vacuum Body; S/N 4697, 460 HP Mack Engine, 13-Speed Maxitorque Transmission, 159,229 Miles **SEE PHOTO**

EXCAVATORS

Komatsu Model PC50MR-2 Rubber Track Excavator; S/N 7942, 4,493 Hours **SEE PHOTO**

Caterpillar Model 308D-CR Excavator; S/N CAT0308DGFY00047, 955 Hours **SEE PHOTO**

Komatsu Model PC27MR-3 Rubber Track Excavator; S/N 20094, 60" Wide Blade, 706 Hours **SEE PHOTO**

SKID STEER

(2) Case Model 445-CT Incline Rubber Track Skid Steer; S/N N7M458832 (460 Hours), S/N N7M458819 (794 Hours), 81" Wide Bucket **SEE PHOTO**



2006 Mack Winch / Vacuum Tandem Axle Oilfield Road Tractor



Caterpillar Model 308D-CR Excavator



Komatsu Model PC50MR-2 Rubber Track Excavator



Komatsu Model PC27MR-3 Rubber Track Excavator

PICK-UP TRUCKS

2013 Ford F350 XL Super Duty 4-Wheel Drive Extended Cab Pick-Up Truck; VIN# 1FT7X3B6DEB20329, Automatic Transmission, 6.2 Liter Gas Engine, 41,807 Miles

2010 Ford F250 XL Super Duty 4-Wheel Drive Pick-Up Truck; VIN# 1FTNF2B57AEA62931, Automatic Transmission, 5.4 Liter Gas Engine, Snow Plow Hook-Up, Front Winch, 62,921 Miles

2009 Ford F250 4-Wheel Drive Pick-Up Truck; VIN# 1FTNF21569EA39850, Automatic Transmission, 5.4 Liter Gas Engine, 98,727 Miles

2006 Ford F250 4-Wheel Drive Extended Cab Pick-Up Truck; VIN# 1FTSX21P06EA72551, Automatic Transmission, 6.0 Liter Powerstroke Diesel Engine, 113,377 Miles

PERSONNEL UTILITY VEHICLES

Kawasaki 4-Wheel Drive Diesel Power Single Seat Utility Vehicle with Work Bed; 503 Hours

Kawasaki 4-Wheel Drive Model 3010 Two Seat Gas Power Utility Vehicle; 693 Hours

Kawasaki 4-Wheel Drive Model 3010 Two Seat Diesel Power Utility Vehicle; 1,020 Hours

Kawasaki 4-Wheel Drive Model 3010 Single Seat Gas Power Utility Vehicle; 681 Hours
(2) Honda Forman ES 4-Wheel Drive ATVs

MISCELLANEOUS EQUIPMENT

Bandit Model 254 Tandem Axle Pull-Behind Wood Chipper; S/N 001650, 6-Cylinder Cummins Engine, Pintle Hitch, Electric Brakes, 163 Hour

SEE PHOTO

Bandit Model 250XP Wood Chipper; S/N 14390, 3-Point Hitch, PTO Drivers

Knife Source Model KSKG-53 Wood Chipper Knife Grinder; S/N 126

5 Ton X 35' Span (Approx.) Excel Single Grinder Top Running Crane; S/N 5800

(2) 96" Wide Snow Plow Attachment by Fisher and Boss

TRAILERS

2008 Stanton Dynamics Model BTR43 Step Deck Tandem Axle Beaver Tail Trailer; VIN 1S9SD44248S834162, 96" X 10' Upper and 96" x 28' Upper and Lower Decks

SEE PHOTO

2008 Dragon Products 130 Barrel Tandem Axle Tanker Trailer; VIN

IUNST42298L063922, 70,000 GVWR
SEE PHOTO

Dickerson Model TLB-T50 Tandem Axle Step Deck Roller Tail Trailer; S/N 940TLV47R033635, 96" X 11' Upper Deck, 96" X 25' Lower Deck

TRACTOR

John Deer Model 4005 4-Wheel Drive Tractor; S/N LV4005G200112, with Model 3000CX Front End Loader, 3 Point Hitch, Live PTO, 3-Speed Transmission, 298 Hours

LIFT TRUCK

7,000 Lb. Toyota Model 7FDU35 Diesel Fuel Pneumatic Tire Lift Truck; S/N 62106, 3-Stage Mast, 238" Lift Height, 105" Mast, Side Shift, 261 Hours

SEE PHOTO

ROUGH SAWED LUMBER

Large Offering of Premium Rough Sawed Red Oak, Beech, Ash, Maple, Locust, Hickory, Pine Lumber - This Lumber is Stickered Stacked in a Dry Controlled Building. This Lumber Covers Approx. 2,400 Square Feet of Floor Space at 14' High. It Has Been Estimated That There is Approx. 10,500 Pieces of Red Oak, Beech, Ash, Maple, Locust, Hickory, Pine Approx. 50% Being Red Oak Lumber with an Average Dimension of 10' Long X 8' Wide X 1" Thick.



2008 Dragon Products 130 Barrel Tandem Axle Tanker Trailer



2008 Stanton Dynamics Model BTR43 Step Deck Tandem Axle Beaver Tail Trailer



(6) Kawasaki Side by Sides and ATV's



(4) Ford 4-Wheel Drive Pick-Up Trucks



Large Offering of Premium Rough Sawed Red Oak, Beech, Ash, Maple, Locust, Hickory, Pine Lumber



7,000 Lb. Toyota Model 7FDU35 Diesel Fuel Pneumatic Tire Lift Truck



PAINESVILLE, OHIO EQUIPMENT



2007 Screen Machine Track Mounted Model 4043T Impact Crusher



540 HP Ingersoll Rand Model XHP1170 Skip Type Air Compressor



2008 Terex Finley Model 683 "Supertrak" Tracked Screening Plant



McCloskey Model 516RE Portable Trommel Screener



250 HP Ariel Model JGQ/2 Air Booster

Ohio Location:

220 Blackbrook Rd., Painesville, OH

SCREENING AND CRUSHING EQUIPMENT

McCloskey Model 516RE Portable Trommel Screener; S/N 12594, 130 HP Caterpillar Power Plant, 5' X 16' Trommel Screen, Hopper 6.4 Cubic Yards, 35,900 Lb. Weight **SEE PHOTO**

2008 Terex Finley Model 683 "Supertrak" Tracked Screening Plant; S/N 532-0066, 100 HP Deutz Engine, 12" Grid Opening, Feed with Wing Plates 13'11", Feed Height 11'4", Hopper Capacity 9.16 Cubic Yards, Main Conveyor 39", Hydraulic Drive, Belt Speed 302' Per Minute **SEE PHOTO**

2007 Screen Machine Track Mounted Model 4043T Impact Crusher; S/N D4043T-1-JG2035, 300 HP, Cat C-9 Engine, Capacity 300 TN/H, 40" X 43" Shaft Impactor **SEE PHOTO**

AIR COMPRESSOR SYSTEM

540 HP Ingersoll Rand Model XHP1170 Skip Type Air Compressor; S/N 378637UKQB78, Powered by Caterpillar Model C-15 Engine; S/N JRE02784 **SEE PHOTO**

250 HP Ariel Model JGQ/2 Air Booster; S/N F-24930, Powered by Caterpillar Model C-7 Engine, 291 Hours **SEE PHOTO**

CRAWLER DOZER

2007 Caterpillar Model D6RXL Series III Crawler Dozer; S/N CAT00D6REHGJB00919, Six-Way Blade, Winch, 2,809 Hours **SEE PHOTO**

EXCAVATORS

2007 Caterpillar Model 320CL Excavator; S/N CAT0320CCPAB07159, 6,970 Hours **SEE PHOTO**

ROAD GRADER

Nor-Am Weiler Model 65E Road Grader; S/N 65ET-9489, Cummins Diesel, Front Ripper

WEBCAST BIDDER INSTRUCTIONS

- All Internet bidders must register for this auction at www.proxibid.com at least 48-Hours Prior to the Sale Date, **if you do not you will not be approved.**
- All Internet bidders must Post a Deposit of Approx. 25% of Your Planned Spending Budget or \$5,000.00 Minimum with Cincinnati Industrial Auctioneers in Order to be approved to Bid. Those who do Not Post the Deposit Will Not be Approved. **Period.**

Live Online Bidding Powered By: **proxibid**

TO BE SOLD VIA PHOTO AT TIDIOUTE, PA



2,809 HOURS

2007 Caterpillar Model D6RXL Series III Crawler Dozer



2007 Caterpillar Model 320CL Excavator



Nor-Am Weiler Model 65E Road Grader

CRANE TRUCK

2000 Sterling Model LT7501 Crane Truck; VIN 1FZNAJ3321AK40734, Road Ranger RT/RTO-8LL Transmission, 205 HP Cat Model 3120 Engine, 58,000 GVWR, 56,405 Miles, Terek Model BT4792 Crane; S/N 49006011398, Up to 49,000 Lb. Lifting, 96" X 20' Steel Bed, Outriggers **SEE PHOTO**

Deck, 14' Over Axles ****Subject to Withdraw**** **SEE PHOTO**

2003 - 35 Ton Talbert Tandem-Axle Detachable Gooseneck Lowboy Trailer; VIN# 40FS0442331022032, 102" Wide X 24' Lower Deck, 8' Over Axles ****Subject to Withdraw**** **SEE PHOTO**

TRAILERS

2008 - 50 Ton Talbert Tri-Axle Detachable Gooseneck Lowboy Trailer; VIN# 40FS0533581028701, 102" Wide X 24' Lower

Dickerson Model D35TLD Tandem Axle Trailer; VIN# 1D935TLD57R033612
48' Fontaine Tandem Axle Flat Bed Trailer; ID # 51520414



2000 Sterling Model LT7501 Crane Truck

IMPORTANT AUCTION NOTICE

Auction to be conducted at Tidioute, PA location. Items located at Painesville, Ohio & Winifred, Montana will be sold via photo at the Tidioute, Pennsylvania location.



2003 - 35 Ton Talbert Tandem-Axle Detachable Gooseneck Lowboy Trailer ****Subject to Withdraw****



2008 - 50 Ton Talbert Tri-Axle Detachable Gooseneck Lowboy Trailer ****Subject to Withdraw****



WINIFRED, MONTANA EQUIPMENT



585 HOURS

2008 Caterpillar Model D6TXL Incline Track Crawler Dozer



8" Continental Easco Model D-375 Skid Mounted Mud Pump

Montana Location:
138 Rose Creek Rd., Winifred, MT

CRAWLER DOZER

2008 Caterpillar Model D6TXL Incline Track Crawler Dozer; S/N CAT00D6TELAY00881, C-9 Engine Arrangement No. 3015768; S/N THK14952, Transmission Arrangement No. 2201429, CAT Model PACCAR Winch; S/N 0704869, 585 HRS **SEE PHOTO**

EXCAVATORS

2008 Caterpillar Model 330D Excavator; S/N CAT0330DJMWP02514, Cat Model C9 Engine, THXI Engine Family No. 8CPXL08.8ES5K, with CAT 330 B Quick Disconnect Attachment; S/N PGF22138, 84" Bucket on Machine with 24" and 42" Extra Buckets, 662 HRS. **SEE PHOTO**

Caterpillar Model 304C/CR Rubber Track Excavator; S/N CAT0304CEFPK03928, 16" Wide Bucket, 77" Wide Blade, 43 HP Mitsubishi Model 7MVXL02.SAAA Engine, Heat and A/C Cab, with 16" and 22" Extra Buckets **SEE PHOTO**

SERVICE RIG

Dickerson Model SR60 Truck Mounted Service Rig on 2006 Mack Granite Model CV713 4-Wheel Drive Truck; S/N 4499, Caterpillar Model C7 Acert Engine, Eaton Fuller Model F50-8406A Drive Transmission; S/N G0341288, Mast Rating: 8 5/8" X 10 3/4" at 150,000 lbs. Double Pole Pull-Upper Drum Hook Load: 30,000 lbs. Single Line-Tubing Drum Load: 25,000 lbs. Single Line Pull **SEE PHOTO**

> **2006 Mack Granite Model CV713 4-Wheel Drive Truck;** VIN# 1M2AG11C77M045868, Maxitorque Thirteen Speed Transmission, 427 HP Mack Engine; S/N 6E0514, 9,761 Miles

WINCH TRUCK

2005 Mack "Granite" Oilfield Winch/Vacuum Truck; VIN# 1M2AG10Y76M040715, Dickerson Model MS30 Roller Tail Winch Body; S/N 4502, Maxitorque T318R/L21 Eighteen Speed Transmission, 460 HP Mack Model 5MKKH11.9V71 Engine; S/N 5L0255, (Rear Transmission Seal Leak), 84,651 Miles, 5670 HRS **SEE PHOTO**



Dickerson Model SR60 Truck Mounted Service Rig on 2006 Mack Granite Model CV713 4-Wheel Drive Truck



2005 Mack "Granite" Oilfield Winch/Vacuum Truck



(2) 5,000 Gallon Skid Mounted Tanks



2008 Caterpillar Model 330D Excavator



Caterpillar Model 304C/CR Rubber Track Excavator



2007 Stanton Dynamics Model DT40 "Doghouse" Oilfield Trailer

TRAILERS

2007 Stanton Dynamics Model DT40 "Doghouse" Oilfield Trailer; VIN#

1S9SF41217S834111, 36' Long, 280 GVWR, with Miller Bobcat 10,500 Watt Welder-Generator Set, Steps, Entrance Doors on Both Ends

SEE PHOTO

2007 Stanton Dynamics Model FF34 Tandem Axle Trailer; VIN#

1S93SF325878834110, 96" Wide X 34' Long, (4) Firestone 839 Radials at 445/65R/225/20 PR

SEE PHOTO

2007 Dragon 130 BBL/5960 Gallon Tanker Tandem Axle Trailer; VIN#

1UNST42227L052064

SEE PHOTO

Dickerson Model D45TLD Tandem Axle Equipment Trailer; VIN#

1D945TLDX7R033657, 96"

Wide X 40' Long, (4) RLB900 Double Coin Tires at 445/65R/22.5

Dickerson Model TLB50 Tandem Axle Equipment Trailer; S/N

4608, 96" Wide X 40' Long, (4) RLB900 Double Coin Tires

GENERATOR SET

2007 Caterpillar Model D50-45 (45KVA-45KW) Generator Set; S/N CAT00C44KN4D0, CAT Model C4.4 Diesel Engine, ID. 00C44PN4D00606, 33 HRS

SEE PHOTO

> 1,000 Gallon (Approx.) Fabricated Fuel Tank

MUD PUMP

8" Continental Easco Model D-375 Skid Mounted Mud Pump; S/N 1953, with 540 HP Caterpillar Model C15 Engine; S/N JRE02339, 2774 HRS

SEE PHOTO

TRACTOR

John Deere Model 4005

4-Wheel Drive Tractor; S/N LV40050100688, 41 HP Engine, 3-Speed Manual Transmission, Live PTO, 3 Pt. Hitch, 189 HRS. with 72" Woods Model SU172 BT Gill Pulverizer, 48" Forks, 60" Woods Bush Hog

SEE PHOTO

MISCELLANEOUS EQUIPMENT

(150) Joints of 4" Diameter X 30' Long Thick Wall Drill Stem Pipe

SEE PHOTO

(2) 5,000 Gallon Skid Mounted Tanks; S/Ns 13691 and 13692, 102" Diameter X 30' Long

SEE PHOTO

Oilfield Skid Mounted Pipe Tub, 103" Wide X 50' Long X 24" Deep

10% ONSITE BUYERS PREMIUM

13% ONLINE BUYERS PREMIUM



John Deere Model 4005 4-Wheel Drive Tractor



2007 Caterpillar Model D50-45 (45KVA-45KW) Generator Set



2007 Dragon 130 BBL/5960 Gallon Tanker Tandem Axle Trailer



2007 Stanton Dynamics Model FF34 Tandem Axle Trailer



(150) Joints of 4" Diameter X 30' Long Thick Wall Drill Stem Pipe, (MT 8 and MT 10)

PUBLIC AUCTION

By Order of United States Bankruptcy Court For Western District of Pennsylvania Case NO.'s 12-10057-TPA and 12-10058-TPA, Guy C. Fustine, Chapter 11 Trustee

Surplus Assets to The Continuing Operations Of

OZ GAS, LTD / GREAT PLAINS EXPLORATION, LLC

225 Swede Road – Tidioute, Pennsylvania 16531
120 Miles Northeast of Pittsburgh, PA

SALE DATE:
Thursday, August 13th
STARTING: 10:00 AM (EST)

INSPECTION ALL LOCATIONS:
Wednesday, August 12th 8:00 AM to 4:00 PM (Local Time)
or by Appointment – Contact John Rome 513-477-6407

CINCINNATI INDUSTRIAL AUCTIONEERS
auctioneers | appraisers | since 1961

Contact Information
2020 Dunlap St.
Cincinnati, Ohio 45214
Phone 513-241-9701
Fax 513-241-6760
www.cia-auction.com



Drill, Swab, & Service Rigs



Screen & Crush Equipment



Late Model Cat Equipment



Support Equipment

FIRST CLASS MAIL!

PRE-SORT
FIRST CLASS
U.S. POSTAGE
PAID
CINCINNATI, OHIO
PERMIT NO. 3593

Important Mail

TO BE DIRECTED TO THE ATTENTION OF EXECUTIVE PERSONNEL

THURSDAY, AUGUST 13TH PUBLIC AUCTION

Surplus Assets to The Continuing Operations Of

OZ GAS, LTD / GREAT PLAINS EXPLORATION, LLC

225 Swede Road
Tidioute, Pennsylvania 16531
120 Miles Northeast of Pittsburgh, PA

IMPORTANT NOTICE:

Although information has been obtained from sources deemed reliable, the auctioneer makes no warranty or guarantee, expressed or implied, as to the accuracy of the information herein contained. It is for this reason that buyers should avail themselves of the opportunity to make inspection prior to the sale. This brochure is intended to provide general information of the equipment being offered and is subject to errors, omissions, additions or deletions. Please check with the Auctioneer's Office for a final listing. Items offered may or may not necessarily be sold as described and/or photographed in this brochure.

MAIL BIDS ACCEPTED WITH A 25% DEPOSIT

DIRECTIONS

Live Auction Directions: 225 Swede Rd., Tidioute, PA is approximately 120 miles Northeast of Pittsburgh. From I 80, exit at Rt. 8 (Exit 29) and proceed North on Rt. 8 approximately 35 miles into Titusville. From Titusville, go North onto Enterprise Rd/PA 27 and proceed approximately 4 miles to Tidioute Enterprise Rd. Go Right onto Tidioute Enterprise Rd. and proceed approximately 8 miles to Swede Rd. Go left on Swede and proceed approximately 1 mile to sale site on the right. Watch for auction signs as GPS tracking can be inaccurate.

- Ohio Location: 220 Blackbrook Rd., Painesville, OH
- Montana Location: 138 Rose Creek Rd., Winifred, MT

AUCTIONEERS

Cincinnati Industrial Auctioneers – PA License No. AY002219
Jeffrey L. Luggen – PA License No. AU003274R
Joseph M. Luggen – PA License No. AU005954
John F. Rome – PA License No. AU005357



TERMS OF SALE

All equipment described herein will be sold "as is", "where is" to the highest bidder or bidders for cash in accordance with our regular terms and conditions of sale. Unless other satisfactory arrangements are made, a **25% deposit** in cash, certified or cashier's check payable to Cincinnati Industrial Auctioneers, Inc., is **required on all purchases**. Firm and personal checks accepted only if accompanied by a letter from your bank guaranteeing your funds. All sales are subject to state and/or local taxes unless a signed exemption form is presented at the time of purchase. **All balances are due at the conclusion of the sale.** No merchandise may be removed while the sale is in progress. **All bidders must comply with our Standard Terms of Sale**, copies of which will be available at the sale site or can be obtained from our website.

10% ONSITE BUYER'S PREMIUM
13% ONLINE BUYER'S PREMIUM



Sale Under The Management Of

CINCINNATI INDUSTRIAL AUCTIONEERS

auctioneers | appraisers | since 1961 | cia-auction.com | info@cia-auction.com
2020 Dunlap St., Cincinnati, Ohio 45214 Phone 513-241-9701 Fax 513-241-6760