

**SUPPORT EQUIPMENT FOR LARGE PRINTING AND PACKAGING FACILITY
INCLUDING WOODWARD JOGGER, PAPER SHREDDER, BALERS, LIFT TRUCKS,
PRESS PARTS, 250 HP AIR COMPRESSOR, MAINTENANCE AND SHOP EQUIPMENT**

Bidspotter.com™
See Instructions on Page 2
To Become a Qualified Bidder on the Internet

PUBLIC AUCTION

Plant Closed, Surplus Equipment From



MULTI PACKAGING SOLUTIONS

4025 3rd Parkway – Terre Haute, Indiana 47804

70 Miles West of Indianapolis, IN

SALE DATE: TUESDAY, FEBRUARY 18TH, STARTING AT 9:00 AM

INSPECTION: MONDAY, FEBRUARY 17TH, FROM 10:00 AM TO 4:00 PM



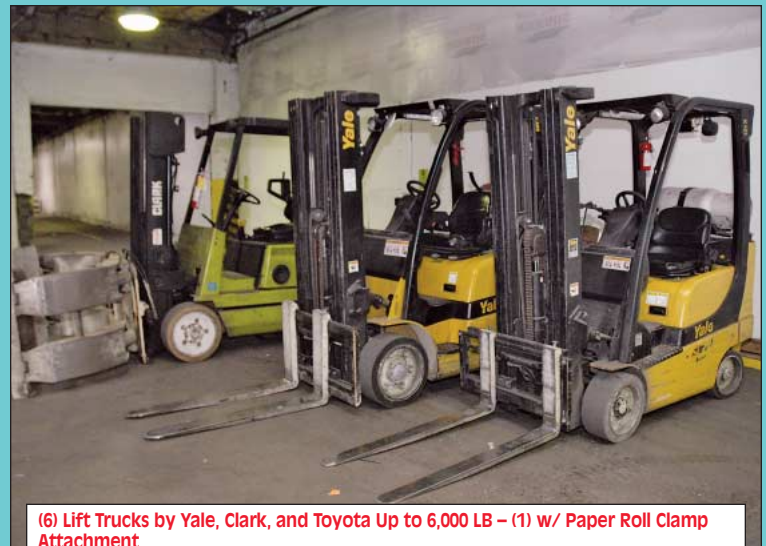
(2) 29" X 36" X Variable" Balemaster Model 4130C-8, Auto-Tye Horizontal Hydraulic Baler



62" Wide Balemaster Model 1250-62" Paper Shredder



44" X 63" Woodward Model S/600 Hydraulic Jogger – Aerator



(6) Lift Trucks by Yale, Clark, and Toyota Up to 6,000 LB – (1) w/ Paper Roll Clamp Attachment



Sale Under The Management Of

CINCINNATI INDUSTRIAL AUCTIONEERS

auctioneers | appraisers | since 1961 | cia-auction.com | info@cia-auction.com

2020 Dunlap St., Cincinnati, Ohio 45214 Phone 513-241-9701 Fax 513-241-6760



42" X 63" Albo Paper System Model Pile Turner PT1500AP Paper Jogger



250 HP Ingersoll-Rand Model SSR-EP250 Cabinet Enclosed Rotary Screw Air Compressor



NEW 2007

30" X 60" IPS Model V-606-HD Vertical Hydraulic Cardboard Baler



NEW 2002

30" X 60" McClain Model E-11HD460 Vertical Hydraulic Cardboard Baler



70" X 54" Nela Tarnes Model Electronic Pneumatic Plate Punch



48" X 63" Just Normlight Proofing Light Table



(2) Engineered Automation of Maine Model FG-24 Mini-ST Tabber



48" HP Designjet 5500 Large Print Copier



NEW 2003

60" T-ROC Equipment Model ABM60-3H Programmable Custom Box Maker

JOGGER/AERATOR /PILE TURNER

44" X 63" Woodward Model S/600 Hydraulic Jogger - Aerator; S/N 9109236WNC, 5,000 Lb. Capacity; 5 HP Hydraulic Pump, 20 HP Blower **SEE PHOTO**

42" X 63" Albo Paper Systems Model Pile Turner PT1500AP Paper Jogger; S/N 50241500, Max Load 3300 LB, Allen Bradley DTAM Micro Control (New 1999) **SEE PHOTO**

28" X 52" Albo Paper Systems Model Pile Turner PT1000AT Paper Jogger; S/N 62941000, Max Load 2200 LB, Allen Bradley MicroView Control (New 2001)

BOX MAKER

60" T-ROC Equipment Model ABM60-3H Programmable Custom Box Maker; S/N 06111203, E710 PLC Control, 1/16" - 15/16" Thickness Capacity, 60" X 48" Infeed / Outfeed Tables (New 2003) **SEE PHOTO**

84" Wide Haire Model GL III-240 CNC Box Gluer; S/N N/A, Batch Counter, Variable Speed, Hot/Cold Glue System, with 2,500 Lb. Advance Lifts, Model P-2536 Scissor Lift Table, with Nordson Model ProBlue 10 Glue System; S/N SA03K05272 **SEE PHOTO**

PRE PRESS EQUIPMENT

48" X 60" Misomex Model MP5000 CNC Folding Carton Samplemaker-Plotter; S/N PAC4SV-5664, Vacuum Table, Three-Tool Head, with Pendant Control

70" X 54" Nela Tarnes Model Electronic Pneumatic Plate Punch; S/N ENP-0135-0823, Digital Control **SEE PHOTO**

48" X 34" Plate Punch (2) 48" Epson Stylus Pro 9900 Plotter/Proofers

48" HP Designjet 5500 Large Print Copier; S/N SG3332402S **SEE PHOTO**

45" Epson Stylus Pro 9600 Plotter/Proofers; S/N D920026154

48" X 63" Just Normlight Proofing Light Table; 8-Drawers **SEE PHOTO**

(2) Printing Air Technologies Model PAT-510sdh Humidifiers

DIE & PAPER CUTTERS

20" X 30" John Thompson Press Style 5 Mechanical Die Cutter; S/N 9924, AB Starter

19" Challenge Model Diamond Paper Cutter; S/N 1730, Size 193, Backgage, Pedal Control



84" Wide Haire Model GL III-240 CNC Box Gluer

BINDERY EQUIPMENT

(2) Engineered Automation of Maine Model FG-24 Mini-ST Tabber; S/N N/A **SEE PHOTO**

(4) ID Technology Model 250 Tabber with Sato Model M-84855c Barcode Printer; S/N 2500903000927, 2501103001044, 2500903000928, and 2500903000924

Hickok Model ARC 2DR Dual Corner Rounder; S/N 16537, w/Rocking Feature

(3) 3M-Matic Model 200a Adjustable Case Sealers (Partial Machines)

PRESS PARTS

Press Parts Including; (20) Various Size Vacuum Pumps, (2) 50 HP Motors, (3) Eltosh Press Control Cabinets, Hose, Duct Work, Wire Spools, Wire Trays

CD CASE GLUING LINES

Esatec Model DT2 1300 Type 251P6TNSICALT CD Case Gluing Line; S/N 30343 (New 2006) **SEE PHOTO**

> (2) Dynatec Model S5N4P122-FS Glue Systems; S/N 218990-A (New 2009) and 153490-D (New 2006)**To Be Sold Separately**

Esatec Model Digistar CD Case Gluing Line; S/N N/A, Siemens Simatic Multi-Panel

> Nordson Series 3900V Glue System; with Nordson Walcom WM416 Adhesive Pattern Control**To Be Sold Separately**

> Nordson Series 3700V Glue System**To Be Sold Separately**

Thiele Engineering Co. Model 8-106 Recip Placer; S/N 6806 (Out of Service)

MISCELLANEOUS MACHINERY

15" X 54" Cincinnati Tray-Top Geared Head Engine Lathe; S/N HT464B, 1.5" Spindle Bore, 9" Swing Over Cross-Slide, 1,470 RPM, Inch Threading, Quick Change Toolpost **SEE PHOTO**

Rigid 300 Electric Pipe Threader with Dies

30 Ton Spartan Model F-300 H-Frame Hydraulic Press; S/N 3330

10" Delta Table Saw with Fence; S/N 64-406, 27" X 70" Table 38" X 96" HD Steel Welding Table with Vise

(2) 8" DE Pedestal Grinder 24" X 24" Dorner 2200 Series Variable Belt Conveyor

WEBCAST BIDDER INSTRUCTIONS

- > All Internet bidders must register for this auction at www.bidspotter.com at least 48-Hours Prior to the Sale Date, **if you do not you will not be approved.**
- > All Internet bidders must Post a Deposit of Approx. 25% of Your Planned Spending Budget or \$5,000.00 Minimum with Cincinnati Industrial Auctioneers in Order to be approved to Bid. Those who do Not Post the Deposit Will Not be Approved. **Period.**
- > There is a 18% Buyer's Premium in Effect for All Online Purchases.
- > We Highly Recommend that Potential Buyers Attend this Auction & Bid Live Onsite. This will give you the Ability to Inspect the Items & Fully Appreciate Their Condition, Along with Saving You 3% of the Buyer's Premium.



No Last Minute Registrations will be accepted. Make Sure to Register & Post Your Deposit No Later than 48-Hours Prior to the Start of the Auction.

RIGGING - SHIPPING SETUP

JAS Graphic, Inc., 5870 Elmwood Avenue, Indianapolis, IN 46203, has inspected the machinery. JAS has pricing available for Rigging and Shipping for all major items to be offered at the Auction. For further information, please contact:

Jay Squire, (317)782-0517 jay@jasgraphics.net



Partial View Press Parts Including; (20) Various Size Vacuum Pumps, Control Cabinets, Wire, and More



NEW 2006

Esatec Model DT2 1300 Type 251P6TNSICALT CD Case Gluing Line

MULTI PACKAGING SOLUTIONS



(2) 3,500 Lb. Toyota Model 7FBCU25 Solid Tire Electric Lift Truck



(9) Electric Walk-Behind Pallet Trucks by Yale & Clark Up to 6,000 LB



3,000 LB Yale MRW030 Electric Stacker & 2,000 LB Lift-Rite Electric Die Lift

AIR COMPRESSOR

250 HP Ingersoll-Rand Model SSR-EP250 Cabinet Enclosed Rotary Screw Air Compressor; S/N F7121U93062, 1,066 CFM, 125 PSIG, Power On Hours: 46,447, Loaded Hours: 19,525 SEE PHOTO

30 HP Sulair Model E58-30H/A/SUI Air Compressor; S/N 003-125013

5 HP Kaeser Model EPC840-100 Air Compressor (New 1999)

Ultrafilter Int'l Model SD0050-60 Refrigerated Air Dryer; S/N 003/14374/08

BALERS

29" X 36" X Variable" Balemaster Model E4030G-8, G, Q, M, J, S, Z, 7, U, L, Auto-Tye Horizontal Hydraulic Baler; S/N B0103-03-16690598, (10) Tying Reels, 30 HP Hydraulic Pump

29" X 36" X Variable" Balemaster Model 4130G-8, G, J, J, 3, L, M, Q, U, X, Z, 7, Auto-Tye Horizontal Hydraulic Baler; S/N B0102-05-2287516, (10) Tying Reels, 30 HP Hydraulic Pump SEE PHOTO

30" X 60" IPS Model V-606-HD Vertical Hydraulic Cardboard Baler; S/N 12432 (New 2007) SEE PHOTO

30" X 60" McClain Model E-11HD-460 Vertical Hydraulic Cardboard Baler; S/N 11E02023308 (New 2002) SEE PHOTO

13" Diameter X 70" High Krestrel Corematic Pneumatic Core Splitter; S/N C1000, 12" Diameter Die SEE PHOTO

SHREDDER

62" Wide Balemaster Model 1250-62", D, K-2, N, U, X, Paper Shredder; S/N H0131-01, 22873003, 50 HP Motor, w/ 48"W X 144" Infeed Belt Conveyor & 48" W X 144" Incline Belt Conveyor

SUPPORT EQUIPMENT

10,000 Lb. Weight-Tronix Digital Platform Scale Model WI-127 DRO; S/N 4200, 42" X 60" Platform

5,000 Lb. Mettler Toledo Model ES-45-5K Digital Platform Scale; S/N 42688, Lynx DRO, 48" X 59" Platform, Epson Printer SEE PHOTO

1000 Lb. Mettler Toledo Deckmate Digital Platform Scale; S/N N/A, Lynx DRO, 30" X 30" Platform

500 Lb. Mettler Toledo Deckmate Digital Platform Scale; S/N 1036492, Lynx DRO, 30" X 30" Platform, with Label Printer

55 Gallon Accurate Ind. Barrel Compactor; 3 HP Hydraulic Pump SEE PHOTO

1 Gallon Gray Quickpac Model QP-160 Can Crusher

60" Wide Lantech Model 300 Rotary Stretch Wrapper; S/N Q2643 (Out of Service)

(28) 28" X 60" X 34" High Portable Steel Trash Hoppers SEE PHOTO

(10) Portable Plastic Trash Hoppers

1 Ton X 16' Span Under Hung Bridge Crane, with 1 Ton Coffing Chain Hoist

48" with Die Lifting Crane Attachment

LIFT TRUCKS & RELATED

6,000 Lb. Yale Model GLC060VXNVSE085 LP Gas Solid Tire Lift Truck; S/N A910V10442E, Three-Stage Mast, 181" Lift Height, Finger Controls, 48" Forks, Hours: 11,503(Bad Head)

5,000 Lb. Clark Model GCX25 LP Gas Solid Tire Lift Truck; S/N GX230-1026-7590K0F, Two-Stage Mast, 128" Lift Height, Hours: 2,037

> 6,000 Lb. Cascade Model 60F-RC-04F Paper Roll Clamp; S/N 68261-P-4, 30" - 60" Clamp Opening

5,000 Lb. Caterpillar Model T50D LP Gas Solid Tire Lift Truck; S/N 8EB08808, Three-Stage Mast, 173" Max Lift Height, 40" Forks

4,000 Lb. Yale Model GLC040SVXNUE082 LP Gas Solid Tire Lift Truck; S/N

C809V01672C, Three-Stage Mast, 187" Lift Height, Side Shift, 48" Forks, Hours: 12,118

(2) 3,500 Lb. Toyota Model 7FBCU25 Solid Tire Electric Lift Truck; S/N 72569, Hours: 10,868, S/N 72570, Hours: 18,619, 3-Stage Mast, 218" Lift Height, Side Shift, Dual Pallet Fork Spreader, 36 Volt with Tennant 36 Volt Charger, 18,619 Hours SEE PHOTO

3,000 Lb. Yale Model MRW030LCN24TV072 Electric Walk Behind Stacker; S/N B821N02000V, 101" Lift Height, 24-Volt

6,000 Lb. Mitsubishi Model PMW30 Electric Walk Behind Pallet Truck; S/N PMW30355, 24-Volt

6,000 Lb. Yale Model MPW606LCN24T2748 Electric Walk Behind Pallet Truck; S/N A838N05818T, 24-Volt

5,000 Lb. Clark Model P25 Electric Walk Behind Pallet Truck; S/N P600-0044-7720FB, 24-Volt

(6) 4,000 Lb. Yale Model MPB040ACN24C2748 Electric Walk Behind Pallet Truck; S/N A827N26430W, A827N18896V, A827N23156W, A827N26431W, A827N35874Y, and A827N20204V, with Built in Charger

2,000 Lb. Lift-Rite Model L63 Electric Die Lift; S/N 4838, 42" Forks

(3) 24-Volt KW Battery Co. Model 12-600F1B22 Battery Charger

Vestil Model FMDL-1 Fork Type Barrel Grabber

SCISSOR LIFTS

JLG Model 3969 Scissor Electric Self Traveling Man Lift; S/N CO126320200014747, 48 Volt, 39" Max Deck Height, 32" Max Travel Height, 750 Lb. Platform Capacity, Built in Charger, 5' X 9' Platform with 4" Extension, 4,000 Hours

FLOOR SCRUBBER

Tennant Model 528 LP Gas Ride-On Floor Scrubber; S/N 31564, Hours 3,918

RACKING AND CABINETS

Push/Pull Racking System Consisting of; (120) 40" Deep X 12" High Push/Pull Uprights, (191) 52" Cross Beams, (62) 200" Long Rails

(12) Sections 48" Deep X 50" Wide X 13" High Clip Type Adjustable Beam Pallet Racking

(13) 48" Wide X 13" High Clip Type Pallet Rack Uprights

(44) 94" Cross Beams

(41) 46" X 48" Wire Decking

(3) Strong Hold Two-Door Storage Cabinets

(7) H.D. Steel Parts Bin Cabinets

SHOP EQUIPMENT

(40) 40" X 48" X 30" High Collapsible Wire Baskets

(7) 30" X 38" X 28" High Collapsible Wire Baskets

Large Quantity of Various Size Bearing From 606 - 7206 by Timken, SNR, NTN, INA

Large Quantity of Various Hardware, Nuts, Bolts, Washers

Large Quantity of Various Wire, Fuses, Breakers, Timers, Limit Switches, Sensors, Ballasts

Shop Equipment Consisting of; (24) Columns Mounted Fans, Safety Mirrors, (6) Pneumatic Hose Reels, Various Size Eye-Bolts, Nylon Slings, Chain Falls, Threading Kits, Bottle Jacks, Rigid Pipe Wrenches, Rigid Manual Pipe Threader with Dies, Hand Tools, (2) Rigid Tri-Stand, Miscellaneous Steel, 24" X 36" Metroplate Granite Surface Plate, Various Hose, Various Electrical Test Equipment, V-Belts, (3) Fireproof Cabinets, Various Size Steel Tables / Carts, (22) Steel Portable Computer Cabinets, (10) Locker Units, (11) Pedestal Fans, Morse Barrel Hydraulic Hoist, Barrel Cart, (2) Portable Steps, Conduit

Office Furniture Consisting of; Modern Modular Office Furniture, (80) Various Size File Cabinets, (40) Lateral File Cabinets, Steel Bookcases, Steel Desks, Office Partitions, (14) Cafeteria Booths, Kitchen Cabinets



15" X 54" Cincinnati Tray-Top Geared Head Engine Lathe



13" Diameter X 70" High Krestrel Corematic Pneumatic Core Splitter



55 Gallon Accurate Ind. Barrel Compactor



Large Quantity of Office Furniture Including; Modern Modular Office Furniture, File Cabinets, Bookcases and Related



(10) Strong Hold and H.D. Steels Parts Cabinets



(38) 28" X 60" X 34" High Portable Steel Trash Hoppers



5,000 Lb. Mettler Toledo Model ES-45-5K Digital Platform Scale



PUBLIC AUCTION

Plant Closed, Surplus Equipment From
MULTI PACKAGING SOLUTIONS

4025 3rd Parkway – Terre Haute, Indiana 47804
 70 Miles West of Indianapolis, IN

SALE DATE:
Tuesday, February 18th
STARTING: 9:00 AM

INSPECTION:
 Monday, February 17th
 10:00 AM to 4:00 PM



CINCINNATI INDUSTRIAL AUCTIONEERS

auctioneers | appraisers | since 1961

Contact Information
 2020 Dunlap St.
 Cincinnati, Ohio 45214
 Phone 513-241-9701
 Fax 513-241-6760
www.cia-auction.com



(4) Vertical & Horizontal Balers



(3) Paper Jiggers



250 HP Air Compressor



(6) Lift Trucks by Yales & Clark

FIRST CLASS MAIL!

PRE-SORT
 FIRST CLASS
 U.S. POSTAGE
PAID
 CINCINNATI, OHIO
 PERMIT NO. 3593

Important Mail

TO BE DIRECTED TO THE ATTENTION
 OF EXECUTIVE PERSONNEL



TUESDAY, FEBRUARY 18TH

PUBLIC AUCTION

Plant Closed, Surplus Equipment From
MULTI PACKAGING SOLUTIONS
 4025 3rd Parkway
 Terre Haute, Indiana 47804
 70 Miles West of Indianapolis, IN

IMPORTANT NOTICE:

Although information has been obtained from sources deemed reliable, the auctioneer makes no warranty or guarantee, expressed or implied, as to the accuracy of the information herein contained. It is for this reason that buyers should avail themselves of the opportunity to make inspection prior to the sale. This brochure is intended to provide general information of the equipment being offered and is subject to errors, omissions, additions or deletions. Please check with the Auctioneer's Office for a final listing. Items offered may or may not necessarily be sold as described and/or photographed in this brochure.

MAIL BIDS ACCEPTED WITH A 25% DEPOSIT

DIRECTIONS

From I-70 West of Indianapolis, IN Proceed to Exit 11 for IN-46/US-40. Turn North on IN-46/US-40 Continue 3.2 Miles to Wabash Ave. Turn Left onto Wabash Ave Proceed 1.4 Miles to Blakely Ave. Turn Right onto Blakely Ave Proceed 1.9 Miles to E. 3rd Parkway. Turn Right onto 3rd Parkway Continue 0.1 Mile to Sale Site on Right. Watch for Auction Parking and Auction Signs.

AUCTIONEERS

Cincinnati Industrial Auctioneers
 Company Auction License No. AC63004471
 Jeffrey L. Luggen
 Individual Auction License No. AU01051612
 Ryan L. Luggen – Apprentice Auctioneer



TERMS OF SALE

All equipment described herein will be sold "as is", "where is" to the highest bidder or bidders for cash in accordance with our regular terms and conditions of sale. Unless other satisfactory arrangements are made, a **25% deposit** in cash, certified or cashier's check payable to Cincinnati Industrial Auctioneers, Inc., **is required on all purchases.** Firm and personal checks accepted only if accompanied by a letter from your bank guaranteeing your funds. All sales are subject to state and/or local taxes unless a signed exemption form is presented at the time of purchase. **All balances are due at the conclusion of the sale.** No merchandise may be removed while the sale is in progress. **All bidders must comply with our Standard Terms of Sale,** copies of which will be available at the sale site or can be obtained from our website.

15% ONSITE BUYER'S PREMIUM
18% ONLINE BUYER'S PREMIUM



Sale Under The Management Of

CINCINNATI INDUSTRIAL AUCTIONEERS

auctioneers | appraisers | since 1961 | cia-auction.com | info@cia-auction.com
 2020 Dunlap St., Cincinnati, Ohio 45214 Phone 513-241-9701 Fax 513-241-6760