

LIVE / WEBCAST AUCTION



COMPLETE SHUT DOWN OF LARGE TANK MANUFACTURING COMPANY

2-DAY AUCTION: JUNE 24 & 25 AT 9:00 AM MDT

LOCATION: 8301 Broadway Blvd. SE, Albuquerque, NM 87105

INSPECTION: June 22 & 23, 8:00 am to 4:00 pm MDT

FOR MACHINERY QUESTIONS, CONTACT: Burdette (314) 616-8422



ROUND O ANGLE ROLL, MDL. R-52-S



WEBB PLATE BENDING ROLL, MDL. 18L



VIEW OF GENERATORS



(2) TEREX ROUGH TERRAIN CRANES, MDL. RT-230

Sale
Conducted
by:

HYPERAMS
asset maximization services

(847) 499-7049
www.hyperams.com

Sale in
Conjunction
with:



CINCINNATI
INDUSTRIAL
AUCTIONEERS
auctioneers | appraisers | since 1961



ROUND O ANGLE ROLL, MDL. R-52-S



ESAB/LINDE CNC PLASMA SHAPE CUTTING SYSTEM, MDL. CM-350



WEBB FLANGER BENDING ROLL, MDL. M5



WEBB PLATE BENDING ROLL, MDL. 9L-1310, 5/8" X 10'



BERTSCH PLATE BENDING ROLL, MDL. 14, 3/4" X 12'

ANGLE ROLL

- Roundo Angle Roll, Mdl. R-52-S, 5" x 5" x 1/2", S/N 098503

PLATE BENDING ROLLS

- Bertsch Plate Bending Roll, Mdl. 14, 3/4" x 12', with (3) 14" Diameter Pyramid Rolls, S/N M6958-A
- Webb Flanger, Mdl. M5, 1/2" Capacity, Idler Rolls on Rails, Guide Rolls, S/N 6073
- Webb Plate Bending Roll, Mdl. 18L, 1-3/16" x 10', S/N 67114
- Webb Plate Bending Roll, Mdl. 9L-1310, 5/8" x 10', S/N RB-94-5073
- Wysong Plate Bending Roll, Mdl. B-72, 3/16" x 6', S/N PR21-164

PLASMA SHAPE CUTTING SYSTEM

- Esab/Linde CNC Plasma Shape Cutting System, Mdl. CM-350, (1) Plasma Head, (1) Gas Torch Head, with 10' x 60' Water Table, S/N 82-8-3539 w/(2007) CMC Burny Phantom CNC Control, and Hypertherm HPR260 Plasma Cutting Source, S/N 003053

SHEARS

- Hercules Hydraulic Power Shear, Mdl. 500-120, Cap. 1/2" x 10', S/N 5001201274149
- Wysong Hydraulic Power Shear, Mdl. 1025, Cap. 1/4" x 10', P37-196
- Blue Valley Power Circle Shear, Mdl. No. 60, S/N 60-376

IRONWORKER

- Mubea Hydraulic, Ironworker, Mdl. HIW 1000/610, 110-Ton Capacity, S/N HIW-1000/610-221

BAND SAW

- Marvel Vertical Band Saw, Mdl 8-MARK-III, S/N 840183

PRESS BRAKE

- Cincinnati Mechanical Press Brake, Series 21, 600-Ton Capacity, S/N 15259

BEVELING MACHINE/FLANGER

- Pullmax Portable Beveling Machine, Mdl. X-91, 1" Cap., S/N 59010-14
- Blue Valley Power Circle Flanger, Mdl. No. 4, S/N 4-176

APRON BRAKE

- Mechanical Apron Brake, 3/8" x 10' Cap.

VTL

- Bullard Vertical Turret Lathe, 36" Cap., S/N 17145

DRILLS/SAW/SANDER

- Carlton Radial Arm Drill, 3' arm x 9" column, W/ Box Table, S/N 1A2013
- Summit Geared Head Drill Press
- Stone Abrasive Chop Saw, Mdl. M160, 16", 15Hp, w/Roller Conveyor, S/N 878
- Jet Abrasive Chop Saw, Mdl. COM-20M, 20", 7.5Hp, S/N 1021
- Hammond Belt Sander, Mdl. 600-D

WELDING MANIPULATOR

- (1) Pandjiris Buggy Mount Welding Manipulator, Mdl. 14x12RBM, 14' x 12' Cap., 360 Degrees for 16" Diameter Tanks, S/N 25-2929
- (1) Custom Built, Welding Manipulator, 8' x 8' Cap.

ONLINE BIDDING AVAILABLE: 

COMPLETE SHUT DOWN OF LARGE TANK MANUFACTURING COMPANY



HERCULES HYDRAULIC POWER SHEAR, MDL. 500-120



WYSONG HYDRAULIC POWER SHEAR, MDL. 1025



2004 MUBEA HYDRAULIC IRONWORKER, MDL. HIW 1000/610



MARVEL VERTICAL BAND SAW, MDL 8-MARK-III



CINNATI MECHANICAL PRESS BRAKE, SERIES 21



WELDING MANIPULATOR



OVERVIEW OF WELDERS



(25) LINCOLN SUITCASE WIRE FEEDERS



VIEW OF PLASMA CUTTERS



OGDEN 3 O'CLOCK WELDERS



TANK TURNING ROLL SET



LATE MODEL IR AIR COMPRESSORS

WELDERS

- (18) Lincoln Welders, Mdl. Flextec 450, 450 Amp
- (17) Lincoln Welders, Mdl. Idealarc R3R-400, 400 Amp
- (12) Lincoln Welders, Mdl. Invertac V350-PRO, 350 Amp
- (4) Lincoln Welders, Mdl. Power Wave 455M, 450 Amp
- (5) Lincoln Welders, Mdl. DC-600, 600 Amp
- (3) Lincoln Welders, Mdl. Flextec 650, 650 Amp
- (2) Lincoln Welders, Mdl. DC-1000, 1000 Amp
- (5) Miller Welders, Mdl. CBI-400, 400 Amp
- (2) Miller Welders, CP-302
- (1) Miller Welder, Mdl. XMT350CC/CV, 350 Amp
- (2) Lincoln Welders, Mdl. DC-400, 400 Amp
- (4) Lincoln Welders, Mdl. Idealarc R3R-300, 300 Amp
- (2) Lincoln Welders, Mdl. Idealarc R3R-500
- (3) Airco Welders
- (1) Lincoln Welder, Mdl. TIG 300/300, 300 Amp
- (1) Lincoln Welder, Mdl. R3R-500, 500 Amp
- (1) Miller Welder, Mdl. CP-250TS, 250 Amp
- (4) Esab Welders

WIRE FEEDERS

- (4) Lincoln Self-Propelled Tractor Subarc, Wire Feeders, Mdl. LF-7, with Track
- (25) Lincoln Suitcase, Wire Feeders, Mdl. LN-25 PRO
- (4) Lincoln Wire Feeders, Mdl. Powerfeed 10M
- (2) Lincoln Wire Feeders, Mdl. LF-74
- (3) Lincoln Wire Feeders, Mdl. LN-7
- (1) Miller Extended Reach, Wire Feeder, Mdl. XR
- (1) Lincoln Wire Feeder, Mdl. LN-8
- (2) Miller Wire Feeders, Mdl. S-22A
- (1) Miller Wire Feeder, Mdl. 80A

TANK TURNING ROLL SETS

- (12) Sets of Tank Turning Rolls from Prestin-Eastin, Ransome, Reeves, Webb, ESP

AUTOMATIC GII WELDERS – Various Makes

- (4) Ogdens 3 O'Clock Automatic Girth Welders, with Lincoln NA-3N Controller

PLASMA CUTTERS

- (5) Plasma Cutters by Hypertherm, Lincoln and Thermal Dynamics

WELDER GENERATOR

- (2) Miller Welder Generators, Mdl. Bobcat 225, 225 Amp
- (1) Lincoln Welder Generator, Mdl. Ranger 8

AIR COMPRESSORS

- (2011) Ingersoll-Rand Rotary Screw Air Compressor, Mdl. R160I-A125, 200 HP, 905CFM @ 125 PSIG, with Vertical Air Receiving Tank, and Van Air Filter, S/N V1367U11311
- Ingersoll-Rand Rotary Screw Air Compressor, Mdl. SSR-EP200, 200 HP, 892CFM @ 125 PSIG, 64, 112 Hours, S/N F12870U96032

**FOR MACHINERY
QUESTIONS,
CONTACT: BURDETTE
(314) 616-8422**

1 of 2



(2) TEREX ROUGH TERRAIN CRANES, MDL. RT-230



LORAIN ROUGH TERRAIN CRANE, MDL. LRT-275D



Vintage
1949

BUCYRUS-ERIE CRAWLER CRANE



INGERSOLL-RAND ROUGH TERRAIN LIFT TRUCK



CATERPILLAR 18,000 LB. CAP. TOWMOTOR LIFT

MOBILE CRANES

- (2) (1998) Terex Rough Terrain Cranes, Mdl. RT-230, 30-Ton Capacity, Swing Cab Cummins Diesel Engine, (7,773 Hours)
- (1994) Lorain Rough Terrain Crane, Mdl. LRT-230E, 30-Ton Capacity, Swing Cab, (9,299 Hours)
- (1989) Lorain Rough Terrain Crane, Mdl. LRT-275D, 27.5-Ton Cap., Swing Cab, (10,820 Hours)
- (1990) Lorain Rough Terrain Crane, LRT-275D, 27.5-Ton Cap., Swing Cab, (5,493 Hours)
- (1949) Bucyrus-Erie Crawler Crane, Mdl. 54-B, 70-Ton, with Lattice Boom, (Mounted in Pit Outside)

BOOM CRANE TRUCK

- (1989) Kenworth Boom Crane Truck, Mdl. T600A, 14-Ton Capacity, with National Mdl. 1400JBT Crane

LIFT TRUCKS

- (1995) Ingersoll-Rand Rough Terrain Lift Truck, Mdl. VR-90B, 9,000Lbs. Capacity, Diesel, High Lift, (9,166 Hours), S/N 5399
- (1997) Ingersoll-Rand Rough Terrain Lift Truck, Mdl. VR-90B, 9,000Lbs. Cap., Diesel, High Lift, S/N 149564
- (1988) Clark Diesel Lift Truck, Mdl. C500Y-155, 15,500Lbs. Cap., 108" Forks, S/N Y1015-109-70
- Caterpillar 18,000 Lb. Cap. Towmotor Lift
- (1998) Clark Diesel Lift Truck, Mdl. C500Y-135, 13,500Lbs. Cap., S/N 88080003
- (1999) Case Rough Terrain Lift Truck, Mdl. 586G, 6,000Lbs. Cap., Diesel, S/N JG60290401
- (1975) KW-Dart Rough Terrain Lift Truck, Mdl. 201-762, 10-Ton Cap., (6,111 Hours), S/N 52270

GENERATORS

- Caterpillar Diesel Generator, Mdl. SR4, 210 KW, with CAT 3304 Engine, Skid-Mounted, S/N 9NR00716
- Caterpillar Diesel Generator, Mdl. SR4, 210 KW, with CAT 3306 Engine, Skid-Mounted, S/N 9NR03202
- Caterpillar Diesel Generator, Mdl. SR4, 205 KW, with CAT 3306 Engine, Skid-Mounted, S/N 6D000453
- Caterpillar Diesel Generator, SR4, 160 KW, with CAT 3208 Engine, Skid-Mounted, S/N 9EF01109
- Caterpillar Diesel Generator, 250 KW, Skid-Mounted, S/N 90U16379
- Caterpillar Diesel Generator, Mdl. SR4, Skid-Mounted, S/N 6YR00601
- Caterpillar Diesel Generator, 160 KW, with CAT 3306 Engine, Skid-Mounted, S/N 5DA06479
- Caterpillar Diesel Generator, SR4, 125 KW, Skid-Mounted, S/N 9AB05362
- Diesel Generator, with Cummins 6-Cylinder Engine, (7,613 Hours) Skid-Mounted
- Lima Diesel Generator, 125 KW, with Hercules 6-Cylinder Engine, (2,504 Hours) Skid-Mounted

COMPLETE SHUT DOWN OF LARGE TANK MANUFACTURING COMPANY



CATERPILLAR DIESEL GENERATOR



VIEW OF GENERATORS



INGERSOLL-RAND PORTABLE DIESEL AIR COMPRESSOR



CAPACITY YARD SPOTTER, MDL. TJ5000



KENWORTH TANDEM AXLE TRUCK TRACTOR, MDL. T600



MARKLIFT SELF PROPELLED AERIAL LIFT 62



(17) FLATBED TRAILERS-ASSORTED MAKES AND SIZES



REFRIGERATED VAN TRAILER



STRICK VAN TRAILER



DETACHABLE GOOSENECK LOWBOY TRAILER, 50 TON

AIR COMPRESSORS

- Doosan Portable Air Compressor
- (1997) Ingersoll-Rand Portable Diesel Air Compressor, Mdl. XP750WCU, 750CFM, S/N 276378UDH710
- Ingersoll Rand Mdl. 7100 Portable Compressor
- LeRoi Portable Compressor
- (2007) Ingersoll-Rand Air Compressor, Mdl. 2475, 7.5 HP, Vertical Tank Mounted, S/N 0712050048

YARD SPOTTER TRACTOR

- (2001) Capacity Yard Spotter, Mdl. TJ5000, (6970 Hours)

LOADER/BACKHOE/TRACTOR

- (1976) Ford Loader/Backhoe, 550, with ROPS Canopy, (6,787 Hours), S/N C516337
- (1971) Ford Wheel Tractor, 4000, with Front Bucket, and Big Rhino Scraper, (2,940 Hours), S/N C307323

TRUCK TRACTORS

- (1989) Kenworth Tandem Axle Truck Tractor, Mdl. T600, with 42" Sleeper, 490,929 Miles, VIN #1XKAD29X6KJ519804
- (1990) Mack Tandem Axle Truck Tractor, Mdl. CH613, 1,204,633 Miles, VIN #1M2AA06Y9LW001353
- (1990) Kenworth Tandem Axle Truck Tractor, T600, with Sleeper, 674,626 Miles, VIN #1XKAD29X7LS534632
- (2001) Mack Tandem Axle Truck Tractor, CX613, Sleeper, 60", Vision 460 Engine, Eaton Fuller Transmission, 845,570 Miles, VIN #1M1AE07Y01W007420

AERIAL LIFT/SCISSOR LIFT/MANLIFT

- Skyjack Scissor Lift, Mdl. SJ9250-XD2, 1,500Lbs. X 50'H Capacity, with Extendable Platform, S/N 5522
- Genie Manlift, Mdl. PL30P, 300Lbs. Capacity, S/N 1480-1890
- Marklift Self Propelled Aerial Lift, 62, with Wisconsin Engine, 7,016 Hours, S/N 1085-M2357

TRAILERS

- (17) Flatbed Trailers-Assorted Makes and Sizes
- Gooseneck Lowboy Trailer, Challenger, 50-Ton Capacity, Triple Axle, Steel Frame, Wood Deck
- (3) Drop Deck Flatbed Trailer
- (4) Flatbed Utility Trailers, 16' & 18'
- Gooseneck Trailer, 45'L, Single Axle, Steel Frame
- Great Dane Refrigerated Van Trailer, Mdl. 7811TZ-1A, 48'L, Tandem Axle, Swing Doors, w/Thermo King SB-IIISR+ Reefer Unit
- (1) Utility Refrigerated Van Trailer, VS2R, 53'L, 1999
- Gooseneck Flatbed Trailer, 30'L, Tandem Axle, with Beaver Tail
- Great Dane Van Trailer, 53'L, Tandem Axle, Swing Doors
- 53 foot all steel drop deck trailer
- Eagle Trailers Enclosed Cargo Trailer, 12'L, Tandem Axle
- Water Trailer, 500-Gallon Capacity, Single Axle, with Pump
- Strick Van Trailer, 45'L



2012 HANSEN PAINTING TENT SYSTEM



LARGE QUANTITY OF SHOT BLAST TANKS AND SPRAYERS



WELDER GENERATORS

- (2) Lincoln Welder Generators, Mdl. SA-250, 250 Amp, Trailer Mounted
- (1) Lincoln Welder Generator, SA-200, 200 Amp, Trailer Mounted

PAINTING TENT SYSTEM

- (2012) Hansen Painting Tent System, Weatherport, 50'W x 120'L, Bolted Steel Frame, White Vinyl Canvas Cover, (Dirt Floor)

PAINTING/BLASTING EQUIPMENT

- Quantity of Blast Pots
- Quantity of Airless Paint Pumps; Paint Pots; Sprayers

PROPORTIONER

- (2012) Graco Plural Component Proportioner, Mdl. E-XP1, with Graco Triton 308 Pump, and Hose, S/N A137

VEHICLES

- (1998) Ford Van Club Wagon, 3 Bench Seats, V10 Triton Gas Engine, (232,407 Miles)
- (2008) Ford Pickup Truck, F350 Lariat King Ranch, Crew Cab, 4x4, 6.4L V8 Diesel Engine, Leather, NAV, (210,000 Miles)
- (2007) Chevrolet Pickup, Truck, 2500HD LTZ, Crew Cab, 4x4, 6.6L Duramax Diesel Engine, Leather, (170,000 Miles)
- (2001) Ford Pickup Truck, F350XLT, Extended Cab, 4x4, 6.0L Power Stroke Turbo Diesel Engine, (250,534 Miles)
- (1998) Ford Pickup Truck, F150XLT, Extended Cab, 2WD, Manual Transmission, V8 Triton Gas Engine, (298,845 Miles)
- (2000) Ford Pickup Truck, F250XLT, Extended Cab, 4x4, 5.4L Gas Engine, (428,582 Miles)
- (2005) Ford Pickup Truck, F250XLT, Extended Cab, 2WD, 6.0L Power Stroke Turbo Diesel Engine, (240,670 Miles)
- (2002) Ford Sport Utility Vehicle, Explorer Eddie Bauer, Leather Int., V8 Gas Engine
- (1999) Thomas/International School, Bus, 26-Passenger, Automatic Transmission, (165,000 Miles)

TANK JACKING SYSTEM

- (2008) Oostwouder Automated Electric, Tank Jacking System, 14-Ton Capacity, (For construction from the ground of field erect water & petroleum flat bottom & standpipe tanks. Jacks are capable of up to 120" x 60' for flat bottom tank and 40' x 120' standpipe tank. System is capable of constructing tanks from the ground and capable of rotating the tank for automated welding)

TURNING ROLLS

- Custom Built Mobile Turning Rolls, 45'L, with (3) Sets of Rolls, (Used for Sandblasting and Painting)

BUILDINGS

- 40'x27' Modular Office Building
- 24'x30' Modular Office Building

COMPLETE SHUT DOWN OF LARGE TANK MANUFACTURING COMPANY



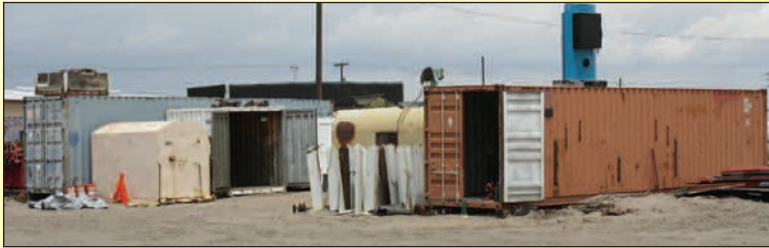
FORD F350 PICKUP TRUCK



THOMAS/INTERNATIONAL SCHOOL BUS, 26-PASSENGER



VIEW OF STORAGE CONTAINERS



VIEW OF STORAGE BOXES



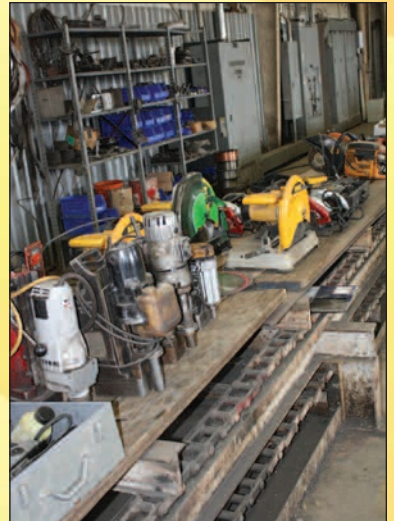
VIEW OF STEEL PLATES



SHEET GRABBERS



VIEW OF GRINDERS



VIEW OF MAGNETIC BASED DRILLS & SAWS



VIEW OF STEEL STOCK



VIEW OF I BEAMS



WELDING LEADS



WELDING TABLE

**Large Qty. of Steel,
Over 250,000 Lb. of Plate
& Structural Steel**

STORAGE CONTAINERS

- (13) Steel Conex Storage Containers 20' to 40'
- (14)-Steel Doghouse Storage Container Assorted Sizes

PRESSURE WASHER

- Hydro Engineering Pressure Washer, 5/3GHOH-S, w/Kohler 18 HP Engine

DUST COLLECTOR

- Hoffmann Free-Standing Dust Collector, 16-Cartridge

HEATER

- Frost Indirect-Fired Heater, Mdl. IDF500, 500,000 BTU/Hr., No. 2 Furnace Oil

MIXER

- Strong Electric Concrete Mixer, Fillermate

FOLLOWING LISTINGS OF ASSETS BEING SOLD THROUGHOUT THE AUCTION

FIELD AND SUPPORT EQUIPMENT

- Custom Fabricated Shell Buggy's; Crane Lifting Spreader Bars; Tool Storage Boxes; Hand-Held Power Grinders & Tools; Magnetic Based Drills & Saws; Hand Tools; Clamps; Come-A-Longs; Chain Falls; Harnesses; Lanyards; Retractable; Reels; Rope & Cabling; Chain; Shackles; Jack Stands; Pumps; Fire Hose & Blankets; Safety Apparatus; Pipe Threaders; Gas Tank Pumps; Power Hand Tools; Fans; Storage Cabinets; Etc.

FIT UP GEAR

- Key Plates, Blank Nuts, Bull Pins, Fit Up Bars, Key Shims, U-Bars, Key Channels, Bracket Straps, Tank Trolleys, Tool Baskets, Fuel Tanks

WELDING MISC.

- Welding Cable; Welding Guns & Accessories; Welders Windshields; Rod Ovens; Gauges & Regulators; Oxy-Acetylene Welding Apparatus

ELECTRICAL

- Power Distribution Panels; Electrical Cords & Plugs, Portable Lighting Units

SCAFFOLDING

- 10' & 12' Scaffolding Boards; Scaffolding Brackets & Posts; Oak Cribbing

LADDERS

- Hook Ladders; Extension & Step Ladders

TEST AND MONITOR

- Air Quality Test Monitoring Instruments; Electrical Test Equipment; Vacuum Box Testers

OFFICE EQUIPMENT

- Desks, Chairs, Tables, File Cabinets, Laptop Computers, Desktop Computers, Printers, Network Computer Equipment, Office Machines

**LARGE SCRAP
OPPORTUNITY!**

COMPLETE SHUT DOWN OF LARGE TANK MANUFACTURING COMPANY



BROWN-MINNEAPOLIS TANK
ENGINEERS - FABRICATORS - CONSTRUCTORS



ROUND ANGLE ROLL



CNC PLASMA SHAPE CUTTING SYSTEM



LORAIN ROUGH TERRAIN CRANE



HANSEN PAINTING TENT SYSTEM

HYPERAMS
asset maximization services
1501 Michael Dr., Wood Dale, IL 60191

2-DAY LIVE/WEBCAST AUCTION
June 24 & 25 @ 9:00 AM MDT
LOCATION: 8301 Broadway Blvd. SE, Albuquerque, NM
FOR MACHINERY QUESTIONS, CONTACT:
BURDETTE (314) 616-8422



BROWN-MINNEAPOLIS TANK
ENGINEERS - FABRICATORS - CONSTRUCTORS

COMPLETE SHUT DOWN OF LARGE TANK MANUFACTURING COMPANY



WEBB PLATE BENDING ROLL

2-DAY AUCTION: June 24 & 25 @ 9:00 AM MDT
INSPECTION: June 22 & 23, 8:00 am to 4:00 pm MDT
QUESTIONS: (847) 499-7049
REGISTER & BID AT www.hyperams.com
LOCATION: 8301 Broadway Blvd. SE, Albuquerque, NM



IR ROUGH TERRAIN LIFT TRUCK



KENWORTH TANDEM AXLE TRUCK TRACTOR

Additional Information: Register & Bid at hyperams.com
For Machinery Questions, contact: Burdette (314) 616-8422
Removal: June 26 to July 10, 8:00 am to 4:00 pm MDT
See website for terms of sale and accepted payment.
Sales tax and buyers premium of 18% online/15% onsite
will be added to all invoices.



VIEW OF GENERATORS

ONLINE BIDDING AVAILABLE: BidSpotter.com

Sale
Conducted
by:

HYPERAMS
asset maximization services

(847) 499-7049
www.hyperams.com

Sale in
Conjunction
with:



**CINCINNATI
INDUSTRIAL
AUCTIONEERS**
auctioneers | appraisers | since 1961