

HIGH PRODUCTION CNC, AUTOMATIC MACHINING AND SUPPORT EQUIPMENT FROM AN AUTOMOTIVE SUPPLIER

Bidspotter.com™
 See Instructions on Page 2
 To Become a Qualified Bidder on the Internet

PUBLIC AUCTION



**New/
Remanufactured
2004**

(3) Fellows Model 10-2 CNC Gear Shapers

Featuring: (3) Fellows Model 10-2 CNC Gear Shapers (2004), Bryant Model UL2 CNC Internal Grinder (2004), (2) Fuji Model FS-4 CNC Chuckers, (3) Cincinnati Model 220-8 RK Series Programmable Centerless Grinders, (3) Broach Vertical Broaches w/ 60" & 72" Strokes, (3) Acme Automatic Bar Machines, (2) 1-1/4" Schutte Eight-Spindle CNC Automatic Bar Machines, Rismastic Rotary Transfer Machine, Govro Rotary Index Drills, Diamond Hones, Bishop Slot Generators, Microfinishers, Toolroom Machinery, Washers, Toccotron & Thermonic Induction Heaters, Coolant Units, Machine Accessories & Inspection Equipment

SURPLUS TO THE NEEDS OF



8229 Tyler Blvd. – Mentor, Ohio 44060
 30 Miles Northeast of Downtown Cleveland



Robotic Load Induction Hardening System w/ Tocco Power Supplies

**SALE DATE:
Wednesday,
January 11th
Starting at 9:00 AM**

**INSPECTION:
Tuesday, January 10th
10:00 AM to 4:00 PM**

www.cia-auction.com

Features:

- Upcoming Sale Information
- Liquidation & Equipment Section
- Email Auction Notification
- Recent Auction Results
- Lot Catalog Listings
- Photo Galleries
- Downloadable Forms
- Complete Terms of Sale
- Staff Profiles
- Reference Information



RIS Type Rismatic Model 154C-16 F35 Sixteen-Station Rotary Transfer Machine



1-5/8" Acme Gridley Model RB-8 Eight-Spindle Automatic Bar Machine



**NEW
2004**

Bryant Ultraline Model UL2 CNC Cylindrical I.D. Grinder



(4) Fuji Model FS4 Two-Axis CNC Chuckers

SALE UNDER THE MANAGEMENT OF



Cincinnati Industrial Auctioneers Inc.

2020 DUNLAP ST., CINCINNATI, OHIO 45214 PHONE (513) 241-9701 / FAX (513) 241-6760
 WEBSITE: cia-auction.com for printable brochures, catalog, terms and proxy-bidding



**NEW
2004**

Bryant Ultraline Model UL2 CNC Cylindrical I.D. Grinder



**New/
Remanufactured
2004**

(3) Fellows Model 10-2 CNC Gear Shapers



(3) Fellows Model 10-2 CNC Gear Shapers

CNC & CONVENTIONAL GEAR SHAPERS

(3) Fellows Model 10-2 CNC Gear Shapers; S/Ns 35071 (GS-2), 35075 (GS-3) & 35074 (GS-1), Fanuc Power Mate CNC Control, 14" Diameter Chucks, 33 - 1,300 SPM, 5 - 800 RPM, CATALOG SPECS: 10" Maximum Pitch Diameter (External), 10" Maximum Pitch Diameter (Internal), 4 Maximum Diametral Pitch (Spur), 5 Maximum Diametral Pitch (Helical), 2" Maximum Face Width 10-2 **(New/Remanufactured 2004)** **SEE PHOTO**

Fellows Model 10-2 Conventional Gear Shaper; S/N 35999 (GS-5), Push Button Control, 14" Diameter Chuck, 13 - 1,300 SPM, 5 - 800 RPM **SEE PHOTO**

CNC I.D. GRINDER

Bryant Ultraline Model UL2 CNC Cylindrical I.D. Grinder; S/N W-17907, Fanuc Series 160i-T CNC Controls, CATALOG SPECS: 6" Max. Swing, .3940" Min. thru 5.5" Max. I.D. Grinding Range, 3" Overall Grinding Length, Up to 26 Degree Wheelhead Angle, Wheelhead Speeds to 120,000 RPM, No. IG22 **SEE PHOTO**

Kalcon Model VM-12 Filtration System; S/N TM-1250, 12" Wide Paper, 550 Gallon Holding Tank

CNC CHUCKERS

(4) Fuji Model FS4 Two-Axis CNC Chuckers; S/Ns 11642, 11505, 11504 & 11503, Fanuc 21-iTB CNC Control, 4" Turn Diameter, 12.20" X-Axis Travel, 11.81" Z-Axis Travel, Load/Unload Parts Chute, Spindle Speeds to 4,000 RPM, 4-Position Gang Tool Post, Chip Conveyor **SEE PHOTO**

Fuji Model FS4 CNC Chucker; S/N 11503, Currently In Storage

SPLINE ROLLER

Anderson Cook Model M3305 Spline Rolling Machine; S/N 420, Currently In Storage **SEE PHOTO**

INSPECTION MACHINE

Nalle Automation Eight-Station Rotary Parts Inspection Machine; S/N 122040A, Machine Set Up to Check for Proper Threading, Hex & Spline Machining, No. DT01F



Fellows Model 10-2 Conventional Gear Shaper



Anderson Cook Model M3305 Spline Rolling Machine



(4) Fuji Model FS4 Two-Axis CNC Chuckers

SURPLUS FROM MICHIGAN FACILITY TO BE SOLD AT ONLINE ONLY AUCTION ENDING SOMETIME JANUARY, 2012

**Preliminary List Below
Final List will be Available Early January
Email Jeffjr@cia-auction.com for updates**

- (2) 3/4" Eaton Leonard Vectorbend VB75HSRH CNC Horizontal Tube Benders
- (2) Pines Horizontal Tube Benders to 2-1/2" Capacity
- Schwarze Wirtz CNC 40 CNC Horizontal Tube Bender
- Modern 4K & 2K Auto Tube Cut Off's
- (8) Traub Model TNS-30D CNC Lathes
- 1/8" Carlo Salvi MTR/1321 Cold Header & F.E. Drawer
- Halroy Parts Washer
- Adgie X2 Tube Cut Off
- (10) Kawasaki EX & EH 120 Welding Robots
- (10) Kawasaki EX & EH 120 Robots

**15% ONSITE BUYERS PREMIUM
18% ONLINE BUYERS PREMIUM**

WEBCAST BIDDER INSTRUCTIONS

- All Internet bidders must register for this auction at www.bidspotter.com at least 48-Hours Prior to the Sale Date, **if you do not you will not be approved.**
- All Internet bidders must Post a Deposit of Approx. 25% of Your Planned Spending Budget or \$5,000 Minimum with Cincinnati Industrial Auctioneers in Order to be approved to Bid. Those who do Not Post the Deposit Will Not be Approved. **Period.**
- **Only Major Items Will be Available for Online Bidding.** Please refer to the Listing on www.bidspotter.com for Available Online Items.



- There is a 18% Buyer's Premium in Effect for All Online Purchases.



ANGSTROM PRECISION METALS



1-5/8" Acme Gridley Model RB-8 Eight-Spindle Automatic Bar Machine



(2) 1-1/4" Schutte Type AF32 Eight-Spindle Automatic Bar Machines



(2) Cincinnati Milacron Model 220-8 Series RK Programmable Centerless Grinders



Davenport Model B Five-Spindle Screw Machine



1-1/4" Acme Gridley Model RA-6 Six-Spindle Automatic Bar Machine



Ohio Broach & Machine Co. Model XDRVS-7558X Vertical Broach



25 Ton X 72" Stroke U.S. Broach & Machine Co. Model VPD-25TX72 Vertical Broach

ROTARY TRANSFER MACHINE

RIS Type Rismatic Model 154G-16 F35 Sixteen-Station Rotary Transfer Machine; S/N 31350/119, Allen Bradley Panelview 1000 Control, High & Low Pressure Hydraulics, Knoll Type 450K-1/1250M Chip Conveyor, 11" Wide Incline Feed Conveyor w/ Dump Hopper Stand, 24" Stainless Automation Vibratory Parts Feed Bowl, Parts Inversion Capability, Mach. No. RT-01F **SEE PHOTO**

CENTERLESS GRINDERS

(2) **Cincinnati Milacron Model 220-8 Series RK Programmable Centerless Grinders;** S/Ns 9163A0191-0006 (Machine No. CG38F) & 9163A0192-0012 (Machine No. CG40F), Infeed Machines w/ Granite Beds, Allen Bradley Panelview 600 Controls, Each w/ 24" Wide Chemetal Paper Filter Systems, Aercology Mist Collectors, 3 HP Hydraulics, Set Up w/ 6" Grinding Wheels **SEE PHOTO**

SMTW Ecotech Model M1020 Centerless Grinder; S/N 760, Mitutoyo UDR-220-1L DRO, 20 MM

Cincinnati Milacron Model 220-8RK Centerless Grinder; S/N 9163A0191-0008, Currently In Storage

(2) **Cincinnati Model 220-8 Centerless Grinders;** S/Ns 2M2850-56 & 35038HSU-0027, Currently In Storage

Cincinnati Model OMV Centerless Grinder; S/N 91610-MV89-0103, Currently In Storage

BAR MACHINES

(2) **1-1/4" Schutte Type AF32 Eight-Spindle Automatic Bar Machines;** S/Ns 25 & 26, Siemens Sinumerik System 3 Controls, 6th Position CNC Slide w/ Multi-Axis, Transmission at 6th Position, Shaw Tools, Cool Jet High Pressure Tooling Lubrication on S/N 25, Machine No.s A05F & A06F **SEE PHOTO**

1-5/8" Acme Gridley Model RB-8 Eight-Spindle Automatic Bar Machine; S/N 85541, Filmore Clutches w/ Spindle Stopping, 100% Drilling Drive Gears, Milling Die Slide, Aux. Arm Reaming at 7th Position, Shave Tool, Pick-Off, Machine No. A-14 **SEE PHOTO**

1-5/8" Acme Gridley Model RB-8 Eight-Spindle Automatic Bar Machine; S/N 85539, 4th Position CNC Slide w/ Single Axis, Filmore Clutches, Aux. Reaming at 7th Position, Shave Tool, Pick-Off, Machine No. A-13 **SEE PHOTO**

1-1/4" Acme Gridley Model RA-6 Six-Spindle Automatic Bar Machine; S/N 71320-C, Acme Cross Drill at 3rd Position, Accelerated Reaming, 3rd Position Spindle Stopping, Pick-Off at 6th Position, Machine No. A-18 **SEE PHOTO**

1-1/4" Acme Gridley Model RA-6 Six-Spindle Automatic Bar Machine; S/N 71951-A, Cross Drilling & Spindle Stopping at 3rd Position, 100% Drilling, Pick-Off at 6th Position, Machine No. A-2

Davenport Model B Five-Spindle Screw Machine; S/N N/A, 5C Collet Machine, 100% Drilling, Pick-Off, Roto Mist Unit **SEE PHOTO**

2-3/8" Acme Model HSC-6 Screw Machine; S/N H-58337, Currently In Storage

Various Acme Gridley Bar Machine Parts, Tooling and Accessories

BROACHES

25 Ton X 72" Stroke U.S. Broach & Machine Co. Model VPD-25TX72 Vertical Broach; S/N 1512, Allen Bradley DL20 Controls, 75 HP Drive Motor, 4' LT X 7' FB X 15' High Machine Dimensions, No. BR17 **SEE PHOTO**

25 Ton X 60" Stroke U.S. Broach & Machine Co. Model VMP-25TX60 Vertical Broach; S/N 1513, Allen Bradley Panelview 550 Controls, 75 HP Motor, 4' LR X 7' FB X 15' High Machine Dimensions, No. BR18 **SEE PHOTO**

Ohio Broach & Machine Co. Model XDRVS-7558X Vertical Broach; S/N 74663, 75 HP Main Hydraulic w/ (5) Auxiliary Hydraulic Motors, Allen Bradley Panelview Controls, w/ Add on Horizontal Drill Station, No. BR20 **SEE PHOTO**

Lipe Model 12LL AMC Bar Feeder; S/N 14468

ROBOTIC INDUCTION HARDENING SYSTEM

Tocco Model Contours Induction Hardening Power Supply; S/N 22-2025-34, A=700 KW, B=1,375 KW, Keyboard, PLC Controls, & Beckhoff Model C3620 Touch Screen Control

Tocco Induction II Model 100-3/TNT T-06H Power Supply; S/N 95-45-88-12, 800 KW, w/ Allen Bradley Model Panel View Controls

Motoman Model YR-K10-C000 CNC Part Manipulator Robot; S/N RH9022-9032-1, 10 Kg Payload (New 1995)

Other Misc. Components Consisting of; Conveyorized Feed & Exit System, Custom Designed w/ 3-Station Induction Hardening Fixture, Quench Systems, Piping, & Pumps, (2) Custom Designed Tempering Stations, Each w/ Robotic Type Parts Load/Unload, Conveyorized Feed-Through, Torit Model Dryflo Mist Collector, Entry and Exit Parts Washers

INDUCTION HARDENING MACHINES

207 KVA Tocco Model SEC805 Induction Hardening Machine; S/N 93-4395-16, Three-Phase, 480-Volts, 80 KW Power Output, 200 Gallon Sump (HT-28) **SEE PHOTO**

114 KVA Thermonic Model C5000 Induction Hardening Machine; S/N 7743, Three-Phase, 460-Volts, 50 KW Power Output, Set up with Conveyorized Feed Through, Heating Fixtures, Tanks, Pumps, Torit Collector (HT-26 & HT-13)



25 Ton X 60" Stroke U.S. Broach & Machine Co. Model VMP-25TX60 Vertical Broach

IMPORTANT AUCTION NOTICES

LARGE POSSIBILITY OF ADDITIONS
See Website One Week Prior to Auction for Auction Catalog

LARGE SCRAP OPPORTUNITY
Some of this Machinery will be Sold for Scrap at the Auction



Robotic Load Induction Hardening System w/ Tocco Power Supplies



Acme Fab Three-Stage Rotary Barrel Parts Washer



**NEW
2001**

Jen Fab Automated Vertical Agitation Parts Washer w/ Ultrasonics

64 KVA Cycle-Dyne Model C-300 Induction Hardening Machine; S/N F-40138, Three-Phase, 440-Volts, 30 KW Power Output, 30 Gallon Sump, Approx. 16" Vibratory Bowl Parts Feeder, Parts Fixture, Coolant Recycling & Filtration Unit, Mayfran International Parts Conveyor & Control Panel (HT-31)

SEE PHOTO

IEH Induction Hardening Machine; S/N N/A (HT-20)

PARTS FINISHING MACHINE

Richwood Industries Controlled Velocity Model C.V.2000SA Barrel Type Rotary Parts Finishing Machine; S/N 9101110, Four-Barrels at 8" Wide X 21" Long X 10" Deep, Sumitomo Smac-Pac Controls, No. DB-13

SEE PHOTO

PARTS WASHERS - ALL TYPES

Jen Fab Automated Vertical Agitation Parts Washer w/ Ultrasonics; S/N 10517, Alkaline Prewash, Ultrasonic Wash, Ultrasonic Rinse all at 130 - 170 Degrees, (6) Hot Air Convection Dry Stations at 130 - 220 Degrees, Basket Processing Unit, 16" Wide X 12" Long X 4" High Max. Basket Size, Basket Lift System, (3) 1,000 Watt Piezoelectric Inmersible Transducers (New 2001)

SEE PHOTO

Lewis Corp. Model CR Series Two-Stage Ultrasonic Washer; S/N CR2216-4167, w/ Coalesson Add on Unit, Pneumatic Door Lift, Each Clean Chamber at 15" X 20" X 15" Deep, Stainless Steel Construction, No. AW-06F

Acme Fab Three-Stage Rotary Barrel Parts Washer; S/N 92325, Habo-Wash-Rust Inhibit Temperature Controls, w/ 12" Wide Titan Steel Belt Incline Feed Conveyor; S/N 93520, Overall Length - 15', 125 Gallon Tank Capacity, No. AW-04

SEE PHOTO

Acme Fab Three-Stage Steel Belt Type Parts Washer; S/N 92322, 24" Wide Belt X 6" High Window, Habo-Wash-Rust Inhibit Temperature Controls, Overall Length - 18', w/ 4" Wide Parts Conveyance System, Inspection Station, No. AW-03

SEE PHOTO

Acme Fab Single Stage Steel Belt Type Parts Washer; S/N 95315, 6" Wide Belt X 2" High Window, Bodine Adjustable Speed Controls, Shop Built Wire Brush Deburring Machine, 4" Wide Part Conveyance System, No. WD-16

Vibra Model VF-4 Vibratory Finisher; S/N 4466, 42" Diameter, Parts Separating, Currently In Storage

Sweco Model FMD-10 Vibratory Finisher; S/N 10FM-671-16, 40" Diameter, Currently In Storage

MISC. EQUIPMENT / SHOP EQUIPMENT

(2) Encyclon Cyclonic Model 296-150 Fluid Filter Systems; S/Ns 10449 & N/A, No's FL-09 & FL-005

Fastik Type GAC-360/S7 Chiller Unit; S/N 2260-4200

Berg Model BSG-36 Sand & Gravel Filter; S/N W00689D-LA1-0401, Never Put In Service

20 HP Ingersoll Rand Model SSR-EP20 Rotary Screw Air Compressor; S/N JX0621U99256

(2) 1,000 LB Air Technical Electric / Hydraulic Scissor Lift Tables; 48" X 48" Platforms

(2) Milford Model 57 Dual Head Riveters

20" Nikon Model V-20A Optical Comparator

(3) Torit MC1000 Dust Collectors

5 HP Sanborn Black-Max Single Stage Vertical Tank Air Compressor

12" Everett Abrasive Wheel Cut-Off Saw w/ Enclosure

17" Delta Type 17-900 Single Spindle Floor Drill

Inspection Tools Consisting of; (50) Federal Dimension Air Inspection Gauges, (3) Federal Surfanalyzer Gauges, (25) Edmunds Tower Air Gauges, Other Items to be Added on Sale Day

Approx. (75) Heavy Duty Steel Shop Carts of Various Sizes & Capacities

LIFT TRUCK

4,600 LB Yale Model ERC050 Sit Down Electric Lift Truck; S/N A908N06863E, 3-Stage Mast, 189" Lift Height, Fingertip Controls, 36-Volt Charger

OFFICE FURNITURE

Modern Office Furniture Consisting of; D.P. Desks, Steel & Wood Bookcases, Credenzas, Steel Shelving, Chairs, Tables Letter Files, Lateral Files, & Other Related Items



207 KVA Tocco Model SEC805 Induction Hardening Machine



Richwood Industries Controlled Velocity Model C.V.2000SA Barrel Type Rotary Parts Finishing Machine



64 KVA Cycle-Dyne Model C-300 Induction Hardening Machine



207 KVA Tocco Model SEC805 Induction Hardening Machine



Bank View Sweco and Vibra Vibratory Finishing Bowls



(2) AE Bishop Model Mark XI Slot Generating Machines



(2) Thielenhaus Microfinish Corp. Model SF125-H8A Eight-Station Super Finish Honing Machines



(3) Engis Model VBM3030 Ten-Station Vertical Bore Finishing Machines

SPECIALTY DRILLING MACHINES

(5) Advanced Kiffer Systems Specialty Drilling Machines; S/N's 3862 (D37), 3130 (D33), 382 (D35), 3129 (D32) & 2399-1000-01 (D30), Allen Bradley Panelview Controls, Dual Station Machines w/ Each Station Containing (8) to (12) Horizontal & Incline Drilling Stations, Infeed & Outfeed Conveyors **SEE PHOTO**

Universal Automatic Corp. Model AM7RH Specialty Drilling & Milling Machine; S/N 3488, Rotary Base Machine, (5) Horizontal & (2) Upward Incline Drilling Stations, Dual Pallet Machine, 24" Rotary Infeed Bowl, 8" Wide Magnetized Exit Conveyor, No. D50

(2) Universal Automatic Corp. Model AM-6 Specialty Drilling & Milling Machines; S/N's 3362 (D42) & 3447 (D46), (6) Horizontal Drilling Fixtures on Rotary Based Machine, 24" Infeed Bowls, 8" Wide Magnetized Exit Conveyor, Allen Bradley Panelview 900 Controls **SEE PHOTO**

Govro Nelson Horizontal Specialty Drilling Machine (Out of Service)

DIAMOND HONE / BORE FINISHING MACHINES

(3) Engis Model VBM3030 Ten-Station Vertical Bore Finishing Machines; S/N's 1020-686 (DS1), 1013-785 (DS08) & N/A (DS06) **SEE PHOTO**

Accu-Cut Model Accumatic 5SI Six-Station Vertical Bore Finishing / Honing Machine; S/N 104396, Allen Bradley 550 Control, No. DS12

Engis Model 1015-986 Bore Finishing Machine; S/N 54001, Currently In Storage

SUPER FINISH STONE HONING MACHINES

(2) Thielenhaus Microfinish Corp. Model SF125-H8A Eight-Station Super Finish Honing Machines; S/N's 51007078 & 51007059, Allen Bradley Panelview 1000 Controls, CFRS Fluid Recovery System, Parts Loading Station, Stone Pressure, Counter Pressure, Bearing Cap Pressure Gauges, No.'s CG-20F & CG-19F **SEE PHOTO**

SLOT GENERATING MACHINES

(2) AE Bishop Model Mark XI Slot Generating Machines; S/N's 1113 (SL09) & 1112 (SL08), Push Button Controls, Infeed Parts Conveyors, 8" Wide Eriez Magnetized Exit Conveyors **SEE PHOTO**

TOOLROOM MACHINERY

Dahil Model DL-GH2200 Vertical / Horizontal Milling Machine; S/N 81487, 11" X 51" T-Slotted Power Table, Spindle Speeds from 80 to 3,800 RPM, Quality 800 DRO (TR-35) **SEE PHOTO**

10" X 16" Cincinnati Model R-55 Universal Cylindrical Grinder; S/N 27091, Double Swivel Wheel Head, 60 to 500 RPM (TR-21) **SEE PHOTO**

Giddings & Lewis Model Winslomatic HR Automatic Drill Grinder; S/N 947-00065-83 (TR-20) **SEE PHOTO**

Mohawk Model 48 Drill Sharpener; S/N PT395 (Mohawk 25)

VIDMAR CABINETS

(25) Vidmar Storage Cabinets **SEE PHOTO**

BRIDGE AND JIB CRANES

3 Ton X 26' Approx. Span X 50' Approx. Long Progressive Free-Standing Overhead Bridge Crane; S/N N/A, 3 Ton Budget Electric Chain Hoist w/ Pendant, 15' Approx. Height **SEE PHOTO**

2 Ton X 9' Approx. Span X 21' Approx. Long Free-Standing Overhead Crane; S/N N/A, 2 Ton Budget Electric Chain Hoist w/ Pendant, 12' High

1/2 Ton X 8' Arm Gorbil Free-Standing Jib Crane; 1/2 Ton Budget Electric Chain Hoist w/ Pendant

1/4 Ton X 8' Arm Handling Systems Free-Standing Jib Crane; 500 LB CM Shopstar Electric Chain Hoist

500 LB X 8' Arm Loderail Free-Standing Jib Crane



10" X 16" Cincinnati Model R-55 Universal Cylindrical Grinder



Dahil Model DL-GH2200 Vertical / Horizontal Milling Machine



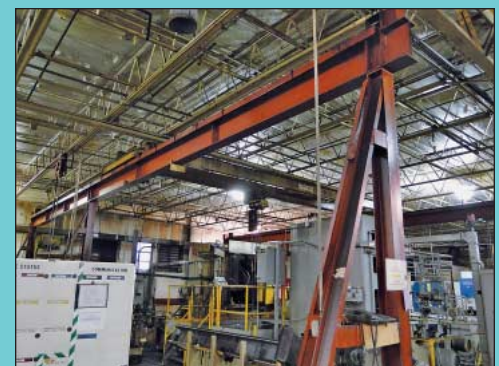
Giddings & Lewis Model Winslomatic HR Automatic Drill Grinder



(5) Advanced Kiffer Systems Specialty Drilling Machines



(2) Universal Automatic Corp. Model AM-6 Specialty Drilling & Milling Machines



3 Ton X 26' Approx. Span X 50' Approx. Long Progressive Free-Standing Overhead Bridge Crane



(25) Vidmar Storage Cabinets

PUBLIC AUCTION

HIGH PRODUCTION CNC, AUTOMATIC MACHINING AND SUPPORT EQUIPMENT FROM AN AUTOMOTIVE SUPPLIER

SURPLUS TO THE NEEDS OF



8229 Tyler Blvd. – Mentor, Ohio 44060
30 Miles Northeast of Downtown Cleveland

SALE DATE:
Wednesday, Jan. 11th
STARTING AT 9:00 AM

INSPECTION:
Tuesday, January 10th
10:00 AM to 4:00 PM



Cincinnati Industrial Auctioneers Inc.

2020 DUNLAP ST., CINCINNATI, OHIO 45214
PHONE (513) 241-9701 / FAX (513) 241-6760
WEBSITE: cia-auction.com



Rismatic Rotary Transfer Machine



(2) 1-5/8" Acme RB-8's



(3) Fellows CNC Gear Shapers (2004)

FIRST CLASS MAIL!

PRE-SORT
FIRST CLASS
U.S. POSTAGE
PAID
CINCINNATI, OHIO
PERMIT NO. 3593

Important Mail

TO BE DIRECTED TO THE ATTENTION
OF EXECUTIVE PERSONNEL



WEDNESDAY, JANUARY 11TH

PUBLIC AUCTION

SURPLUS TO THE NEEDS OF



8229 Tyler Blvd. – Mentor, Ohio 44060
30 Miles Northeast of Downtown Cleveland

IMPORTANT NOTICE:

Although information has been obtained from sources deemed reliable, the auctioneer makes no warranty or guarantee, expressed or implied, as to the accuracy of the information herein contained. It is for this reason that buyers should avail themselves of the opportunity to make inspection prior to the sale. This brochure is intended to provide general information of the equipment being offered and is subject to errors, omissions, additions or deletions. Please check with the Auctioneer's Office for a final listing. Items offered may or may not necessarily be sold as described and/or photographed in this brochure.

MAIL BIDS ACCEPTED WITH A 25% DEPOSIT

DIRECTIONS

From I-90 Approx. 30 Miles East of Downtown Cleveland, Exit at No. 193 Rt. 306. Proceed North on Rt. 306 Approx. 1-1/2 Miles to Tyler Blvd. Proceed East on Tyler Approx. 2 Miles to Sale Site on Left. Use the East Portion of Parking Lot, Watch for Auction Parking and Sale Entrance Signs.

AUCTIONEERS

Cincinnati Industrial Auctioneers, Inc. – License No. 63-1983-10439

Jeffrey L. Luggen – License No. 57-1983-33789

Jerome A. Luggen – License No. 52-1983-33799

Jeffrey M. Luggen – License No. 2010-0000-26

Joseph M. Luggen – License No. 2010-0000-19

John F. Rome – License No. 57-2000-84249



TERMS OF SALE

All equipment described herein will be sold "as is", "where is" to the highest bidder or bidders for cash in accordance with our regular terms and conditions of sale. Unless other satisfactory arrangements are made, a **25% deposit** in cash, certified or cashier's check payable to Cincinnati Industrial Auctioneers, Inc., is **required on all purchases**. Firm and personal checks accepted only if accompanied by a letter from your bank guaranteeing your funds. All sales are subject to state and/or local taxes unless a signed exemption form is presented at the time of purchase. **All balances are due at the conclusion of the sale.** No merchandise may be removed while the sale is in progress. **All bidders must comply with our Standard Terms of Sale**, copies of which will be available at the sale site or can be obtained from our website.

15% ONSITE BUYER'S PREMIUM
18% ONLINE BUYER'S PREMIUM

SALE UNDER THE MANAGEMENT OF



Cincinnati Industrial Auctioneers Inc.

2020 DUNLAP ST., CINCINNATI, OHIO 45214 PHONE (513) 241-9701 / FAX (513) 241-6760

WEBSITE: cia-auction.com for printable brochures, catalog, terms and proxy-bidding

SALE DATE
Wednesday,
January 11th
9:00 am