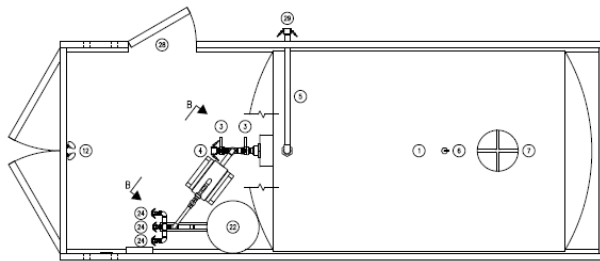


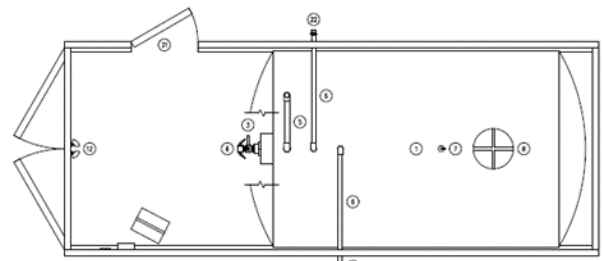
Portable Water and Septic Units



- Skid-mounted, portable units for easy site set-up and tear-down
- Each unit is equipped with 3,500 gallon tanks for efficient storage
- Fully insulated & enclosed containers with heavy duty 220v heaters for extreme temperatures
- Available with fully winterized hoses and lifting stations to avoid costly maintenance calls
- Septic lift stations are composite construction with rubber gasket sealed lids. NO ODOR!
- Capable of supporting up to 4 housing units for maximum operational efficiency
- Septic unit can offer additional toilet facility for outside use and convenience



8' W x 19' 11" L x 8' 5" H
Water floor plan



8' W x 19' 11" L x 8' 5" H
Septic Floor Plan (without toilet)

Water and Septic Service

- Ally Onsite can supply fresh water and provide wastewater removal service to your rig site.
- Prearranged service schedules ensure DEP compliance at all times.
- NAWT certified vacuum truck technicians
- Heavy duty water & septic trucks
- 3,600 gallon capacity cold spec tanks
- Scheduled service intervals

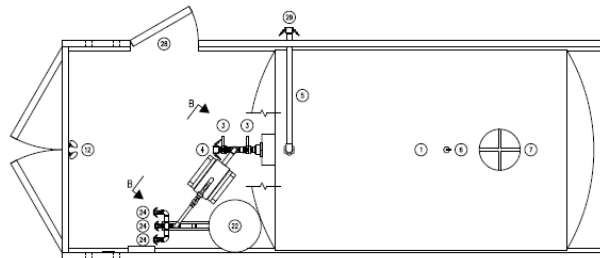


Portable Water and Septic Units

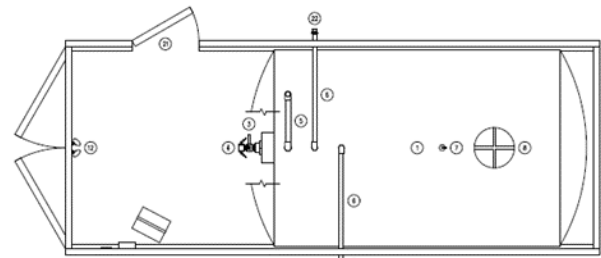


Features

- Skid-mounted, portable units for easy site set-up and tear-down
- Each unit is equipped with 3,500 gallon tanks for efficient storage
- Fully insulated & enclosed containers with heavy duty 220v heaters for extreme temperatures
- Available with fully winterized hoses and lifting stations to avoid costly maintenance calls
- Capable of supporting up to 4 housing units for maximum operational efficiency
- Septic unit can offer additional toilet facility for outside use and convenience



8' W x 19' 11" L x 8' 5" H
Septic Floor Plan (without toilet)



8' W x 19' 11" L x 8' 5" H
Water Floor Plan

Water and Septic Service



- Ally Onsite can supply fresh water and provide wastewater removal service to your site.
- Prearranged service schedules ensure DEP compliance at all times.
- NAWT certified vacuum truck technicians
- Heavy duty water & septic trucks
- 3,600 gallon capacity cold spec tanks
- Scheduled service intervals